

DONUTS RING-ONE
298344



298344-12

FEATURES

Coated neoprene ring best protects thumbs from blistering while riding.

PRODUCTS RELATED



298345
HANDLE COVER MANETA

■ 090

DASH REV COUNTER
FOHDEGIR
298336



298336-12

FEATURES

Universal tachometer with RPM reader, launch control and shift warning functionality

LEDs allow you to read revolutions per minute (RPM) in real time, giving you full control

The Launch Control function ensures the rider gets the perfect start, thanks to LEDs that indicate the ideal moment to start at maximum power and control, depending on one's preferences

The shift warning function uses LEDs to signal the rider the right time to shift gears and release full engine power. The LEDs will flash at the desired rpm

Equipped with a convenient button for adjusting the necessary settings, which can be positioned on the handlebars

Front guard integrated into the aluminum support base, with the protective function from bumps and debris

Water-resistant

Applies to the front of the fender, via an aluminum bracket and screws in the mounting kit

Can be applied to any fender, with direct power supply to the battery. RPM reading is via electrical pulses detectable from the spark plug power cable

Printed logo on tachometer and lasered on bracket

PRODUCT DETAILS

PVC: 29 | 304 stainless steel: 14 | Epoxy Resin: 10 | Aluminium: 9 | ABS: 7 | Organic silicone: 6 | Copper: 5 | Methyl vinyl silicone rubber: 5 | PBT: 4 | Fiberglass: 4 | Others: 2 | PP: 3 | PMMA: 1 | PBS: 1

Made In: China

HANDLE COVER MANETA 298345



298345-12

FEATURES

Hand grip cover kit for transport and "donuts" thumb protection. Maneta is an innovative accessory that, thanks to its neoprene construction, fits all types of handlebars. The neoprene grip cover, prevents the grip from getting dirty during transportation and maintenance work on the motorcycle.

The outer TPR protector, allows the knob to be protected from rubbing during transport. Coated neoprene ring best protects thumbs from blistering while riding. Velcro closure for easy donning
Weight: 100g

PRODUCT DETAILS

40% Neoprene | 25% Nylon | 20% Polyestere | 12% PVC | 3% Others

Made In: China

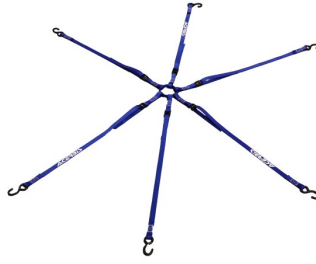
PRODUCTS RELATED



298344
DONUTS RING-ONE

■ 090

TIE DOWN RAGNO
298190



298190-62



298190-12



298190-32

FEATURES

6 arm retaining strap
6 straps with 980mm length / 25mm width and hook
S-hooks in steel with PVC coating for protection against scratches

Maximum load 100kg / 220 Lb

PRODUCT DETAILS

POLYESTER 92,00% | STEEL 8,00%

Made In: Taiwan, Province of China

HURA WATCH 291528



291528-12

FEATURES

Wristwatch
Steel case with a diameter of 43 mm
Steel ferrule
Hardened mineral glass
Steel crown and pushers
Japanese movement, Seiko VD57 chronometer
Dial with green light

Diamond-cut hands
Screw-down steel caseback
3 ATM waterproof
Adjustable strap in genuine full grain calfskin
Steel buckle
Battery operated

PRODUCT DETAILS

STEEL 60% | GLASS 5% | GENUINE LEATHER 5% | METAL 20%

Made In: China

**U-RET RADIATOR
LOUVERS**
292938



292938-12

FEATURES

Mesh for universal radiator louvers
It allows to limit the infiltration of mud, sand and debris into the radiator that cause the engine to overheat

Quick and easy assembly
Easy cleaning

PRODUCT DETAILS

POLYVINYL CHLORIDE 60% | POLYAMIDE 20% | POLYESTER 17% | OTHERS 3%

Made In: China

X-EXHAUST 292939



292939-



292939-12

FEATURES

Easy to mount with adjustable metal clamps
Resistant to high temperatures (Warning: the plastic must stay at least 8mm away from the exhaust)

Avoid contact of trousers and boots with hot exhaust
Specific to OEM standard pipes

APPLICATIONS

BETA RR 350 4T 2013 2014 2015 2016 2017 2018 2019 2020 2021 2022 2023 2024 | BETA RR 390 4T 2015 2016 2017 2018 2019 2020 2021 2022 2023 2024 | BETA RR 430 4T 2015 2016 2017 2018 2019 2020 2021 2022 2023 2024 | BETA RR 480 4T 2015 2016 2017 2018 2019 2020 2021 2022 2023 2024 | BETA RR X-PRO 350 4T 2025 | BETA RR X-PRO 390 4T 2025 | BETA RR X-PRO 430 4T 2025 | BETA RR X-PRO 480 4T 2025 | GAS GAS EC 250 F 2021 2022 2023 2024 2025 | GAS GAS EC 350 F 2021 2022 2023 2024 2025 | GAS GAS EC 450 F 2024 2025 | GAS GAS EC 500 F 2024 2025 | GAS GAS EX 250 F 2021 2022 2023 2024 2025 | GAS GAS EX 350 F 2021 2022 2023 2024 2025 | GAS GAS EX 450 F 2021 2022 2023 2024 2025 | GAS GAS MC 250 F 2021 2022 2023 2024 2025 | GAS GAS MC 350 F 2022 2023 2024 2025 | GAS GAS MC 450 F 2021 2022 2023 2024 2025 | HONDA CRF 250 R 2022 2023 2024 2025 | HONDA CRF 250 R-WE 2025 | HONDA CRF 250 RX 2022 2023 2024 2025 | HONDA CRF 250 RX ENDURO 2022 2023 2024 2025 | HONDA CRF 250 RX ENDURO SPECIAL 2022 2023 2024 2025 | HONDA CRF 300 RX 2022 2023 2024 | HONDA CRF 300 RX ENDURO 2022 2023 2024 2025 | HONDA CRF 300 RX ENDURO SPECIAL 2022 2023 2024 2025 | HONDA CRF 450 R 2020 2021 2022 2023 2024 2025 | HONDA CRF 450 R-WE 2025 | HONDA CRF 450 RX 2020 | HUSQVARNA FC 250 2014 2015 2016 2017 2018 2019 2020 2021 2022 2023 2024 2025 | HUSQVARNA FC 350 2014 2015 2016 2017 2018 2019 2020 2021 2022 2023 2024 2025 | HUSQVARNA FE 250 2014 2015 2016 2017 2018 2019 2020 2021 2022 2023 2024 2025 | HUSQVARNA FE 350 2014 2015 2016 2017 2018 2019 2020 2021 2022 2023 2024 2025 | HUSQVARNA FE 350 PRO 2024 | HUSQVARNA FE 350 S 2022 2023 2024 2025 | HUSQVARNA FE 350 W 2024 | HUSQVARNA FE 450 2025 | HUSQVARNA FE 501 2025 | HUSQVARNA FE 501 S 2022 2023 2024 2025 | HUSQVARNA FE 501 W 2024 | HUSQVARNA FX 350 2020 2021 2022 2025 | HUSQVARNA FX 450 2020 2021 2022 2025 | HUSQVARNA TX 300 2025 | KAWASAKI KX 450 2024 2025 | KAWASAKI KX 450 X 2024 2025 | KTM EXC-F 250 2012 2013 2014 2015 2016 2017 2018 2019 2020 2021 2022 2023 2024 2025 | KTM EXC-F 350 2012 2013 2014 2015 2016 2017 2018 2019 2020 2021 2022 2023 2024 2025 | KTM EXC-F 450 2012 2013 2014 2015 2016 2017 2018 2019 2020 2021 2022 2023 2024 2025 | KTM EXC-F 500 2012 2013 2014 2015 2016 2017 2018 2019 2020 2021 2022 2023 2024 2025 | KTM SX-F 250 2012 2013 2014 2015 2016 2017 2018 2019 2020 2021 2022 2023 2024 2025 | KTM SX-F 350 2012 2013 2014 2015 2016 2017 2018 2019 2020 2021 2022 2023 2024 2025 | KTM SX-F 450 2012 2013 2014 2015 2016 2017 2018 2019 2020 2021 2022 2023 2024 2025 | KTM XC-W 150 TPI 2019 2020 2021 2022 2023 | KTM XCF-W 450 2024 2025 | KTM XW-F 350 2024 2025 | KTM XW-F 500 2024 2025 | SHERCO 250 SEF-R 2012 2013 2014 2015 2016 2017 2018 2019 2020 2021 2022 2023 | SHERCO 300 SEF-R 2012 2013 2014 2015 2016 2017 2018 2019 2020 2021 2022 2023 | SHERCO 450 SEF-R 2012 2013 2014 2015 2016 2017 2018 2019 2020 2021 2022 2023 | SHERCO 500 SEF FACTORY 2020 2021 2022 2023

**SILENCER END CAP
16,39MM
207144**



207144-12

PRODUCTS RELATED



278041
ELEVATOR BIKE STAND

■ 090

TA-TIRE BELT 273214



273214-12

FEATURES

Ultra-strong structure
Semi-rigid handle made of non-slip material
Made for extreme enduro use
Easily installed via ring coupling without having to remove forks

Can be installed on all fork diameters

PRODUCT DETAILS

NYLON 29,00% | ZINC ALLOY 22,00% | RUBBER 10,00% | PVC 15,00% | OTHERS 5,00% | POLYPROPYLENE 19,00%

Made In: China



X-TIRE COVER 273215



273215-12

FEATURES

USE: Wheel covers are used to avoid getting the bike's tyres dirty in the presence of mud and/or sand (for example after washing the bike), or before a competition at the starting grid, to avoid clogging the tyre treads, allowing the rider to have a fast start with the best possible grip and riding control.

APPLICATION: The kit consists of two Tyre covers: one for 21" front wheel and one for 18" and 19" rear wheel.

FITTING: The tyre covers can be quickly and intuitively fitted thanks to the Velcro fastener.

MAINTENANCE AND WASHING: by washing machine at 30 ° or high pressure washer (cold water)

MATERIALS: Polyester and PVC fabric resistant to wear and tear.

PRODUCT DETAILS

COMPOSITION: | 50% Polyester | 50% PVC

Made In: China

SILENCER PROTECTOR 267679



267679-22



267679-62



267679-12



267679-32

FEATURES

Silencer protection against bumps
Circumference 200/400 mm
Locking system through micrometric closing bands

Heat resistant

PRODUCT DETAILS

100% Silicone

Made In: Italy

PRODUCTS RELATED



272649
FULL PLASTIC KIT FOR KTM

- 011.016
- 030
- 031
- 070
- 072
- 083
- 090
- 092
- 132
- 204
- 207
- 232
- 243
- 297
- 313
- 319
- 553
- 553.020
- 553.021
- 553.022



207267
MX UNIKO VENTED
HANDGUARDS

- 011.016
- 030
- 040
- 090
- 110
- 111
- 112
- 325

**BREMBO PUMP
COVERS**
244954



244954-22



244954-



244954-42



244954-



244954-55



244954-12

FEATURES

- Polypropylene pump cover
- Protection for Brembo clutches and brake master cylinders manufactured after 2014
- Shock resistant and reduces wear of the plates
- O-Ring fixing
- INSTALLATION DOESN'T REQUIRE LOOSENING ANY SCREWS

PROTECTOR
204321



204321-12

TENAY BELT 278052



278052-



278052-12

FEATURES

Length : 170 cm x 25mm
Maximum tensile load: 80kg
Set of two belts equipped with non-slip safety metal buckle

PRODUCTS RELATED



286186
X-WATER 40L HORIZONTAL
BAG

■ 319



286187
X-WATER 30L VERTICAL BAG

■ 319

**UNIVERSAL FILTER
COVER**
267623



267623-12

FEATURES

The filter cover is an essential accessory for safeguarding the engine. Weight: 70g
The filter cover fits all filter cages to allow deep washing of the motorcycle without letting water into the engine.

PRODUCT DETAILS

100% Rubber

Made In: Italy



BIG TIE DOWNS 35MM

267634



267634-62



267634-12



267634-

FEATURES

Total lenght 205 cm
Buckle lenght 185 cm

2 pz.

PRODUCT DETAILS

FABRIC: | Polyester 100%BUCKLE | Zinc alloy 93% | Steel 7%

Made In: China

X-BAR PAD
292941



292941-



292941-315



292941-

FEATURES

Cover in highly resistant TPR
Created in foam material to absorb the blow in case of an impact

Extremely lightweight
Velcro fastening
Permanent wash-proof graphics

PRODUCTS RELATED



207267
MX UNIKO VENTED
HANDGUARDS

- | | |
|---------|-----|
| 011.016 | 030 |
| 040 | 090 |
| 110 | 111 |
| 112 | 325 |

FOOT PEG COVER
210696



210696-22



210696-12

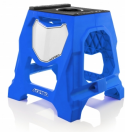
711 BIKE STAND



711 BIKE STAND
272648



272648-22



272648-62



272648-55



272648-



272648-12



272648-32



272648-72

FEATURES

Structure composed of a techno polymer combined with two high-resistance steel tubes
 Upper mat with anti-slip design developed for the best stability, even in wet conditions
 Removable mount to stabilise the bike according to the form of the frame
 Central hole for the insert of 'Speedy Fuel' and '10L' tanks

Maximum static load: 160 kg - 352,74 Lbs
 The very wide feet and the knurled surface prevent any swaying, ensuring that the stand is very stable on sandy or muddy ground
 Integrated customisable number plate
 Easy handhold

ELEVATOR BIKE STAND 278041



278041-12

FEATURES

Steel constructed Lift-Stand with an additional damper to slow the period of descent when lowering.

Rubber upper deck with adjustable height to adapt to most full-size off-road dirt-bikes as well as youth/mini bikes.

Rotating upper deck to allow movement of the bike during maintenance.

Locking mechanism to secure the stand and prevent accidental lowering of the bike.

Maximum height of the bike: adjustable from 33 to 46 cm / 13" to 18".

Minimum height of the bike: adjustable from 23,5 to 36 cm / 9 1/4" to 14" for minicross

Maximum load: 130 Kg / 286lb.

PRODUCTS RELATED



FUNNEL TANK

- | | |
|-----|-----|
| 010 | 030 |
| 040 | 070 |
| 110 | 131 |



207144
SILENCER END CAP 16,39MM

- 090



LIQUID BREAKERS - 01

MOTO ACCESSORIES / RACE MATERIALS / ACCESSORIES
ELEVATOR BIKE STAND



LIQUID BREAKERS - 03



USA DUCT TAPE 9 MT

■ 090

END CAP DISPLAY
210697



210697-02

FEATURES

2/4 STROKES
pcs: 36 pcs. set (18 yellow / 18 black)

2/4 STROKE END CAP
209715



209715-12

FEATURES

2/4 STROKES

HANDLEBAR END CAP
214167



214167-12

**REAR VIEW MIRROR -
LEFT**
204357



204357-12

**REAR VIEW MIRROR -
RIGHT**
204358



204358-12