

**DONUTS RING-ONE**  
298344



298344-12

**FEATURES**

Coated neoprene ring best protects thumbs from blistering while riding.

**PRODUCTS RELATED**



298345  
HANDLE COVER MANETA

■ 090

DASH REV COUNTER  
FOHDEGIR  
298336



298336-12

## FEATURES

Universal tachometer with RPM reader, launch control and shift warning functionality

LEDs allow you to read revolutions per minute (RPM) in real time, giving you full control

The Launch Control function ensures the rider gets the perfect start, thanks to LEDs that indicate the ideal moment to start at maximum power and control, depending on one's preferences

The shift warning function uses LEDs to signal the rider the right time to shift gears and release full engine power. The LEDs will flash at the desired rpm

Equipped with a convenient button for adjusting the necessary settings, which can be positioned on the handlebars

Front guard integrated into the aluminum support base, with the protective function from bumps and debris

Water-resistant

Applies to the front of the fender, via an aluminum bracket and screws in the mounting kit

Can be applied to any fender, with direct power supply to the battery. RPM reading is via electrical pulses detectable from the spark plug power cable

Printed logo on tachometer and lasered on bracket

## PRODUCT DETAILS

PVC: 29 | 304 stainless steel: 14 | Epoxy Resin: 10 | Aluminium: 9 | ABS: 7 | Organic silicone: 6 | Copper: 5 | Methyl vinyl silicone rubber: 5 | PBT: 4 | Fiberglass: 4 | Others: 2 | PP: 3 | PMMA: 1 | PBS: 1

Made In: China

## HANDLE COVER MANETA 298345



298345-12

## FEATURES

Hand grip cover kit for transport and "donuts" thumb protection. Maneta is an innovative accessory that, thanks to its neoprene construction, fits all types of handlebars. The neoprene grip cover, prevents the grip from getting dirty during transportation and maintenance work on the motorcycle.

The outer TPR protector, allows the knob to be protected from rubbing during transport. Coated neoprene ring best protects thumbs from blistering while riding. Velcro closure for easy donning  
Weight: 100g

## PRODUCT DETAILS

40% Neoprene | 25% Nylon | 20% Polyestere | 12% PVC | 3% Others

Made In: China

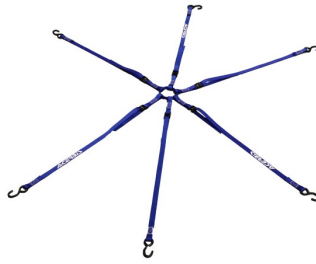
## PRODUCTS RELATED



298344  
DONUTS RING-ONE

■ 090

**TIE DOWN RAGNO**  
298190



298190-62



298190-12



298190-32

**FEATURES**

6 arm retaining strap  
6 straps with 980mm length / 25mm width and hook  
S-hooks in steel with PVC coating for protection against scratches

Maximum load 100kg / 220 Lb

**PRODUCT DETAILS**

POLYESTER 92,00% | STEEL 8,00%

Made In: Taiwan, Province of China

## HURA WATCH 291528



291528-12

## FEATURES

Wristwatch  
Steel case with a diameter of 43 mm  
Steel ferrule  
Hardened mineral glass  
Steel crown and pushers  
Japanese movement, Seiko VD57 chronometer  
Dial with green light

Diamond-cut hands  
Screw-down steel caseback  
3 ATM waterproof  
Adjustable strap in genuine full grain calfskin  
Steel buckle  
Battery operated

## PRODUCT DETAILS

STEEL 60% | GLASS 5% | GENUINE LEATHER 5% | METAL 20%

Made In: China

**U-RET RADIATOR  
LOUVERS**  
292938



292938-12

**FEATURES**

Mesh for universal radiator louvers  
It allows to limit the infiltration of mud, sand and debris into the radiator that cause the engine to overheat

Quick and easy assembly  
Easy cleaning

**PRODUCT DETAILS**

POLYVINYL CHLORIDE 60% | POLYAMIDE 20% | POLYESTER 17% | OTHERS 3%

Made In: China

**X-EXHAUST**  
292939



292939-



292939-12

**FEATURES**

Easy to mount with adjustable metal clamps  
Resistant to high temperatures (Warning: the plastic must stay at least 8mm away from the exhaust)

Avoid contact of trousers and boots with hot exhaust  
Specific to OEM standard pipes

**APPLICATIONS**

BETA RR 350 4T 2013 2014 2015 2016 2017 2018 2019 2020 2021 2022 2023 2024 | BETA RR 390 4T 2015 2016 2017 2018 2019 2020 2021 2022 2023 2024 | BETA RR 430 4T 2015 2016 2017 2018 2019 2020 2021 2022 2023 2024 | BETA RR 480 4T 2015 2016 2017 2018 2019 2020 2021 2022 2023 2024 | BETA RR X-PRO 350 4T 2025 | BETA RR X-PRO 390 4T 2025 | BETA RR X-PRO 430 4T 2025 | BETA RR X-PRO 480 4T 2025 | GAS GAS EC 250 F 2021 2022 2023 2024 2025 | GAS GAS EC 350 F 2021 2022 2023 2024 2025 | GAS GAS EC 450 F 2024 2025 | GAS GAS EC 500 F 2024 2025 | GAS GAS EX 250 F 2021 2022 2023 2024 2025 | GAS GAS EX 350 F 2021 2022 2023 2024 2025 | GAS GAS EX 450 F 2021 2022 2023 2024 2025 | GAS GAS MC 250 F 2021 2022 2023 2024 2025 | GAS GAS MC 350 F 2022 2023 2024 2025 | GAS GAS MC 450 F 2021 2022 2023 2024 2025 | HONDA CRF 250 R 2022 2023 2024 2025 | HONDA CRF 250 R-WE 2025 | HONDA CRF 250 RX 2022 2023 2024 2025 | HONDA CRF 250 RX ENDURO 2022 2023 2024 2025 | HONDA CRF 250 RX ENDURO SPECIAL 2022 2023 2024 2025 | HONDA CRF 300 RX 2022 2023 2024 | HONDA CRF 300 RX ENDURO 2022 2023 2024 2025 | HONDA CRF 300 RX ENDURO SPECIAL 2022 2023 2024 2025 | HONDA CRF 450 R 2020 2021 2022 2023 2024 2025 | HONDA CRF 450 R-WE 2025 | HONDA CRF 450 RX 2020 | HUSQVARNA FC 250 2014 2015 2016 2017 2018 2019 2020 2021 2022 2023 2024 2025 | HUSQVARNA FC 350 2014 2015 2016 2017 2018 2019 2020 2021 2022 2023 2024 2025 | HUSQVARNA FE 250 2014 2015 2016 2017 2018 2019 2020 2021 2022 2023 2024 2025 | HUSQVARNA FE 350 PRO 2024 | HUSQVARNA FE 350 S 2022 2023 2024 2025 | HUSQVARNA FE 350 W 2024 | HUSQVARNA FE 450 2025 | HUSQVARNA FE 501 2025 | HUSQVARNA FE 501 S 2022 2023 2024 2025 | HUSQVARNA FE 501 W 2024 | HUSQVARNA FX 350 2020 2021 2022 2025 | HUSQVARNA FX 450 2020 2021 2022 2025 | HUSQVARNA TX 300 2025 | KAWASAKI KX 450 2024 2025 | KAWASAKI KX 450 X 2024 2025 | KTM EXC-F 250 2012 2013 2014 2015 2016 2017 2018 2019 2020 2021 2022 2023 2024 2025 | KTM EXC-F 350 2012 2013 2014 2015 2016 2017 2018 2019 2020 2021 2022 2023 2024 2025 | KTM EXC-F 450 2012 2013 2014 2015 2016 2017 2018 2019 2020 2021 2022 2023 2024 2025 | KTM EXC-F 500 2012 2013 2014 2015 2016 2017 2018 2019 2020 2021 2022 2023 2024 2025 | KTM SX-F 250 2012 2013 2014 2015 2016 2017 2018 2019 2020 2021 2022 2023 2024 2025 | KTM SX-F 350 2012 2013 2014 2015 2016 2017 2018 2019 2020 2021 2022 2023 2024 2025 | KTM SX-F 450 2012 2013 2014 2015 2016 2017 2018 2019 2020 2021 2022 2023 2024 2025 | KTM XC-W 150 TPI 2019 2020 2021 2022 2023 | KTM XCF-W 450 2024 2025 | KTM XW-F 350 2024 2025 | KTM XW-F 500 2024 2025 | SHERCO 250 SEF-R 2012 2013 2014 2015 2016 2017 2018 2019 2020 2021 2022 2023 | SHERCO 300 SEF-R 2012 2013 2014 2015 2016 2017 2018 2019 2020 2021 2022 2023 | SHERCO 450 SEF-R 2012 2013 2014 2015 2016 2017 2018 2019 2020 2021 2022 2023 | SHERCO 500 SEF FACTORY 2020 2021 2022 2023





**SILENCER END CAP  
16-39MM  
207144**



207144-12

**PRODUCTS RELATED**



278041  
ELEVATOR BIKE STAND

■ 090

## TA-TIRE BELT 273214



273214-12

## FEATURES

Ultra-strong structure  
Semi-rigid handle made of non-slip material  
Made for extreme enduro use  
Easily installed via ring coupling without having to remove forks

Can be installed on all fork diameters

## PRODUCT DETAILS

NYLON 29,00% | ZINC ALLOY 22,00% | RUBBER 10,00% | PVC 15,00% | OTHERS 5,00% | POLYPROPYLENE 19,00%

Made In: China



## X-TIRE COVER 273215



273215-12

## FEATURES

**USE:** Wheel covers are used to avoid getting the bike's tyres dirty in the presence of mud and/or sand (for example after washing the bike), or before a competition at the starting grid, to avoid clogging the tyre treads, allowing the rider to have a fast start with the best possible grip and riding control.

**APPLICATION:** The kit consists of two Tyre covers: one for 21" front wheel and one for 18" and 19" rear wheel.

**FITTING:** The tyre covers can be quickly and intuitively fitted thanks to the Velcro fastener.

**MAINTENANCE AND WASHING:** by washing machine at 30 ° or high pressure washer (cold water)

**MATERIALS:** Polyester and PVC fabric resistant to wear and tear.

## PRODUCT DETAILS

COMPOSITION: | 50% Polyester | 50% PVC

Made In: China

## SILENCER PROTECTOR

267679



267679-22



267679-62



267679-12



267679-32

## FEATURES

Silencer protection against bumps  
Circumference 200/400 mm  
Locking system through micrometric closing bands

Heat resistant

## PRODUCT DETAILS

100% Silicone

Made In: Italy

PRODUCTS RELATED



272649  
FULL PLASTIC KIT FOR KTM

- 011.016
- 030
- 031
- 070
- 072
- 083
- 090
- 092
- 132
- 204
- 207
- 232
- 243
- 297
- 313
- 319
- 553
- 553.020
- 553.021
- 553.022



207267  
MX UNIKO VENTED  
HANDGUARDS

- 011.016
- 030
- 040
- 090
- 110
- 111
- 112
- 325

**BREMBO PUMP  
COVERS**  
244954



244954-22



244954-



244954-42



244954-



244954-55



244954-12

**FEATURES**

- Polypropylene pump cover
- Protection for Brembo clutches and brake master cylinders manufactured after 2014
- Shock resistant and reduces wear of the plates
- O-Ring fixing
- INSTALLATION DOESN'T REQUIRE LOOSENING ANY SCREWS

**PROTECTOR**  
204321



204321-12

## TENAY BELT 278052



278052-



278052-12

## FEATURES

Length : 170 cm x 25mm  
Maximum tensile load: 80kg  
Set of two belts equipped with non-slip safety metal buckle

## PRODUCTS RELATED



286186  
X-WATER 40L HORIZONTAL  
BAG

■ 319



286187  
X-WATER 30L VERTICAL BAG

■ 319



**UNIVERSAL FILTER  
COVER**  
267623



267623-12

**FEATURES**

The filter cover is an essential accessory for safeguarding the engine. Weight: 70g  
The filter cover fits all filter cages to allow deep washing of the motorcycle without letting water into the engine.

**PRODUCT DETAILS**

100% Rubber

Made In: Italy



**BIG TIE DOWNS 35MM**  
267634



267634-62



267634-12



267634-

**FEATURES**

Total lenght 205 cm  
Buckle lenght 185 cm

2 pz.

**PRODUCT DETAILS**

FABRIC: | Polyester 100%BUCKLE | Zinc alloy 93% | Steel 7%

Made In: China

X-BAR PAD  
292941



292941-



292941-315



292941-

FEATURES

Cover in highly resistant TPR  
Created in foam material to absorb the blow in case of an impact

Extremely lightweight  
Velcro fastening  
Permanent wash-proof graphics

PRODUCTS RELATED



207267  
MX UNIKO VENTED  
HANDGUARDS

- |         |     |
|---------|-----|
| 011.016 | 030 |
| 040     | 090 |
| 110     | 111 |
| 112     | 325 |

**FOOT PEG COVER**  
210696



210696-22



210696-12

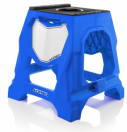
**711 BIKE STAND**



**711 BIKE STAND**  
**272648**



272648-22



272648-62



272648-55



272648-



272648-12



272648-32



272648-72

**FEATURES**

Structure composed of a techno polymer combined with two high-resistance steel tubes  
 Upper mat with anti-slip design developed for the best stability, even in wet conditions  
 Removable mount to stabilise the bike according to the form of the frame  
 Central hole for the insert of 'Speedy Fuel' and '10L' tanks

Maximum static load: 160 kg - 352,74 Lbs  
 The very wide feet and the knurled surface prevent any swaying, ensuring that the stand is very stable on sandy or muddy ground  
 Integrated customisable number plate  
 Easy handhold

## ELEVATOR BIKE STAND 278041



278041-12

### FEATURES

Steel constructed Lift-Stand with an additional damper to slow the period of descent when lowering.

Rubber upper deck with adjustable height to adapt to most full-size off-road dirt-bikes as well as youth/mini bikes.

Rotating upper deck to allow movement of the bike during maintenance.

Locking mechanism to secure the stand and prevent accidental lowering of the bike.

Maximum height of the bike: adjustable from 33 to 46 cm / 13" to 18".

Minimum height of the bike: adjustable from 23,5 to 36 cm / 9 1/4" to 14" for minicross

Maximum load: 130 Kg / 286lb.

### PRODUCTS RELATED



FUNNEL TANK

- |     |     |
|-----|-----|
| 010 | 030 |
| 040 | 070 |
| 110 | 131 |



207144  
SILENCER END CAP 16-39MM

- 090



LIQUID BREAKERS - 01

**MOTO ACCESSORIES / RACE MATERIALS / ACCESSORIES**  
**ELEVATOR BIKE STAND**



LIQUID BREAKERS - 03



USA DUCT TAPE 9 MT

■ 090

**END CAP DISPLAY**  
210697



210697-02

**FEATURES**

2/4 STROKES  
pcs: 36 pcs. set (18 yellow / 18 black)



**2/4 STROKE END CAP**  
209715



209715-12

**FEATURES**

2/4 STROKES

**HANDLEBAR END CAP**  
214167



214167-12

**FEATURES**

5 pcs

**REAR VIEW MIRROR -  
LEFT**  
204357



**REAR VIEW MIRROR -  
RIGHT**  
204358



204358-12