

**RASPA MUD SCRAPER
+ BRUSCIA CHAIN
BRUSH**
298639



298639-

FEATURES

Raspa:
Scraper that ensures easy removal of mud from the bike.
Handle with motorcycle rubber grip for greater ergonomics.
Its shape is designed to allow easy access to curved parts, such as the fender

Bruscia:
Brush for cleaning chains and transmission assembly.
Removes sand, mud and dirt.
Suitable for wet and dry use.

PRODUCTS RELATED



RASPA MUD SCRAPER

■ 318



BRUSCIA CHAIN BRUSH

■ 318

DONUTS RING-ONE
298344



298344-12

FEATURES

Coated neoprene ring best protects thumbs from blistering while riding.

PRODUCTS RELATED



298345
HANDLE COVER MANETA

■ 090

DASH REV COUNTER
FOHDEGIR
298336



298336-12

FEATURES

Universal tachometer with RPM reader, launch control and shift warning functionality

LEDs allow you to read revolutions per minute (RPM) in real time, giving you full control

The Launch Control function ensures the rider gets the perfect start, thanks to LEDs that indicate the ideal moment to start at maximum power and control, depending on one's preferences

The shift warning function uses LEDs to signal the rider the right time to shift gears and release full engine power. The LEDs will flash at the desired rpm

Equipped with a convenient button for adjusting the necessary settings, which can be positioned on the handlebars

Front guard integrated into the aluminum support base, with the protective function from bumps and debris

Water-resistant

Applies to the front of the fender, via an aluminum bracket and screws in the mounting kit

Can be applied to any fender, with direct power supply to the battery. RPM reading is via electrical pulses detectable from the spark plug power cable

Printed logo on tachometer and lasered on bracket

PRODUCT DETAILS

PVC: 29 | 304 stainless steel: 14 | Epoxy Resin: 10 | Aluminium: 9 | ABS: 7 | Organic silicone: 6 | Copper: 5 | Methyl vinyl silicone rubber: 5 | PBT: 4 | Fiberglass: 4 | Others: 2 | PP: 3 | PMMA: 1 | PBS: 1

Made In: China

HANDLE COVER MANETA 298345



298345-12

FEATURES

Hand grip cover kit for transport and "donuts" thumb protection. Maneta is an innovative accessory that, thanks to its neoprene construction, fits all types of handlebars. The neoprene grip cover, prevents the grip from getting dirty during transportation and maintenance work on the motorcycle.

The outer TPR protector, allows the knob to be protected from rubbing during transport. Coated neoprene ring best protects thumbs from blistering while riding. Velcro closure for easy donning
Weight: 100g

PRODUCT DETAILS

40% Neoprene | 25% Nylon | 20% Polyestere | 12% PVC | 3% Others

Made In: China

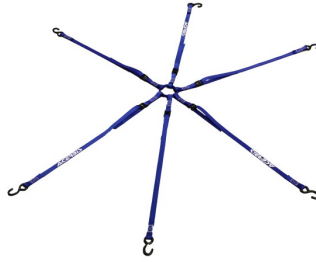
PRODUCTS RELATED



298344
DONUTS RING-ONE

■ 090

TIE DOWN RAGNO
298190



298190-62



298190-12



298190-32

FEATURES

6 arm retaining strap
6 straps with 980mm length / 25mm width and hook
S-hooks in steel with PVC coating for protection against scratches

Maximum load 100kg / 220 Lb

PRODUCT DETAILS

POLYESTER 92,00% | STEEL 8,00%

Made In: Taiwan, Province of China

**U-RET RADIATOR
LOUVERS**
292938



292938-12

FEATURES

Mesh for universal radiator louvers
It allows to limit the infiltration of mud, sand and debris into the radiator that cause the engine to overheat

Quick and easy assembly
Easy cleaning

PRODUCT DETAILS

POLYVINYL CHLORIDE 60% | POLYAMIDE 20% | POLYESTER 17% | OTHERS 3%

Made In: China

X-EXHAUST
292939



292939-



292939-12

FEATURES

Easy to mount with adjustable metal clamps
Resistant to high temperatures (Warning: the plastic must stay at least 8mm away from the exhaust)

Avoid contact of trousers and boots with hot exhaust
Specific to OEM standard pipes

APPLICATIONS

BETA RR 350 4T 2013 2014 2015 2016 2017 2018 2019 2020 2021 2022 2023 2024 | BETA RR 390 4T 2015 2016 2017 2018 2019 2020 2021 2022 2023 2024 | BETA RR 430 4T 2015 2016 2017 2018 2019 2020 2021 2022 2023 2024 | BETA RR 480 4T 2015 2016 2017 2018 2019 2020 2021 2022 2023 2024 | BETA RR X-PRO 350 4T 2025 | BETA RR X-PRO 390 4T 2025 | BETA RR X-PRO 430 4T 2025 | BETA RR X-PRO 480 4T 2025 | GAS GAS EC 250 F 2021 2022 2023 2024 2025 | GAS GAS EC 350 F 2021 2022 2023 2024 2025 | GAS GAS EC 450 F 2024 2025 | GAS GAS EC 500 F 2024 2025 | GAS GAS EX 250 F 2021 2022 2023 2024 2025 | GAS GAS EX 350 F 2021 2022 2023 2024 2025 | GAS GAS EX 450 F 2021 2022 2023 2024 2025 | GAS GAS MC 250 F 2021 2022 2023 2024 2025 | GAS GAS MC 350 F 2022 2023 2024 2025 | GAS GAS MC 450 F 2021 2022 2023 2024 2025 | HONDA CRF 250 R 2022 2023 2024 2025 | HONDA CRF 250 R-WE 2025 | HONDA CRF 250 RX 2022 2023 2024 2025 | HONDA CRF 250 RX ENDURO 2022 2023 2024 2025 | HONDA CRF 250 RX ENDURO SPECIAL 2022 2023 2024 2025 | HONDA CRF 300 RX 2022 2023 2024 | HONDA CRF 300 RX ENDURO 2022 2023 2024 2025 | HONDA CRF 300 RX ENDURO SPECIAL 2022 2023 2024 2025 | HONDA CRF 450 R 2020 2021 2022 2023 2024 2025 | HONDA CRF 450 R-WE 2025 | HONDA CRF 450 RX 2020 | HUSQVARNA FC 250 2014 2015 2016 2017 2018 2019 2020 2021 2022 2023 2024 2025 | HUSQVARNA FC 350 2014 2015 2016 2017 2018 2019 2020 2021 2022 2023 2024 2025 | HUSQVARNA FE 250 2014 2015 2016 2017 2018 2019 2020 2021 2022 2023 2024 2025 | HUSQVARNA FE 350 2014 2015 2016 2017 2018 2019 2020 2021 2022 2023 2024 2025 | HUSQVARNA FE 350 PRO 2024 2025 | HUSQVARNA FE 350 S 2022 2023 2024 2025 | HUSQVARNA FE 350 W 2024 | HUSQVARNA FE 450 2025 | HUSQVARNA FE 501 2025 | HUSQVARNA FE 501 S 2022 2023 2024 2025 | HUSQVARNA FE 501 W 2024 | HUSQVARNA FX 350 2020 2021 2022 2025 | HUSQVARNA FX 450 2020 2021 2022 2025 | HUSQVARNA TX 300 2025 | KAWASAKI KX 450 2024 2025 | KAWASAKI KX 450 X 2024 2025 | KTM EXC-F 250 2012 2013 2014 2015 2016 2017 2018 2019 2020 2021 2022 2023 2024 2025 | KTM EXC-F 350 2012 2013 2014 2015 2016 2017 2018 2019 2020 2021 2022 2023 2024 2025 | KTM EXC-F 450 2012 2013 2014 2015 2016 2017 2018 2019 2020 2021 2022 2023 2024 2025 | KTM EXC-F 500 2012 2013 2014 2015 2016 2017 2018 2019 2020 2021 2022 2023 2024 2025 | KTM SX-F 250 2012 2013 2014 2015 2016 2017 2018 2019 2020 2021 2022 2023 2024 2025 | KTM SX-F 350 2012 2013 2014 2015 2016 2017 2018 2019 2020 2021 2022 2023 2024 2025 | KTM SX-F 450 2012 2013 2014 2015 2016 2017 2018 2019 2020 2021 2022 2023 2024 2025 | KTM XC-W 150 TPI 2019 2020 2021 2022 2023 | KTM XCF-W 450 2024 2025 | KTM XW-F 350 2024 2025 | KTM XW-F 500 2024 2025 | SHERCO 250 SEF-R 2012 2013 2014 2015 2016 2017 2018 2019 2020 2021 2022 2023 | SHERCO 300 SEF-R 2012 2013 2014 2015 2016 2017 2018 2019 2020 2021 2022 2023 | SHERCO 450 SEF-R 2012 2013 2014 2015 2016 2017 2018 2019 2020 2021 2022 2023

**SILENCER END CAP
16-39MM
207144**



207144-12

PRODUCTS RELATED



278041
ELEVATOR BIKE STAND

■ 090

TA-TIRE BELT 273214



273214-12

FEATURES

Ultra-strong structure
Semi-rigid handle made of non-slip material
Made for extreme enduro use
Easily installed via ring coupling without having to remove forks

Can be installed on all fork diameters

PRODUCT DETAILS

NYLON 29,00% | ZINC ALLOY 22,00% | RUBBER 10,00% | PVC 15,00% | OTHERS 5,00% | POLYPROPYLENE 19,00%

Made In: China



X-TIRE COVER 273215



273215-12

FEATURES

USE: Wheel covers are used to avoid getting the bike's tyres dirty in the presence of mud and/or sand (for example after washing the bike), or before a competition at the starting grid, to avoid clogging the tyre treads, allowing the rider to have a fast start with the best possible grip and riding control.

APPLICATION: The kit consists of two Tyre covers: one for 21" front wheel and one for 18" and 19" rear wheel.

FITTING: The tyre covers can be quickly and intuitively fitted thanks to the Velcro fastener.

MAINTENANCE AND WASHING: by washing machine at 30 ° or high pressure washer (cold water)

MATERIALS: Polyester and PVC fabric resistant to wear and tear.

PRODUCT DETAILS

COMPOSITION: | 50% Polyester | 50% PVC

Made In: China

SILENCER PROTECTOR
267679



267679-22



267679-62



267679-12



267679-32

FEATURES

Silencer protection against bumps
Circumference 200/400 mm
Locking system through micrometric closing bands

Heat resistant

PRODUCT DETAILS

100% Silicone

Made In: Italy

PRODUCTS RELATED



272649
FULL PLASTIC KIT FOR KTM

- 011.016
- 030
- 031
- 070
- 072
- 083
- 090
- 092
- 132
- 204
- 207
- 232
- 243
- 297
- 313
- 319
- 553
- 553.020
- 553.021
- 553.022



207267
MX UNIKO VENTED
HANDGUARDS

- 011.016
- 030
- 040
- 090
- 110
- 112
- 325

**PUMP COVERS FOR
BREMBO BRAKES**
244954



244954-22



244954-



244954-42



244954-



244954-55



244954-12

FEATURES

- Polypropylene pump cover
- Protection for Brembo clutches and brake master cylinders manufactured after 2014
- Shock resistant and reduces wear of the plates
- O-Ring fixing
- INSTALLATION DOESN'T REQUIRE LOOSENING ANY SCREWS

PROTECTOR
204321



204321-12

TENAY BELT 278052



278052-



278052-12

FEATURES

Length : 170 cm x 25mm
Maximum tensile load: 80kg
Set of two belts equipped with non-slip safety metal buckle

PRODUCTS RELATED



286186
X-WATER 40L HORIZONTAL
BAG

■ 319



286187
X-WATER 30L VERTICAL BAG

■ 319

**UNIVERSAL FILTER
COVER**
267623



267623-12

FEATURES

The filter cover is an essential accessory for safeguarding the engine.

Weight: 70g

The filter cover fits all filter cages to allow deep washing of the motorcycle without letting water into the engine.

PRODUCT DETAILS

100% Rubber

Made In: Italy



BIG TIE DOWNS 35MM
267634



267634-62



267634-12



267634-

FEATURES

Total lenght 205 cm
Buckle lenght 185 cm

2 pz.

PRODUCT DETAILS

FABRIC: | Polyester 100%BUCKLE | Zinc alloy 93% | Steel 7%

Made In: China

X-BAR PAD
292941



292941-



292941-315



292941-

FEATURES

Cover in highly resistant TPR
Created in foam material to absorb the blow in case of an impact

Extremely lightweight
Velcro fastening
Permanent wash-proof graphics

PRODUCTS RELATED



207267
MX UNIKO VENTED
HANDGUARDS

- 011.016 ■ 030
- 040 ■ 090
- 110 ■ 112
- 325

FOOT PEG COVER
210696



210696-22



210696-12

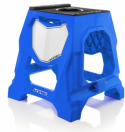
711 BIKE STAND



711 BIKE STAND
272648



272648-22



272648-62



272648-55



272648-



272648-12



272648-32



272648-72

FEATURES

Structure composed of a techno polymer combined with two high-resistance steel tubes
 Upper mat with anti-slip design developed for the best stability, even in wet conditions
 Removable mount to stabilise the bike according to the form of the frame
 Central hole for the insert of 'Speedy Fuel' and '10L' tanks

Maximum static load: 160 kg - 352,74 Lbs
 The very wide feet and the knurled surface prevent any swaying, ensuring that the stand is very stable on sandy or muddy ground
 Integrated customisable number plate
 Easy handhold

ELEVATOR BIKE STAND 278041



278041-12

FEATURES

Steel constructed Lift-Stand with an additional damper to slow the period of descent when lowering.

Rubber upper deck with adjustable height to adapt to most full-size off-road dirt-bikes as well as youth/mini bikes.

Rotating upper deck to allow movement of the bike during maintenance.

Locking mechanism to secure the stand and prevent accidental lowering of the bike.

Maximum height of the bike: adjustable from 33 to 46 cm / 13" to 18".

Minimum height of the bike: adjustable from 23,5 to 36 cm / 9 1/4" to 14" for minicross

Maximum load: 130 Kg / 286lb.

PRODUCTS RELATED



207144
SILENCER END CAP 16-39MM

■ 090



FUNNEL TANK

■ 010 □ 030

■ 040 ■ 070

■ 110 ■ 131



MEASURING JUG 500ml

MOTO ACCESSORIES / RACE MATERIALS / ACCESSORIES
ELEVATOR BIKE STAND

ACERBI



MEASURING CYLINDER 500ml



USA DUCT TAPE 9 MT

■ 090

END CAP DISPLAY
210697



210697-02

FEATURES

2/4 STROKES
pcs: 36 pcs. set (18 yellow / 18 black)

**2/4 STROKE -
SILENCER END CAP**
209715



209715-12

FEATURES

2/4 STROKES

HANDLEBAR END CAP
214167



214167-12

FEATURES

5 pcs

**REAR VIEW MIRROR -
LEFT**
204357



**REAR VIEW MIRROR -
RIGHT**
204358



204358-12

MOTO CARPET
298338



298338-315

FEATURES

Rubberized bike mat, perfect for your dirtbike to be perched upon
Ideal for maintenance of the vehicle
Absorbent upper part is coupled with a layer of rubberized, non-slip
and waterproof material
Resistant to oil, grease, water and dirt stains the mat prevents
contamination of the ground underneath

For indoor and outdoor use
Easy to wash
Mandatory use in several motocross tracks
Size: 100x200 cm

MOTO CARPET
298337



298337-315

FEATURES

Rubberized bike mat, perfect for your dirtbike to be perched upon
Ideal for maintenance of the vehicle
Absorbent upper part is coupled with a layer of rubberized, non-slip and waterproof material
Resistant to oil, grease, water and dirt stains the mat prevents contamination of the ground underneath

For indoor and outdoor use
Easy to wash
Mandatory use in several motocross tracks
Size: 80x180 cm

BIKE STAND PAKET
298066



298066-



298066-



298066-



298066-



298066-



298066-

FEATURES

Folding stand for off-road and supermotard motorbikes.
Load capacity for motorbikes up to 130 kg (=286.60 Lb) and a maximum capacity of 250 kg (=551.15 Lb) including rider.
The structure consisting of 6 plastic sections, joined by the two upper plates, provides the motorbike with excellent stability and offers a comfortable grip handle when the stand is closed.

There is a non-slip and scratch-resistant surface on the top.
Integrated customisable number plate
Perfectly stackable stand that only takes up a few centimetres when closed
Embossed logo
Weight 3300 g
Dimensions:
Height when closed: 610 mm;
Height when open: 425 mm;
Width when closed: 50 mm;
Top surface: 300x320 mm;
Base: 420x450 mm

PRODUCT DETAILS

90% Polypropylene | 8% EPDM | 2% Others

Made In: China

**MOTO ACCESSORIES / RACE MATERIALS / RACE MATERIALS
BIKE STAND PAKET**



PRODUCTS RELATED



207267
MX UNIKO VENTED
HANDGUARDS

- 011.016 □ 030
- 040 ■ 090
- 110 ■ 112
- 325

MOTO CARPET P-KOULIT 297501



297501-

FEATURES

Rubberized bike mat, perfect for your dirtbike to be perched upon
Ideal for maintenance of the vehicle
Absorbent upper part is coupled with a layer of rubberized, non-slip and waterproof material
Resistant to oil, grease, water and dirt stains the mat prevents contamination of the ground underneath

For indoor and outdoor use
Easy to wash
Mandatory use in several motocross tracks
Size: 80x180 cm

PRODUCT DETAILS

100% Polyester

Made In: China

MOTO KAMP TENT

298189



298189-

FEATURES

Camping tent with automatic opening
Closed curtain size: 73x6 cm
Weight: 2,1 Kg/ 4,6LB
Equipped with pegs for better ground fixing

Room: 210x145 cm
Maximum working height: 100 cm
Resistant to wind
Small internal storage pocket: 20x25 cm
Capacity: 2 seats

PRODUCT DETAILS

100% Polyester

Made In: China

**ROOF TENT FOR
0024886.
292942**



292942-55

PRODUCTS RELATED



294490
PROFILE ACERBIS TENT 3X3

■ 060



298133
SIDE PANELS TENT FOR
0024886.

■ 060

SIDE PANELS TENT FOR 0024886. 298133



298133-55

FEATURES

3 sides

PRODUCTS RELATED



294490
PROFILE ACERBIS TENT 3X3

■ 060



292942
ROOF TENT FOR 0024886.

■ 060

MOTO KAMP CHAIR
298134



298134-12

FEATURES

Foldable chair and easy to carry
Made of durable polyester material
2 covered armrests for maximum comfort

Recommended maximum load of 100 kg
Closed chair size: 48x80x16 cm
Open chair size: 48x80x59 cm

PRODUCT DETAILS

Steel 90,00% | Polyester 10,00%

Made In: China

**PROFILE ACERBIS
TENT 3X3
294490**



294490-55

PRODUCT DETAILS

POLYESTER 60% | ALLUMINIUM 30% | OTHERS 10%

Made In: China

PRODUCTS RELATED



292942
ROOF TENT FOR 0024886.

■ 060



298133
SIDE PANELS TENT FOR
0024886.

■ 060

**ACERBIS RACE
UMBRELLA**
214246



214246-315



214246-32



214246-42



214246-62



214246-72



214246-22



214246-55

FEATURES

Height: 98cm
1/2 Width: 75cm

PRODUCT DETAILS

POLYESTER

Made In: China



TRACK MARKER
56PCS
232082



232082-42



232082-



232082-



232082-



232082-



232082-



232082-22



232082-62



232082-55

FEATURES

56 PCS
Height: 76,5 cm

RACE TAPE
ACERBIS.COM
279158



279158-

FEATURES

Lenght 250 m

**RACE TAPE ACERBIS
IN ACTION MT.250**
279159

DO NOT CROSS **ACERBIS** IN ACTION DO NOT CROSS



ACERBIS 279159-

FEATURES

Length 250 m



ATLANTIS BIB
278051



278051-22



278051-



278051-55



278051-72



278051-

FEATURES

Perforated tear-resistant fabric
New design with logo print

5 pcs. set

PRODUCT DETAILS

100% POLYESTER

Made In: Pakistan

SIZES

S | L | XXL

**INFLATABLE ARCH
110V
237888**



237888-55

FEATURES

110V

ACERBIS BANNER
220593



ACERBIS 220593-

FEATURES

1 Logo

**ACERBIS BANNERS
ROLLS
204241**



ACERBIS 204241-

FEATURES

9 logos

00SET BOOTS 208208



208208-55

FEATURES

From size 40 to size 47
EN ISO 20345:2011 certified
Water, mud, oil and grease protection
Maximum protection against crushing of the toes thanks to the steel cap and maximum protection against penetration

Outsole with grip

PRODUCT DETAILS

PVC 95% | OTHERS 5 %

Made In: China

SIZES

T.40 | T.41 | T.42 | T.43 | T.44 | T.45 | T.46 | T.47



ACERBIS FLAG
214242



214242-



TRACK MARKER
205326



205326-55

FEATURES

Height: 76,5 cm

RACE TAPE
204447



204447-

FEATURES

Lenght 500m

MOTO CARPET
217038



217038-

FEATURES

Rubberized bike mat, perfect for your dirtbike to be perched upon
Ideal for maintenance of the vehicle
Absorbent upper part is coupled with a layer of rubberized, non-slip
and waterproof material
Resistant to oil, grease, water and dirt stains the mat prevents
contamination of the ground underneath

For indoor and outdoor use
Easy to wash
Mandatory use in several motocross tracks
Size: 100x200 cm

MOTORBIKE COVER
214430



214430-55

KEY RINGS
298346



298346-



298346-



298346-



298346-

FEATURES

10 pieces

PRODUCT DETAILS

78% PVC | 12% Iron

Made In: China

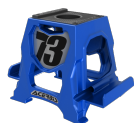
PHONE STAND
279157



279157-32



279157-22



279157-62



279157-12

**FRONT NUMBER
PLATES RIDER
AUTOGRAPH
220548**



220548-22



220548-



220548-42



220548-



220548-



220548-12



220548-



220548-72



220548-



KIT DECAL LOGO
ACERBIS
242117



242117-

**SUPERMOTO FRONT
FENDER**
204039



204039-



204039-42



204039-



204039-



204039-12



204039-



204039-

**SUPERMOTO
EVOLUTION FRONT
FENDER**
207268



207268-12

NOST FRONT FENDER
204037



204037-42



204037-12

PRODUCTS RELATED



263305
ELBA

030

110



204076
NOST REAR FENDER

030

090

NOST REAR FENDER
204076



204076-42



204076-12

PRODUCTS RELATED



204037
NOST FRONT FENDER

030

090

SIZES

BAJA REAR FENDER
204053



204053-42

PRODUCTS RELATED



263305
ELBA

030

110