

DASH REV COUNTER  
FOHDEGIR  
298336



298336-12

FEATURES

Universal tachometer with RPM reader, launch control and shift warning functionality LEDs allow you to read revolutions per minute (RPM) in real time, giving you full control The Launch Control function ensures the rider gets the perfect start, thanks to LEDs that indicate the ideal moment to start at maximum power and control, depending on one's preferences The shift warning function uses LEDs to signal the rider the right time to shift gears and release full engine power. the LEDs will flash at the desired rpm	Equipped with a convenient button for adjusting the necessary settings, which can be positioned on the handlebars Front guard integrated into the aluminum support base, with the protective function from bumps and debris Water-resistant Applies to the front of the fender, via an aluminum bracket and screws in the mounting kit Can be applied to any fender, with direct power supply to the battery. RPM reading is via electrical pulses detectable from the spark plug power cable Printed logo on tachometer and lasered on bracket
--	--

PRODUCT DETAILS

PVC: 29 | 304 stainless steel: 14 | Epoxy Resin: 10 | Aluminium: 9 | ABS: 7 | Organic silicone: 6 | Copper: 5 | Methyl vinyl silicone rubber: 5 | PBT: 4 | Fiberglass: 4 | Others: 2 | PP: 3 | PMMA: 1 | PBS: 1

Made In: China

## HANDLE COVER MANETA 298345



298345-12

### FEATURES

Hand grip cover kit for transport and "donuts" thumb protection. Maneta is an innovative accessory that, thanks to its neoprene construction, fits all types of handlebars. The neoprene grip cover, prevents the grip from getting dirty during transportation and maintenance work on the motorcycle.

The outer TPR protector, allows the knob to be protected from rubbing during transport. Coated neoprene ring best protects thumbs from blistering while riding. Velcro closure for easy donning  
Weight: 100g

### PRODUCT DETAILS

40% Neoprene | 25% Nylon | 20% Polyestere | 12% PVC | 3% Others

Made In: China

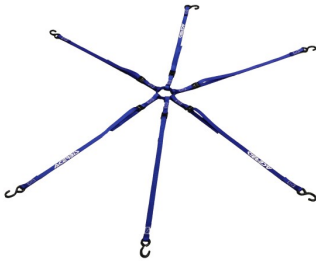
### PRODUCTS RELATED



DONUTS RING-ONE

■ 090

TIE DOWN RAGNO  
298190



298190-62



298190-12



298190-32

FEATURES

- 6 arm retaining strap
- 6 straps with 980mm length / 25mm width and hook
- S-hooks in steel with PVC coating for protection against scratches

Maximum load 100kg / 220 Lb

PRODUCT DETAILS

POLYESTER 92,00% | STEEL 8,00%

Made In: Taiwan, Province of China

HURA WATCH  
291528



291528-12

FEATURES

Wristwatch	Diamond-cut hands
Steel case with a diameter of 43 mm	Screw-down steel caseback
Steel ferrule	3 ATM waterproof
Hardened mineral glass	Adjustable strap in genuine full grain calfskin
Steel crown and pushers	Steel buckle
Japanese movement, Seiko VD57 chronometer	Battery operated
Dial with green light	

PRODUCT DETAILS

STEEL 60% | GLASS 5% | GENUINE LEATHER 5% | METAL 20%

Made In: China



U-RET RADIATOR  
LOUVERS  
292938



292938-12

FEATURES

Mesh for universal radiator louvers It allows to limit the infiltration of mud, sand and debris into the radiator that cause the engine to overheat	Quick and easy assembly Easy cleaning
--	--

PRODUCT DETAILS

POLYVINYL CHLORIDE 60% | POLYAMIDE 20% | POLYESTER 17% | OTHERS 3%

Made In: China

X-EXHAUST  
292939



292939-



292939-12

FEATURES

- Easy to mount with adjustable metal clamps

Resistant to high temperatures (Warning: the plastic must stay at least 8mm away from the exhaust)
- Avoid contact of trousers and boots with hot exhaust

Specific to OEM standard pipes

APPLICATIONS

BETA RR 350 4T 2013 2014 2015 2016 2017 2018 2019 2020 2021 2022 2023 2024 | BETA RR 390 4T 2015 2016 2017 2018 2019 2020 2021 2022 2023 2024 | BETA RR 430 4T 2015 2016 2017 2018 2019 2020 2021 2022 2023 2024 | BETA RR 480 4T 2015 2016 2017 2018 2019 2020 2021 2022 2023 2024 | GAS GAS EC 250 F 2021 2022 2023 2024 | GAS GAS EC 350 F 2021 2022 2023 2024 | GAS GAS EC 450 F 2024 | GAS GAS EC 500 F 2024 | GAS GAS EX 250 F 2021 2022 2023 2024 | GAS GAS EX 350 F 2021 2022 2023 2024 | GAS GAS EX 450 F 2021 2022 2023 2024 | GAS GAS MC 250 F 2021 2022 2023 2024 | GAS GAS MC 350 F 2022 2023 2024 | GAS GAS MC 450 F 2021 2022 2023 2024 | HONDA CRF 250 R 2022 2023 2024 | HONDA CRF 250 RX 2022 2023 2024 | HONDA CRF 250 RX ENDURO 2022 2023 2024 | HONDA CRF 250 RX ENDURO SPECIAL 2022 2023 2024 | HONDA CRF 300 RX 2022 2023 2024 | HONDA CRF 300 RX ENDURO 2022 2023 2024 | HONDA CRF 300 RX ENDURO SPECIAL 2022 2023 2024 | HONDA CRF 450 R 2020 2021 2022 2023 2024 | HONDA CRF 450 RX 2020 | HUSQVARNA FC 250 2014 2015 2016 2017 2018 2019 2020 2021 2022 2023 2024 | HUSQVARNA FC 350 2014 2015 2016 2017 2018 2019 2020 2021 2022 2023 2024 | HUSQVARNA FC 450 2014 2015 2016 2017 2018 2019 2020 2021 2022 2023 2024 | HUSQVARNA FE 250 2014 2015 2016 2017 2018 2019 2020 2021 2022 2023 2024 | HUSQVARNA FE 350 2014 2015 2016 2017 2018 2019 2020 2021 2022 2023 2024 | HUSQVARNA FE 350 PRO 2024 | HUSQVARNA FE 350 S 2022 2023 2024 | HUSQVARNA FE 350 W 2024 | HUSQVARNA FE 450 2014 2015 2016 2017 2018 2019 2020 2021 2022 2023 2024 | HUSQVARNA FE 501 2014 2015 2016 2017 2018 2019 2020 2021 2022 2023 2024 | HUSQVARNA FE 501 S 2022 2023 2024 | HUSQVARNA FE 501 W 2024 | HUSQVARNA FX 350 2020 2021 2022 | HUSQVARNA FX 450 2020 2021 2022 | KAWASAKI KX 450 2024 | KAWASAKI KX 450 X 2024 | KTM EXC-F 250 2012 2013 2014 2015 2016 2017 2018 2019 2020 2021 2022 2023 2024 | KTM EXC-F 350 2012 2013 2014 2015 2016 2017 2018 2019 2020 2021 2022 2023 2024 | KTM EXC-F 450 2012 2013 2014 2015 2016 2017 2018 2019 2020 2021 2022 2023 2024 | KTM EXC-F 500 2012 2013 2014 2015 2016 2017 2018 2019 2020 2021 2022 2023 2024 | KTM SX-F 250 2012 2013 2014 2015 2016 2017 2018 2019 2020 2021 2022 2023 2024 | KTM SX-F 350 2012 2013 2014 2015 2016 2017 2018 2019 2020 2021 2022 2023 2024 | KTM SX-F 450 2012 2013 2014 2015 2016 2017 2018 2019 2020 2021 2022 2023 2024 | KTM XC-W 150 TPI 2019 2020 2021 2022 2023 | KTM XCF-W 450 2024 | KTM XW-F 350 2024 | KTM XW-F 500 2024 | SHERCO 250 SEF-R 2012 2013 2014 2015 2016 2017 2018 2019 2020 2021 2022 2023 | SHERCO 300 SEF-R 2012 2013 2014 2015 2016 2017 2018 2019 2020 2021 2022 2023 | SHERCO 450 SEF-R 2012 2013 2014 2015 2016 2017 2018 2019 2020 2021 2022 2023 | SHERCO 500 SEF FACTORY 2020 2021 2022 2023

SIZES

SILENCER END CAP  
16,39MM  
207144



207144-12

PRODUCTS RELATED



278041  
ELEVATOR BIKE STAND

■ 090

TA-TIRE DRE BELT  
292940



292940-12

FEATURES

Ultra resistant Nylon structure	Length adjustable strap (min 18,75 - max 25,75 inches / min 47,63 - max 65,41 cm)
Designed to lift the motorcycle in case of extreme difficulty	Strong and easy to handle
Easy installation to the rear frame using the bushings included in the package	Eyelet hole: 1/2 inch / 1,27 cm

PRODUCT DETAILS

Nylon 32% | Polyester 3% | POM 4% | Steel 45% | Alluminium 13% | Copper 3%

Made In: China

APPLICATIONS

BETA RR 125 2T 2020 2021 2022 2023 2024 | BETA RR 125 2T RACING 2020 2021 2022 2023 2024 | BETA RR 200 2T 2020 2021 2022 2023 2024 | BETA RR 200 2T RACING 2020 2021 2022 2023 2024 | BETA RR 250 2T 2020 2021 2022 2023 2024 | BETA RR 250 2T RACING 2020 2021 2022 2023 2024 | BETA RR 300 2T 2020 2021 2022 2023 2024 | BETA RR 300 2T RACING 2020 2021 2022 2023 2024 | BETA RR 350 4T 2020 2021 2022 2023 2024 | BETA RR 350 4T RACING 2020 2021 2022 2023 2024 | BETA RR 390 4T 2020 2021 2022 2023 2024 | BETA RR 390 4T RACING 2020 2021 2022 2023 2024 | BETA RR 430 4T 2020 2021 2022 2023 2024 | BETA RR 430 4T RACING 2020 2021 2022 2023 2024 | BETA RR 480 4T 2020 2021 2022 2023 2024 | BETA RR 480 4T RACING 2020 2021 2022 2023 2024 | GAS GAS EC 250 2021 2022 2023 | GAS GAS EC 250 F 2021 2022 2023 | GAS GAS EC 300 2021 2022 2023 | GAS GAS EC 350 F 2021 2022 2023 | HUSQVARNA FE 250 2020 2021 2022 2023 | HUSQVARNA FE 350 2020 2021 2022 2023 | HUSQVARNA FE 350 S 2022 2023 | HUSQVARNA FE 450 2020 2021 2022 2023 | HUSQVARNA FE 501 2020 2021 2022 2023 | HUSQVARNA FE 501 S 2022 2023 | HUSQVARNA TE 150I 2020 2021 2022 2023 | HUSQVARNA TE 250I 2020 2021 2022 2023 | HUSQVARNA TE 300I 2020 2021 2022 2023 | KTM EXC 150 TPI 2020 2021 2022 2023 | KTM EXC 250 TPI 2020 2021 2022 2023 | KTM EXC 300 TPI 2020 2021 2022 2023 | KTM EXC-F 250 2020 2021 2022 2023 | KTM EXC-F 350 2020 2021 2022 2023 | KTM EXC-F 450 2020 2021 2022 2023 | KTM EXC-F 500 2020 2021 2022 2023 | KTM SX 125 2023 2024 | KTM SX 250 2023 2024 | KTM SX-F 250 2023 2024 | KTM SX-F 350 2023 2024 | KTM SX-F 450 2023 2024 | KTM XC 125 2023 2024 | KTM XC 250 2023 2024 | KTM XC 300 2023 2024 | KTM XC-F 250 2023 | KTM XC-F 350 2023 2024 | KTM XC-F 450 2023 2024 | KTM XC-W 250 TPI 2020 2021 2022 2023 | KTM XC-W 300 TPI 2020 2021 2022 2023 | KTM XCF-W 350 2020 2021 2022 2023 | KTM XCF-W 450 2023 | KTM XCF-W 500 2020 2021 2022 2023

**MOTO ACCESSORIES / RACE MATERIALS / ACCESSORIES**  
**TA-TIRE DRE BELT**



## TA-TIRE BELT 273214



273214-12

### FEATURES

Ultra-strong structure	Can be installed on all fork diameters
Semi-rigid handle made of non-slip material	
Made for extreme enduro use	
Easily installed via ring coupling without having to remove forks	

### PRODUCT DETAILS

NYLON 29,00% | ZINC ALLOY 22,00% | RUBBER 10,00% | PVC 15,00% | OTHERS 5,00% | POLYPROPYLENE 19,00%

Made In: China



## X-TIRE COVER 273215



273215-12

### FEATURES

<p><b>USE:</b> Wheel covers are used to avoid getting the bike's tyres dirty in the presence of mud and/or sand (for example after washing the bike), or before a competition at the starting grid, to avoid clogging the tyre treads, allowing the rider to have a fast start with the best possible grip and riding control.</p> <p><b>APPLICATION:</b> The kit consists of two Tyre covers: one for 21" front wheel and one for 18" and 19" rear wheel.</p>	<p><b>FITTING:</b> The tyre covers can be quickly and intuitively fitted thanks to the Velcro fastener.</p> <p><b>MAINTENANCE AND WASHING:</b> by washing machine at 30 ° or high pressure washer (cold water)</p> <p><b>MATERIALS:</b> Polyester and PVC fabric resistant to wear and tear.</p>
--	--

### PRODUCT DETAILS

COMPOSITION: | 50% Polyester | 50% PVC

Made In: China



SILENCER PROTECTOR  
267679



267679-22



267679-62



267679-12



267679-32

FEATURES

Silencer protection against bumps	Heat resistant
Circumference 200/400 mm	
Locking system through micrometric closing bands	

PRODUCT DETAILS

100% Silicone

Made In: Italy

PRODUCTS RELATED



272649  
FULL PLASTIC KIT KTM

- |         |         |
|---------|---------|
| 011.016 | 030     |
| 031     | 070     |
| 072     | 083     |
| 090     | 092     |
| 132     | 204     |
| 207     | 232     |
| 243     | 297     |
| 313     | 319     |
| 553     | 553.020 |
| 553.021 | 553.022 |



298046  
ENDURANCE-X HANDGUARDS

- |     |     |
|-----|-----|
| 090 | 209 |
| 237 | 245 |
| 279 | 315 |
| 343 | 349 |
| 377 | 848 |



207267  
MX UNIKO VENTED  
HANDGUARDS

- |     |         |
|-----|---------|
| 011 | 011.016 |
| 030 | 040     |
| 041 | 060     |
| 090 | 110     |
| 111 | 112     |
| 325 |         |

BREMBO PUMP  
COVERS  
244954



244954-22



244954-



244954-42



244954-



244954-55



244954-12

FEATURES

- Polypropylene pump cover
- Protection for Brembo clutches and brake master cylinders manufactured after 2014
- Shock resistant and reduces wear of the plates
- O-Ring fixing
- INSTALLATION DOESN'T REQUIRE LOOSENING ANY SCREWS

SIZES



PROTECTOR  
204321



204321-12

TENAY BELT  
278052



278052-



278052-12

FEATURES

Length : 170 cm x 25mm  
Maximum tensile load: 80kg  
Set of two belts equipped with non-slip safety metal buckle

PRODUCTS RELATED



286186  
X-WATER 40L HORIZONTAL  
BAG

■ 319



286187  
X-WATER 30L VERTICAL BAG

■ 319

UNIVERSAL FILTER  
COVER  
267623



267623-12



BIG TIE DOWNS 35MM  
267634



267634-62



267634-12



267634-

FEATURES

Total lenght 205 cm Buckle lenght 185 cm	2 pz.
---	-------

PRODUCT DETAILS

FABRIC: | Polyester 100%BUCKLE | Zinc alloy 93% | Steel 7%

Made In: China

X-BAR PAD

292941



292941-



292941-315



292941-

FEATURES

Cover in highly resistant TPR  
Created in foam material to absorb the blow in case of an impact

Extremely lightweight  
Velcro fastening  
Permanent wash-proof graphics

PRODUCTS RELATED



298046  
ENDURANCE-X HANDGUARDS

- |     |     |
|-----|-----|
| 090 | 209 |
| 237 | 245 |
| 279 | 315 |
| 343 | 349 |
| 377 | 848 |



207267  
MX UNIKO VENTED  
HANDGUARDS

- |     |         |
|-----|---------|
| 011 | 011.016 |
| 030 | 040     |
| 041 | 060     |
| 090 | 110     |
| 111 | 112     |
| 325 |         |





FOOT PEG COVER  
210696



210696-22



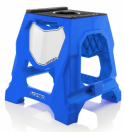
210696-12



711 BIKE STAND  
272648



272648-22



272648-62



272648-55



272648-



272648-12



272648-32



272648-72

FEATURES

Structure composed of a techno polymer combined with two high-resistance steel tubes  
Upper mat with anti-slip design developed for the best stability, even in wet conditions  
Removable mount to stabilise the bike according to the form of the frame  
Central hole for the insert of 'Speedy Fuel' and '10L' tanks

Maximum static load: 160 kg - 352,74 Lbs  
The very wide feet and the knurled surface prevent any swaying, ensuring that the stand is very stable on sandy or muddy ground  
Integrated customisable number plate  
Easy handhold

ELEVATOR BIKE  
STAND  
278041



278041-12

FEATURES

Steel constructed Lift-Stand with an additional damper to slow the period of descent when lowering.  
Rubber upper deck with adjustable height to adapt to most full-size off-road dirt-bikes as well as youth/mini bikes.  
Rotating upper deck to allow movement of the bike during maintenance.

Locking mechanism to secure the stand and prevent accidental lowering of the bike.  
Maximum height of the bike: adjustable from 33 to 46 cm / 13" to 18".  
Minimum height of the bike: adjustable from 23,5 to 36 cm / 9 ¼" to 14" for minicross  
Maximum load: 130 Kg / 286lb.

PRODUCTS RELATED



FUNNEL TANK

- |     |     |
|-----|-----|
| 010 | 030 |
| 040 | 070 |
| 110 | 131 |



207144  
SILENCER END CAP 16,39MM

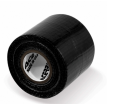
090



LIQUID BREAKERS - 01



LIQUID BREAKERS - 03



USA DUCT TAPE 9 MT

■ 090

## END CAP DISPLAY 210697



210697-02

### FEATURES

2/4 STROKES  
pcs: 36 pcs. set (18 yellow / 18 black)

2/4 STROKE END CAP  
209715



209715-12

FEATURES

2/4 STROKES



**HANDLEBAR END CAP**  
214167



214167-12

REAR VIEW MIRROR -  
LEFT  
204357



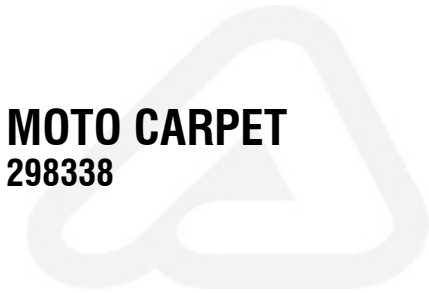
204357-12



REAR VIEW MIRROR -  
RIGHT  
204358



204358-12

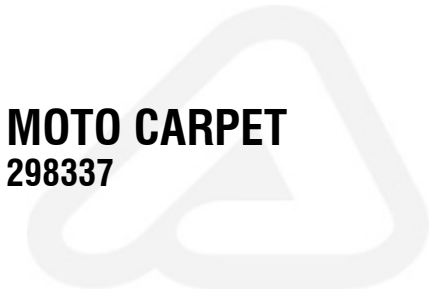


298338-315

FEATURES

Rubberized bike mat, perfect for your dirtbike to be perched upon  
Ideal for maintenance of the vehicle  
Absorbent upper part is coupled with a layer of rubberized, non-slip and waterproof material  
Resistant to oil, grease, water and dirt stains the mat prevents contamination of the ground underneath

For indoor and outdoor use  
Easy to wash  
Mandatory use in several motocross tracks  
Size: 100x200 cm



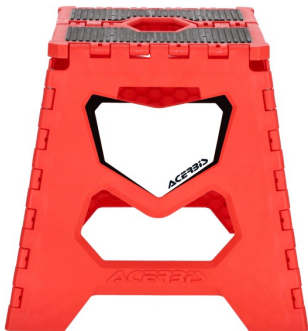
298337-315

FEATURES

Rubberized bike mat, perfect for your dirtbike to be perched upon  
Ideal for maintenance of the vehicle  
Absorbent upper part is coupled with a layer of rubberized, non-slip and waterproof material  
Resistant to oil, grease, water and dirt stains the mat prevents contamination of the ground underneath

For indoor and outdoor use  
Easy to wash  
Mandatory use in several motocross tracks  
Size: 80x180 cm

BIKE STAND PAKET  
298066



298066-



298066-



298066-



298066-



298066-



298066-

FEATURES

Folding stand for off-road and supermotard motorbikes.  
Load capacity for motorbikes up to 130 kg (=286.60 Lb) and a maximum capacity of 250 kg (=551.15 Lb) including rider.  
The structure consisting of 6 plastic sections, joined by the two upper plates, provides the motorbike with excellent stability and offers a comfortable grip handle when the stand is closed.

There is a non-slip and scratch-resistant surface on the top.  
Integrated customisable number plate  
Perfectly stackable stand that only takes up a few centimetres when closed  
Embossed logo  
Weight 3300 g  
Dimensions:  
Height when closed: 610 mm;  
Height when open: 425 mm;  
Width when closed: 50 mm;  
Top surface: 300x320 mm;  
Base: 420x450 mm

PRODUCT DETAILS

90% Polypropylene | 8% EPDM | 2% Others  
Made In: China



PRODUCTS RELATED



298046  
ENDURANCE-X HANDGUARDS

- |     |     |
|-----|-----|
| 090 | 209 |
| 237 | 245 |
| 279 | 315 |
| 343 | 349 |
| 377 | 848 |



207267  
MX UNIKO VENTED  
HANDGUARDS

- |     |         |
|-----|---------|
| 011 | 011.016 |
| 030 | 040     |
| 041 | 060     |
| 090 | 110     |
| 111 | 112     |
| 325 |         |

## MOTO CARPET P-KOULIT 297501



297501-

### FEATURES

Rubberized bike mat, perfect for your dirtbike to be perched upon Ideal for maintenance of the vehicle Absorbent upper part is coupled with a layer of rubberized, non-slip and waterproof material Resistant to oil, grease, water and dirt stains the mat prevents contamination of the ground underneath	For indoor and outdoor use Easy to wash Mandatory use in several motocross tracks Size: 80x180 cm
--	--

### PRODUCT DETAILS

100% Polyester  
Made In: China

## MOTO KAMP TENT

298189



298189-

### FEATURES

Camping tent with automatic opening	Room: 210x145 cm
Closed curtain size: 73x6 cm	Maximum working height: 100 cm
Weight: 2,1 Kg/ 4,6LB	Resistant to wind
Equipped with pegs for better ground fixing	Small internal storage pocket: 20x25 cm
	Capacity: 2 seats

### PRODUCT DETAILS

100% Polyester

Made In: China



ROOF TENT FOR  
0024886.  
292942



292942-55

PRODUCTS RELATED



294490  
PROFILE ACERBIS TENT 3X3

■ 060



298133  
SIDE PANELS TENT FOR  
0024886.

■ 060

SIDE PANELS TENT  
FOR 0024886.  
298133



298133-55

PRODUCTS RELATED



294490  
PROFILE ACERBIS TENT 3X3

060



292942  
ROOF TENT FOR 0024886.

060

MOTO KAMP CHAIR  
298134



298134-12

FEATURES

Foldable chair and easy to carry Made of durable polyester material 2 covered armrests for maximum comfort	Recommended maximum load of 100 kg Closed chair size: 48x80x16 cm Open chair size: 48x80x59 cm
--	--

PRODUCT DETAILS

Steel 90,00% | Polyester 10,00%  
Made In: China

PROFILE ACERBIS  
TENT 3X3  
294490



294490-55

PRODUCT DETAILS

POLYESTER 60% | ALLUMINIUM 30% | OTHERS 10%

Made In: China

PRODUCTS RELATED



292942  
ROOF TENT FOR 0024886.

060



298133  
SIDE PANELS TENT FOR  
0024886.

060

RACE TAPE  
ACERBIS.COM  
279158



279158-

FEATURES

Lenght 250 m



RACE TAPE ACERBIS  
IN ACTION MT.250  
279159

DO NOT CROSS **ACERBIS** IN ACTION DO NOT CROSS



279159-1

279159-

FEATURES

Lenght 250 m



ATLANTIS BIB  
278051



278051-22



278051-



278051-55



278051-72



278051-

FEATURES

Perforated tear-resistant fabric  
New design with logo print

5 pcs. set

PRODUCT DETAILS

100% POLYESTER

Made In: Pakistan

SIZES

S | L | XXL



INFLATABLE ARCH  
110V  
237888



237888-55

FEATURES

110V



ACERBIS BANNER  
220593



ACERBIS 220593-

FEATURES

- 1 Logo

ACERBIS BANNERS  
ROLLS  
204241



ACERBIS 204241-

FEATURES

9 logos

OOSET BOOTS  
208208



208208-55

FEATURES

From size 40 to size 47 EN ISO 20345:2011 certified Water, mud, oil and grease protection Maximum protection against crushing of the toes thanks to the steel cap and maximum protection against penetration	Outsole with grip
---	-------------------

PRODUCT DETAILS

PVC 95% | OTHERS 5 %

Made In: China

SIZES

T.40 | T.41 | T.42 | T.43 | T.44 | T.45 | T.46 | T.47



ACERBIS FLAG  
214242



214242-



TRACK MARKER  
205326



205326-55

FEATURES

Height: 76,5 cm

RACE TAPE  
204447



204447-

FEATURES

Lenght 500m

MOTO CARPET  
217038



217038-

FEATURES

Rubberized bike mat, perfect for your dirtbike to be perched upon  
Ideal for maintenance of the vehicle  
Absorbent upper part is coupled with a layer of rubberized, non-slip and waterproof material  
Resistant to oil, grease, water and dirt stains the mat prevents contamination of the ground underneath

For indoor and outdoor use  
Easy to wash  
Mandatory use in several motocross tracks  
Size: 100x200 cm



MOTORBIKE COVER  
214430



214430-55

KEY RINGS  
298346



298346-



298346-



298346-



298346-



298346-



298346-

FEATURES

10 pieces

PRODUCT DETAILS

78% PVC | 12% Iron

Made In: China

SIZES

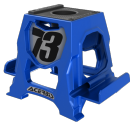
PHONE STAND  
279157



279157-32



279157-22












279157-62



279157-12

FRONT NUMBER  
PLATES RIDER  
AUTOGRAPH  
220548



	220548-22		220548-		220548-42		220548-
	220548-		220548-12		220548-		220548-72
	220548-						

SIZES

T.3

KIT DECAL LOGO  
ACERBIS  
242117



242117-

SUPERMOTO FRONT  
FENDER  
204039



204039-



204039-42



204039-



204039-



204039-12



204039-



204039-

SIZES

001 | T.3

SUPERMOTO  
EVOLUTION FRONT  
FENDER  
207268



207268-12

NOST FRONT FENDER  
204037



204037-42



204037-12



NOST REAR FENDER  
204076



204076-42



204076-12

SIZES

001 | T.2 | 13

BAJA REAR FENDER  
204053



204053-42