

FRONT FENDER
273200



273200-42



273200-



273200-62



273200-12

APPLICATIONS

HUSQVARNA TC 65 2017 2018 2019 2020 2021 2022 2023

FRONT FENDER
268640



268640-42



268640-



268640-62



268640-12

APPLICATIONS

HUSQVARNA TC 85 2018 2019 2020 2021 2022 2023 2024

FRONT FENDER
239339



239339-42



239339-12

APPLICATIONS

HUSABERG FE 250 2013 2014 | HUSABERG FE 350 2013 2014 | HUSABERG FE 450 2013 2014 | HUSABERG TE 125 2013 2014 | HUSABERG TE 250 2013 2014 | HUSABERG TE 300 2013 2014 | HUSQVARNA FE 250 2014 | HUSQVARNA FE 350 2014 | HUSQVARNA FE 450 2014 | HUSQVARNA FE 501 2014 | HUSQVARNA TE 125 2014 | HUSQVARNA TE 250 2014 | HUSQVARNA TE 300 2014

FRONT FENDER
246259



246259-42



246259-



246259-



246259-



246259-



246259-62



246259-



246259-



246259-



246259-12

APPLICATIONS

HUSQVARNA FC 250 2016 2017 2018 2019 2020 2021 2022 | HUSQVARNA FC 350 2016 2017 2018 2019 2020 2021 2022 | HUSQVARNA FC 450 2016 2017 2018 2019 2020 2021 2022 | HUSQVARNA FE 250 2017 2018 2019 2020 2021 2022 2023 | HUSQVARNA FE 350 2017 2018 2019 2020 2021 2022 2023 | HUSQVARNA FE 350 S 2022 2023 | HUSQVARNA FE 450 2017 2018 2019 2020 2021 2022 2023 | HUSQVARNA FE 501 2017 2018 2019 2020 2021 2022 2023 | HUSQVARNA FE 501 S 2022 2023 | HUSQVARNA FX 350 2020 2021 2022 | HUSQVARNA FX 450 2020 2021 2022 | HUSQVARNA TC 125 2016 2017 2018 2019 2020 2021 2022 | HUSQVARNA TC 250 2017 2018 2019 2020 2021 2022 | HUSQVARNA TE 150i 2020 2021 2022 2023 | HUSQVARNA TE 250 2017 | HUSQVARNA TE 250i 2018 2019 2020 2021 2022 2023 | HUSQVARNA TE 300 2017 | HUSQVARNA TE 300i 2018 2019 2020 2021 2022 2023 | HUSQVARNA TX 125 2017 2018 2019 | HUSQVARNA TX 300 2020 2021 2022

FRONT FENDER
239340



239340-42



239340-12

APPLICATIONS

HUSQVARNA FC 250 2014 2015 | HUSQVARNA FC 350 2014 2015 | HUSQVARNA FC 450 2014 2015 | HUSQVARNA FE 250 2015 2016 |
HUSQVARNA FE 350 2015 2016 | HUSQVARNA FE 450 2015 2016 | HUSQVARNA FE 501 2015 2016 | HUSQVARNA TC 125 2014 2015 |
HUSQVARNA TC 250 2014 2015 2016 | HUSQVARNA TE 125 2015 2016 | HUSQVARNA TE 250 2015 2016 | HUSQVARNA TE 300 2015 2016

**FRONT NUMBER
PLATE
273201**



273201-42



273201-



273201-62



273201-12

APPLICATIONS

HUSQVARNA TC 65 2017 2018 2019 2020 2021 2022 2023

**FRONT NUMBER
PLATE**
272657



272657-42



272657-



272657-



272657-



272657-



272657-



272657-



272657-12



272657-234



272657-

APPLICATIONS

HUSQVARNA FC 250 2019 2020 2021 2022 | HUSQVARNA FC 350 2019 2020 2021 2022 | HUSQVARNA FC 450 2019 2020 2021 2022 |
HUSQVARNA FX 350 2020 2021 2022 | HUSQVARNA FX 450 2020 2021 2022 | HUSQVARNA TC 125 2019 2020 2021 2022 | HUSQVARNA TC
250 2019 2020 2021 2022 | HUSQVARNA TX 300 2020 2021 2022

**FRONT NUMBER
PLATE
268641**



268641-42



268641-62



268641-12



268641-12

APPLICATIONS

HUSQVARNA TC 85 2018 2019 2020 2021 2022 2023 2024

**FRONT NUMBER
PLATE**
246258



246258-42



246258-



246258-



246258-12

APPLICATIONS

HUSQVARNA FC 250 2016 2017 2018 | HUSQVARNA FC 350 2016 2017 2018 | HUSQVARNA FC 450 2016 2017 2018 | HUSQVARNA TC 125 2016 2017 2018 | HUSQVARNA TC 250 2017 2018

**FRONT NUMBER
PLATE**
239337



239337-42



239337-12

APPLICATIONS

HUSQVARNA FC 250 2014 2015 | HUSQVARNA FC 350 2014 2015 | HUSQVARNA FC 450 2014 2015 | HUSQVARNA TC 125 2014 2015 |
HUSQVARNA TC 250 2014 2015 2016



HEADLIGHT MASK VSL
FOR HUSQVARNA
278048



278048-42

FEATURES

High energetic performance for OFFROAD use only.
Maximum brightness and depth of detail guaranteed, even in total dark situations.
IP68 waterproof: permanent impermeability up to 3 metres deep.
16 Led, 48W headlight.
4320 Lumen.
DC electrical supply from 9 to 32V.

Estimated led lifespan: 50000 hours.
Operating temperatures between between -40° and $+85^{\circ}$ C.
Easy and fast mounting, using the original headlight's rubber bands.
Developed for enduro KTM/HUSQVARNA bikes from 2017 to 2019

APPLICATIONS

HUSQVARNA FE 250 2017 2018 2019 | HUSQVARNA FE 350 2017 2018 2019 | HUSQVARNA FE 450 2017 2018 2019 | HUSQVARNA TE 250I 2018 2019 | HUSQVARNA TE 300I 2018 2019

**BOTTOM HEADLIGHT
MASK FOR
HUSQVARNA**
289570



289570-



289570-56



289570-12

APPLICATIONS

HUSQVARNA FE 250 2020 2021 2022 2023 | HUSQVARNA FE 350 2020 2021 2022 2023 | HUSQVARNA FE 450 2020 2021 2022 2023 |
HUSQVARNA FE 501 2020 2021 2022 2023 | HUSQVARNA TE 250I 2020 2021 2022 2023 | HUSQVARNA TE 300I 2020 2021 2022 2023

PRODUCTS RELATED



279149
HEADLIGHT MASK

□ 031

■ 090

HEADLIGHT MASK
279149



279149-



279149-12

APPLICATIONS

HUSQVARNA FE 250 2020 2021 2022 2023 | HUSQVARNA FE 350 2020 2021 2022 2023 | HUSQVARNA FE 350 S 2022 2023 | HUSQVARNA FE 450 2020 2021 2022 2023 | HUSQVARNA FE 501 2020 2021 2022 2023 | HUSQVARNA FE 501 S 2022 2023 | HUSQVARNA TE 150I 2020 2021 2022 2023 | HUSQVARNA TE 250I 2020 2021 2022 2023 | HUSQVARNA TE 300I 2020 2021 2022 2023

PRODUCTS RELATED



289570
BOTTOM HEADLIGHT MASK
FOR HUSQVARNA

□ 031

■ 062

■ 090

HEADLIGHT MASK
272679



272679-42



272679-62



272679-56



272679-



272679-12

APPLICATIONS

HUSQVARNA FE 250 2017 2018 2019 | HUSQVARNA FE 350 2017 2018 2019 | HUSQVARNA FE 450 2017 2018 2019 | HUSQVARNA FE 501 2017 2018 2019 | HUSQVARNA TE 250 2017 | HUSQVARNA TE 250I 2018 2019 | HUSQVARNA TE 300 2017 | HUSQVARNA TE 300I 2018 2019 | HUSQVARNA TX 125 2017 2018 2019

RADIATOR SCOOPS
268642



268642-42



268642-



268642-



268642-62

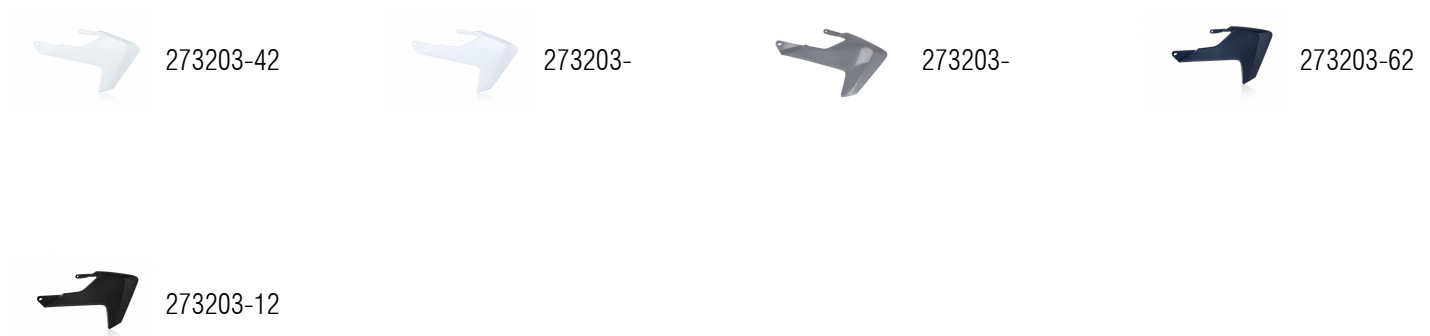


268642-12

APPLICATIONS

HUSQVARNA TC 85 2018 2019 2020 2021 2022 2023 2024

RADIATOR SCOOPS
273203



APPLICATIONS

HUSQVARNA TC 65 2017 2018 2019 2020 2021 2022 2023

RADIATOR SCOOPS
272658



APPLICATIONS

HUSQVARNA FC 250 2019 2020 2021 2022 | HUSQVARNA FC 350 2019 2020 2021 2022 | HUSQVARNA FC 450 2019 2020 2021 2022 | HUSQVARNA FE 250 2020 2021 2022 2023 | HUSQVARNA FE 350 2020 2021 2022 2023 | HUSQVARNA FE 350 S 2022 2023 | HUSQVARNA FE 450 2020 2021 2022 2023 | HUSQVARNA FE 501 2020 2021 2022 2023 | HUSQVARNA FE 501 S 2022 2023 | HUSQVARNA FS 450 2019 2020 | HUSQVARNA FX 350 2020 2021 2022 | HUSQVARNA FX 450 2020 2021 2022 | HUSQVARNA TC 125 2019 2020 2021 2022 | HUSQVARNA TC 250 2019 2020 2021 2022 | HUSQVARNA TE 150I 2020 2021 2022 2023 | HUSQVARNA TE 250I 2020 2021 2022 2023 | HUSQVARNA TE 300I 2020 2021 2022 2023 | HUSQVARNA TX 300 2020 2021 2022

RADIATOR SCOOPS
214191

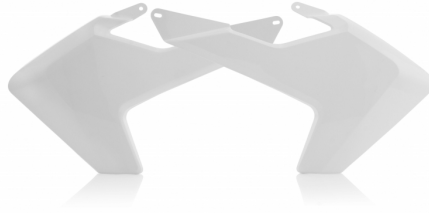


214191-32

APPLICATIONS

HUSQVARNA CR 250 2T 2008 | HUSQVARNA TC 250 2008 | HUSQVARNA WR 125 2T 2008 | HUSQVARNA WR 250 2T 2008

RADIATOR SCOOPS
244968



244968-42



244968-62



244968-



244968-



244968-12

APPLICATIONS

HUSQVARNA FC 250 2016 2017 2018 | HUSQVARNA FC 350 2016 2017 2018 | HUSQVARNA FC 450 2016 2017 2018 | HUSQVARNA FE 250 2017 2018 2019 | HUSQVARNA FE 350 2017 2018 2019 | HUSQVARNA FE 450 2017 2018 2019 | HUSQVARNA FE 501 2017 2018 2019 | HUSQVARNA TC 125 2016 2017 2018 | HUSQVARNA TC 250 2017 2018 | HUSQVARNA TE 250 2017 | HUSQVARNA TE 250I 2018 2019 | HUSQVARNA TE 300 2017 | HUSQVARNA TE 300I 2018 2019 | HUSQVARNA TX 125 2017 2018 2019

RADIATOR SCOOPS
239341



239341-42



239341-12



239341-234



239341-

FEATURES

All Acerbis replica plastic has the original factory shape of the OEM plastic of each specific model.

APPLICATIONS

HUSABERG FE 250 2013 2014 | HUSABERG FE 350 2013 2014 | HUSABERG FE 450 2013 2014 | HUSABERG TE 125 2013 2014 | HUSABERG TE 250 2013 2014 | HUSABERG TE 300 2013 2014 | HUSQVARNA FC 250 2014 2015 | HUSQVARNA FC 350 2014 2015 | HUSQVARNA FC 450 2014 2015 | HUSQVARNA FE 250 2014 2015 2016 | HUSQVARNA FE 350 2014 2015 2016 | HUSQVARNA FE 450 2014 2015 2016 | HUSQVARNA FE 501 2014 2015 2016 | HUSQVARNA TC 125 2014 2015 | HUSQVARNA TC 250 2014 2015 2016 | HUSQVARNA TE 125 2014 2015 2016 | HUSQVARNA TE 250 2014 2015 2016 | HUSQVARNA TE 300 2014 2015 2016

RADIATOR LOUVERS
FOR KTM /
HUSQVARNA
278053



278053-



278053-42



278053-12

APPLICATIONS

HUSQVARNA FC 250 2019 2020 2021 2022 | HUSQVARNA FC 350 2019 2020 2021 2022 | HUSQVARNA FC 450 2019 2020 2021 2022 | HUSQVARNA FE 250 2020 2021 2022 2023 | HUSQVARNA FE 350 2020 2021 2022 2023 | HUSQVARNA FE 350 PRO 2024 | HUSQVARNA FE 350 S 2022 2023 | HUSQVARNA FE 450 2020 2021 2022 2023 | HUSQVARNA FE 501 2020 2021 2022 2023 | HUSQVARNA FE 501 S 2022 2023 | HUSQVARNA FX 350 2020 2021 2022 | HUSQVARNA FX 450 2020 2021 2022 | HUSQVARNA TC 125 2019 2020 2021 2022 | HUSQVARNA TC 250 2019 2020 2021 2022 | HUSQVARNA TE 150I 2020 2021 2022 2023 | HUSQVARNA TE 250I 2020 2021 2022 2023 | HUSQVARNA TE 300I 2020 2021 2022 2023 | HUSQVARNA TX 300 2020 2021 2022 | KTM EXC 150 TPI 2020 2021 2022 2023 | KTM EXC 250 TPI 2020 2021 2022 2023 | KTM EXC 300 TPI 2020 2021 2022 2023 | KTM EXC-F 250 2020 2021 2022 2023 | KTM EXC-F 350 2020 2021 2022 2023 | KTM EXC-F 450 2020 2021 2022 2023 | KTM EXC-F 500 2020 2021 2022 2023 | KTM SX 125 2019 2020 2021 2022 | KTM SX 150 2019 2020 | KTM SX 250 2019 2020 2021 2022 | KTM SX-F 250 2019 2020 2021 2022 | KTM SX-F 350 2019 2020 2021 2022 | KTM SX-F 450 2019 2020 2021 2022 | KTM XC 250 TPI 2020 2021 2022 | KTM XC 300 TPI 2020 2021 2022 | KTM XC-F 250 2020 2021 2022 | KTM XC-F 350 2020 2021 2022 | KTM XC-F 450 2020 2021 2022 | KTM XC-W 250 TPI 2020 2021 2022 2023 | KTM XC-W 300 TPI 2020 2021 2022 2023 | KTM XCF-W 350 2020 2021 2022 2023 | KTM XCF-W 450 2023 | KTM XCF-W 500 2020 2021 2022 2023

PRODUCTS RELATED



273345
X-GRIP FOR HUSQVARNA
FRAME PROTECTOR

- 249
- 293
- 315
- 319
- 349
- 726
- 878

SIZES

KTM / RADIATOR LOUVERS
RADIATOR LOUVERS FOR KTM / HUSQVARNA



**RADIATOR LOUVERS
FOR KTM /
HUSQVARNA
269154**



269154-



269154-42



269154-



269154-12

APPLICATIONS

HUSQVARNA FC 250 2016 2017 2018 | HUSQVARNA FC 350 2016 2017 2018 | HUSQVARNA FC 450 2016 2017 2018 | HUSQVARNA FE 250 2017 2018 2019 | HUSQVARNA FE 350 2017 2018 2019 | HUSQVARNA FE 450 2017 2018 2019 | HUSQVARNA FE 501 2017 2018 2019 | HUSQVARNA TC 125 2016 2017 2018 | HUSQVARNA TC 250 2017 2018 | HUSQVARNA TE 250 2017 | HUSQVARNA TE 250i 2018 2019 | HUSQVARNA TE 300 2017 | HUSQVARNA TE 300i 2018 2019 | HUSQVARNA TX 125 2017 2018 2019 | KTM EXC 250 2017 | KTM EXC 250 TPI 2018 2019 | KTM EXC 300 2017 | KTM EXC 300 TPI 2018 2019 | KTM EXC-F 250 2017 2018 2019 | KTM EXC-F 350 2017 2018 2019 | KTM EXC-F 450 2017 2018 2019 | KTM EXC-F 500 2017 2018 2019 | KTM SX 125 2016 2017 2018 | KTM SX 150 2016 2017 2018 | KTM SX 250 2017 2018 | KTM SX-F 250 2016 2017 2018 | KTM SX-F 350 2016 2017 2018 | KTM SX-F 450 2016 2017 2018 | KTM XC-W 125 2017 2018 2019 | KTM XC-W 150 TPI 2019 | KTM XC-W 250 TPI 2019 | KTM XC-W 300 TPI 2019

SIZES

SIDE PANELS VENTED
279162



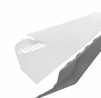
279162-42



279162-



279162-12

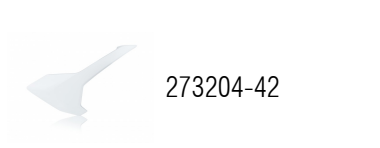


279162-

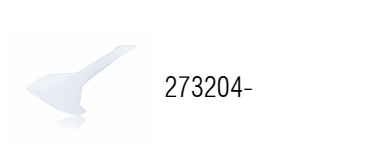
APPLICATIONS

HUSQVARNA FC 250 2019 2020 2021 2022 | HUSQVARNA FC 350 2019 2020 2021 2022 | HUSQVARNA FC 450 2019 2020 2021 2022 | HUSQVARNA FE 250 2020 2021 2022 2023 | HUSQVARNA FE 350 2020 2021 2022 2023 | HUSQVARNA FE 350 S 2022 2023 | HUSQVARNA FE 450 2020 2021 2022 2023 | HUSQVARNA FE 501 2020 2021 2022 2023 | HUSQVARNA FE 501 S 2022 2023 | HUSQVARNA FX 350 2020 2021 2022 | HUSQVARNA FX 450 2020 2021 2022 | HUSQVARNA TC 125 2019 2020 2021 2022 | HUSQVARNA TC 250 2019 2020 2021 2022 | HUSQVARNA TE 150I 2020 2021 2022 2023 | HUSQVARNA TE 250I 2020 2021 2022 2023 | HUSQVARNA TE 300I 2020 2021 2022 2023 | HUSQVARNA TX 300 2020 2021 2022

SIDE PANELS
273204



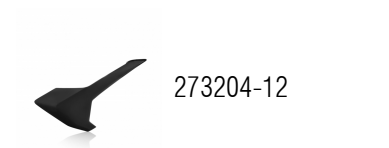
273204-42



273204-



273204-62



273204-12

APPLICATIONS

HUSQVARNA TC 65 2017 2018 2019 2020 2021 2022

SIDE PANELS
272659



272659-



272659-



272659-



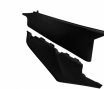
272659-



272659-42



272659-



272659-12



272659-



272659-



272659-237

APPLICATIONS

HUSQVARNA FC 250 2019 2020 2021 2022 | HUSQVARNA FC 350 2019 2020 2021 2022 | HUSQVARNA FC 450 2019 2020 2021 2022 | HUSQVARNA FE 250 2020 2021 2022 2023 | HUSQVARNA FE 350 2020 2021 2022 2023 | HUSQVARNA FE 350 S 2022 2023 | HUSQVARNA FE 450 2020 2021 2022 2023 | HUSQVARNA FE 501 2020 2021 2022 2023 | HUSQVARNA FE 501 S 2022 2023 | HUSQVARNA FX 350 2020 2021 2022 | HUSQVARNA FX 450 2020 2021 2022 | HUSQVARNA TC 125 2019 2020 2021 2022 | HUSQVARNA TC 250 2019 2020 2021 2022 | HUSQVARNA TE 150I 2020 2021 2022 2023 | HUSQVARNA TE 250I 2020 2021 2022 2023 | HUSQVARNA TE 300I 2020 2021 2022 2023 | HUSQVARNA TX 300 2020 2021 2022

SIDE PANELS
268643



268643-42



268643-



268643-62



268643-12

APPLICATIONS

HUSQVARNA TC 85 2018 2019 2020 2021 2022 2023 2024

SIDE PANELS
244955



244955-42



244955-62



244955-



244955-12



244955-



244955-



244955-

APPLICATIONS

HUSQVARNA FC 250 2016 2017 2018 | HUSQVARNA FC 350 2016 2017 2018 | HUSQVARNA FC 450 2016 2017 2018 | HUSQVARNA FE 250 2017 2018 2019 | HUSQVARNA FE 350 2017 2018 2019 | HUSQVARNA FE 450 2017 2018 2019 | HUSQVARNA FE 501 2017 2018 2019 | HUSQVARNA TC 125 2016 2017 2018 | HUSQVARNA TC 250 2017 2018 | HUSQVARNA TE 250 2017 | HUSQVARNA TE 250I 2018 2019 | HUSQVARNA TE 300 2017 | HUSQVARNA TE 300I 2018 2019 | HUSQVARNA TX 125 2017 2018 2019

SIDE PANELS
239342



239342-42



239342-12

APPLICATIONS

HUSABERG FE 250 2013 2014 | HUSABERG FE 350 2013 2014 | HUSABERG FE 450 2013 2014 | HUSABERG TE 125 2013 2014 | HUSABERG TE 250 2013 2014 | HUSABERG TE 300 2013 2014 | HUSQVARNA FC 250 2014 2015 | HUSQVARNA FC 350 2014 2015 | HUSQVARNA FC 450 2014 2015 | HUSQVARNA FE 250 2014 2015 2016 | HUSQVARNA FE 350 2014 2015 2016 | HUSQVARNA FE 450 2014 2015 2016 | HUSQVARNA FE 501 2014 2015 2016 | HUSQVARNA TC 125 2014 2015 | HUSQVARNA TC 250 2014 2016 | HUSQVARNA TE 125 2014 2015 2016 | HUSQVARNA TE 250 2014 2015 2016 | HUSQVARNA TE 300 2014 2015 2016

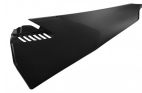
**AIR BOX COVER
VENTED**
280200



280200-42



280200-



280200-12

APPLICATIONS

HUSQVARNA FC 250 2019 2020 2021 2022 | HUSQVARNA FC 350 2019 2020 2021 2022 | HUSQVARNA FC 450 2019 2020 2021 2022 | HUSQVARNA FE 250 2020 2021 2022 2023 | HUSQVARNA FE 350 2020 2021 2022 2023 | HUSQVARNA FE 350 S 2022 2023 | HUSQVARNA FE 450 2020 2021 2022 2023 | HUSQVARNA FE 501 2020 2021 2022 2023 | HUSQVARNA FE 501 S 2022 2023 | HUSQVARNA FX 350 2020 2021 2022 | HUSQVARNA FX 450 2020 2021 2022 | HUSQVARNA TC 125 2019 2020 2021 2022 | HUSQVARNA TC 250 2019 2020 2021 2022 | HUSQVARNA TE 150I 2020 2021 2022 2023 | HUSQVARNA TE 250I 2020 2021 2022 2023 | HUSQVARNA TE 300I 2020 2021 2022 2023 | HUSQVARNA TX 300 2020 2021 2022

REAR FENDER
279160



279160-



279160-56



279160-12

APPLICATIONS

HUSQVARNA FE 250 2020 2021 2022 2023 | HUSQVARNA FE 350 2020 2021 2022 2023 | HUSQVARNA FE 350 S 2022 2023 | HUSQVARNA FE 450 2020 2021 2022 2023 | HUSQVARNA FE 501 2020 2021 2022 2023 | HUSQVARNA FE 501 S 2022 2023 | HUSQVARNA TE 150I 2020 2021 2022 2023 | HUSQVARNA TE 250I 2020 2021 2022 2023 | HUSQVARNA TE 300I 2020 2021 2022 2023

REAR FENDER
273205



273205-42



273205-



273205-62



273205-12



273205-56

APPLICATIONS

HUSQVARNA TC 65 2017 2018 2019 2020 2021 2022 2023

REAR FENDER
272660



272660-42



272660-



272660-



272660-



272660-



272660-56



272660-



272660-



272660-12

APPLICATIONS

HUSQVARNA FC 250 2019 2020 2021 2022 | HUSQVARNA FC 350 2019 2020 2021 2022 | HUSQVARNA FC 450 2019 2020 2021 2022 | HUSQVARNA FX 350 2020 2021 2022 | HUSQVARNA FX 450 2020 2021 2022 | HUSQVARNA TC 125 2019 2020 2021 2022 | HUSQVARNA TC 250 2019 2020 2021 2022 | HUSQVARNA TX 300 2020 2021 2022

REAR FENDER
268644



268644-42



268644-



268644-56



268644-62



268644-12

APPLICATIONS

HUSQVARNA TC 85 2018 2019 2020 2021 2022 2023 2024

REAR FENDER
263403



263403-42



263403-62



263403-



263403-12

APPLICATIONS

HUSQVARNA FE 250 2017 2018 2019 | HUSQVARNA FE 350 2017 2018 2019 | HUSQVARNA FE 450 2017 2018 2019 | HUSQVARNA FE 501 2017 2018 2019 | HUSQVARNA TE 250 2017 | HUSQVARNA TE 250I 2018 2019 | HUSQVARNA TE 300 2017 | HUSQVARNA TE 300I 2018 2019 | HUSQVARNA TX 125 2017 2018 2019

REAR FENDER
244964



244964-42



244964-62



244964-



244964-



244964-12



244964-

APPLICATIONS

HUSQVARNA FC 250 2016 2017 2018 | HUSQVARNA FC 350 2016 2017 2018 | HUSQVARNA FC 450 2016 2017 2018 | HUSQVARNA TC 125 2016 2017 2018 | HUSQVARNA TC 250 2017 2018



REAR FENDER
239338



239338-42



239338-12

APPLICATIONS

HUSABERG FE 250 2013 2014 | HUSABERG FE 350 2013 2014 | HUSABERG FE 450 2013 2014 | HUSABERG TE 125 2013 2014 | HUSABERG TE 250 2013 2014 | HUSABERG TE 300 2013 2014 | HUSQVARNA FC 250 2014 2015 | HUSQVARNA FC 350 2014 2015 | HUSQVARNA FC 450 2014 2015 | HUSQVARNA FE 250 2014 2015 2016 | HUSQVARNA FE 350 2014 2015 2016 | HUSQVARNA FE 450 2014 2015 2016 | HUSQVARNA FE 501 2014 2015 2016 | HUSQVARNA TC 125 2014 2015 | HUSQVARNA TC 250 2014 2015 2016 | HUSQVARNA TE 125 2014 2015 2016 | HUSQVARNA TE 250 2014 2015 2016 | HUSQVARNA TE 300 2014 2015 2016

LOWER FORK COVER
273202



273202-42



273202-



273202-62



273202-56



273202-12

APPLICATIONS

HUSQVARNA TC 65 2017 2018 2019 2020 2021 2022 2023



LOWER FORK COVER
268600



268600-



268600-



268600-



268600-



268600-



268600-42



268600-



268600-



268600-62



268600-



268600-56



268600-12



268600-32

GAS GAS / LOWER FORK COVERS
LOWER FORK COVER



APPLICATIONS

GAS GAS MC 85 2021 2022 2023 2024 | HUSQVARNA TC 85 2018 2019 2020 2021 2022 2023 2024 | KTM SX 85 2018 2019 2020 2021 2022 2023 2024

SIZES

16



LOWER FORK COVER
247068



247068-42



247068-



247068-



247068-



247068-



247068-62



247068-



247068-55



247068-56



247068-



247068-



247068-



247068-12

APPLICATIONS

HUSQVARNA FC 250 2016 2017 2018 2019 2020 2021 2022 | HUSQVARNA FC 350 2016 2017 2018 2019 2020 2021 2022 | HUSQVARNA FC 450 2016 2017 2018 2019 2020 2021 2022 | HUSQVARNA FE 250 2016 2017 2018 2019 2020 2021 2022 2023 | HUSQVARNA FE 350 2016 2017 2018 2019 2020 2021 2022 2023 | HUSQVARNA FE 350 S 2022 2023 | HUSQVARNA FE 450 2016 2017 2018 2019 2020 2021 2022 2023 | HUSQVARNA FE 501 2016 2017 2018 2019 2020 2021 2022 2023 | HUSQVARNA FE 501 S 2022 2023 | HUSQVARNA FX 350 2020 2021 2022 | HUSQVARNA FX 450 2020 2021 2022 | HUSQVARNA TC 125 2016 2017 2018 2019 2020 2021 2022 | HUSQVARNA TC 250 2016 2017 2018 2019 2020 2021 2022 | HUSQVARNA TE 125 2016 | HUSQVARNA TE 150I 2020 2021 2022 2023 | HUSQVARNA TE 250 2016 2017 | HUSQVARNA TE 250I 2018 2019 2020 2021 2022 2023 | HUSQVARNA TE 300 2016 2017 | HUSQVARNA TE 300I 2018 2019 2020 2021 2022 2023 | HUSQVARNA TX 125 2017 2018 2019 | HUSQVARNA TX 300 2020 2021 2022



LOWER FORK COVER
211375



211375-22



211375-42



211375-55



211375-12

APPLICATIONS

HUSQVARNA FC 250 2014 | HUSQVARNA FC 350 2014 | HUSQVARNA FC 450 2014 | HUSQVARNA FE 250 2014 2015 | HUSQVARNA FE 350 2014 2015 | HUSQVARNA FE 450 2014 2015 | HUSQVARNA FE 501 2014 2015 | HUSQVARNA TC 125 2014 | HUSQVARNA TC 250 2014 | HUSQVARNA TC 300 2014 | HUSQVARNA TE 125 2014 2015 | HUSQVARNA TE 250 2014 2015 | HUSQVARNA TE 300 2014 2015 | KTM EXC 125 2008 2009 2010 2011 2012 2013 2014 2015 | KTM EXC 200 2008 2009 2010 2011 2012 2013 2014 2015 | KTM EXC 250 2008 2009 2010 2011 2012 2013 2014 2015 | KTM EXC 300 2008 2009 2010 2011 2012 2013 2014 2015 | KTM EXC-F 250 2008 2009 2010 2011 2012 2013 2014 2015 | KTM EXC-F 350 2012 2013 2014 2015 | KTM EXC-F 400 2008 2009 2010 2011 | KTM EXC-F 450 2008 2009 2010 2011 2012 2013 2014 2015 | KTM EXC-F 500 2008 2009 2010 2011 2012 2013 2014 2015 | KTM EXC-F 530 2008 2009 2010 2011 | KTM SX 125 2008 2009 2010 2011 2012 2013 2014 | KTM SX 150 2011 2012 2013 2014 | KTM SX 250 2008 2009 2010 2011 2012 2013 2014 | KTM SX-F 250 2011 2012 2013 2014 | KTM SX-F 350 2011 2012 2013 2014 | KTM SX-F 450 2008 2009 2010 2011 2012 2013 2014 | KTM SX-F 505 2008

SIZES

PLASTIC KIT
279155



279155-



279155-12



279155-



279155-



279155-

APPLICATIONS

HUSQVARNA FE 250 2020 2021 2022 2023 | HUSQVARNA FE 350 2020 2021 2022 2023 | HUSQVARNA FE 350 S 2022 2023 | HUSQVARNA FE 450 2020 2021 2022 2023 | HUSQVARNA FE 501 2020 2021 2022 2023 | HUSQVARNA FE 501 S 2022 2023 | HUSQVARNA TE 150I 2020 2021 2022 2023 | HUSQVARNA TE 250I 2020 2021 2022 2023 | HUSQVARNA TE 300I 2020 2021 2022 2023

SIZES

T.22

PLASTIC KIT
273199



273199-42



273199-



273199-62



273199-12



273199-



273199-



273199-

APPLICATIONS

HUSQVARNA TC 65 2017 2018 2019 2020 2021 2022 2023

SIZES

T.20

PLASTIC KIT
272656



272656-42



272656-



272656-



272656-



272656-



272656-



272656-12



272656-237



272656-



272656-



272656-

APPLICATIONS

HUSQVARNA FC 250 2019 2020 2021 2022 | HUSQVARNA FC 350 2019 2020 2021 2022 | HUSQVARNA FC 450 2019 2020 2021 2022 | HUSQVARNA FX 350 2020 2021 2022 | HUSQVARNA FX 450 2020 2021 2022 | HUSQVARNA TC 125 2019 2020 2021 2022 | HUSQVARNA TC 250 2019 2020 2021 2022 | HUSQVARNA TX 300 2020 2021 2022

SIZES

T.20 | T.22

PLASTIC KIT
268645



268645-42



268645-



268645-62



268645-12



268645-



268645-



268645-

APPLICATIONS

HUSQVARNA TC 85 2018 2019 2020 2021 2022 2023 2024

SIZES

T.20

PLASTIC KIT
263402



263402-42



263402-62



263402-



263402-12



263402-



263402-



263402-

FEATURES

All Acerbis replica plastic has the original factory shape of the OEM plastic of each specific model.

APPLICATIONS

HUSQVARNA FE 250 2017 2018 2019 | HUSQVARNA FE 350 2017 2018 2019 | HUSQVARNA FE 450 2017 2018 2019 | HUSQVARNA FE 501 2017 2018 2019 | HUSQVARNA TE 250 2017 | HUSQVARNA TE 250I 2018 2019 | HUSQVARNA TE 300 2017 | HUSQVARNA TE 300I 2018 2019 | HUSQVARNA TX 125 2017 2018 2019

SIZES

019 | T.18

PLASTIC KIT
246261



246261-42



246261-



246261-12



246261-



246261-



246261-

APPLICATIONS

HUSQVARNA FC 250 2016 2017 2018 | HUSQVARNA FC 350 2016 2017 2018 | HUSQVARNA FC 450 2016 2017 2018 | HUSQVARNA TC 125 2016 2017 2018 | HUSQVARNA TC 250 2017 2018 | HUSQVARNA TC 300 2016 2017 2018

SIZES

17 | T.18

PLASTIC KIT
239344



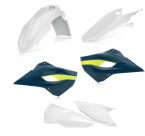
239344-12



239344-



239344-



239344-

APPLICATIONS

HUSQVARNA FC 250 2014 2015 | HUSQVARNA FC 350 2014 2015 | HUSQVARNA FC 450 2014 2015 | HUSQVARNA TC 125 2014 2015 | HUSQVARNA TC 250 2014 2015 2016

SIZES

15 | 16

PLASTIC KIT
240307



240307-12



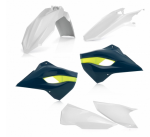
240307-



240307-



240307-



240307-

APPLICATIONS

HUSABERG FE 250 2013 2014 | HUSABERG FE 350 2013 2014 | HUSABERG FE 450 2013 2014 | HUSABERG TE 125 2013 2014 | HUSABERG TE 250 2013 2014 | HUSABERG TE 300 2013 2014 | HUSQVARNA FE 250 2014 2015 2016 | HUSQVARNA FE 350 2014 2015 2016 | HUSQVARNA FE 450 2014 2015 2016 | HUSQVARNA FE 501 2014 2015 2016 | HUSQVARNA TE 125 2014 2015 2016 | HUSQVARNA TE 250 2014 2015 2016 | HUSQVARNA TE 300 2014 2015 2016

SIZES

FULL PLASTIC KIT FOR
HUSQVARNA
279153



279153-



279153-12



279153-



279153-



279153-

APPLICATIONS

HUSQVARNA FE 250 2020 2021 2022 2023 | HUSQVARNA FE 350 2020 2021 2022 2023 | HUSQVARNA FE 350 S 2022 2023 | HUSQVARNA FE 450 2020 2021 2022 2023 | HUSQVARNA FE 501 2020 2021 2022 2023 | HUSQVARNA FE 501 S 2022 2023 | HUSQVARNA TE 150I 2020 2021 2022 2023 | HUSQVARNA TE 250I 2020 2021 2022 2023 | HUSQVARNA TE 300I 2020 2021 2022 2023

PRODUCTS RELATED



280199
HEADLIGHT MASK VSL FOR
HUSQVARNA

□ 030



246263
ACERBIS CHAIN GUIDE/SLIDER
KIT FOR KTM/HUSQVARNA/GAS
GAS

■ 010

■ 090



280196
X-FUTURE HANDGUARDS

■ 203

■ 209

■ 232

■ 234

■ 237

■ 239

■ 241

■ 245

■ 251

■ 273

■ 279

■ 313

■ 315

■ 319

■ 343

■ 349

■ 371

■ 377

■ 848

■ 879

SIZES

T.22

FULL PLASTIC KIT FOR
HUSQVARNA
273198



273198-42



273198-



273198-62



273198-12



273198-



273198-



273198-

APPLICATIONS

HUSQVARNA TC 65 2017 2018 2019 2020 2021 2022 2023

SIZES

T.20

FULL PLASTIC KIT FOR
HUSQVARNA
272655



272655-42



272655-



272655-



272655-



272655-



272655-



272655-



272655-12



272655-237



272655-315



272655-



272655-



272655-

APPLICATIONS

HUSQVARNA FC 250 2019 2020 2021 2022 | HUSQVARNA FC 350 2019 2020 2021 2022 | HUSQVARNA FC 450 2019 2020 2021 2022 |
HUSQVARNA FX 350 2020 2021 2022 | HUSQVARNA FX 450 2020 2021 2022 | HUSQVARNA TC 125 2019 2020 2021 2022 | HUSQVARNA TC
250 2019 2020 2021 2022 | HUSQVARNA TX 300 2020 2021 2022

SIZES

T.20 | T.22

FULL PLASTIC KIT FOR
HUSQVARNA
273343



273343-42



273343-62



273343-



273343-12



273343-

FEATURES

APPLICATION:

HUSQVARNA FE 250 2017 2018 2019
HUSQVARNA FE 350 2017 2018 2019
HUSQVARNA FE 450 2017 2018 2019
HUSQVARNA FE 501 2017 2018 2019

HUSQVARNA TE 250 2017
HUSQVARNA TE 250I 2018 2019
HUSQVARNA TE 300 2017
HUSQVARNA TE 300I 2018 2019
HUSQVARNA TX 125 2017 2018 2019

**FULL PLASTIC KIT FOR
HUSQVARNA**
268646



268646-42



268646-



268646-62



268646-12



268646-



268646-



268646-

APPLICATIONS

HUSQVARNA TC 85 2018 2019 2020 2021 2022 2023 2024

SIZES

T.20

FULL PLASTIC KIT FOR
HUSQVARNA
268593



268593-62



268593-12

APPLICATIONS

HUSQVARNA TC 85 2014 2015 2016 2017

SIZES

14 | 16

**FULL PLASTIC KIT FOR
HUSQVARNA**
247069



247069-12



247069-

FULL PLASTIC KIT FOR
HUSQVARNA
246260



246260-42



246260-



246260-12



246260-315



246260-



246260-



246260-



246260-



246260-

APPLICATIONS

HUSQVARNA FC 250 2016 2017 2018 | HUSQVARNA FC 350 2016 2017 2018 | HUSQVARNA FC 450 2016 2017 2018 | HUSQVARNA TC 125 2016 2017 2018 | HUSQVARNA TC 250 2017 2018 | HUSQVARNA TC 300 2016 2017 2018

SIZES

17 | T.18

FULL PLASTIC KIT FOR
HUSQVARNA
240308



240308-12



240308-



240308-



240308-



240308-

APPLICATIONS

HUSQVARNA FC 250 2014 2015 | HUSQVARNA FC 350 2014 2015 | HUSQVARNA FC 450 2014 2015 | HUSQVARNA TC 125 2014 2015 | HUSQVARNA TC 250 2014 2015 2016

SIZES

15 | 16

**FULL PLASTIC KIT FOR
HUSQVARNA**
239345



239345-12



239345-



239345-



239345-

APPLICATIONS

HUSQVARNA FE 250 2014 2015 | HUSQVARNA FE 350 2014 2015 | HUSQVARNA FE 450 2014 2015 | HUSQVARNA FE 501 2014 2015 |
HUSQVARNA TE 125 2014 2015 | HUSQVARNA TE 250 2014 2015 | HUSQVARNA TE 300 2014 2015

SIZES

15



REPLICA CHAIN GUIDE
298188



298188-12










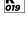


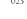
APPLICATIONS

GAS GAS MC 85 2021 2022 2023 2024 | HUSQVARNA FE 250 2014 2015 2016 2017 2018 2019 2020 2021 2022 2023 | HUSQVARNA FE 350 2014 2015 2016 2017 2018 2019 2020 2021 2022 2023 | HUSQVARNA FE 350 PRO 2024 | HUSQVARNA FE 350 S 2022 2023 | HUSQVARNA FE 450 2014 2015 2016 2017 2018 2019 2020 2021 2022 2023 | HUSQVARNA FE 501 2014 2015 2016 2017 2018 2019 2020 2021 2022 2023 | HUSQVARNA FE 501 S 2022 2023 | HUSQVARNA TC 85 2015 2016 2017 2018 2019 2020 2021 2022 2023 2024 | HUSQVARNA TE 125 2014 2015 2016 | HUSQVARNA TE 150i 2020 2021 2022 2023 | HUSQVARNA TE 250 2014 2015 2016 2017 | HUSQVARNA TE 250i 2018 2019 2020 2021 2022 2023 | HUSQVARNA TE 300 2014 2015 2016 2017 | HUSQVARNA TE 300i 2018 2019 2020 2021 2022 2023 | KTM EXC 125 2014 2015 2016 | KTM EXC 150 TPI 2020 2021 2022 2023 | KTM EXC 200 2014 2015 2016 2017 2018 | KTM EXC 250 2014 2015 2016 2017 | KTM EXC 250 TPI 2017 2018 2019 2020 2021 2022 2023 | KTM EXC 300 2014 2016 2017 | KTM EXC 300 TPI 2018 2019 2020 2021 2022 2023 | KTM EXC-F 250 2014 2015 2016 2017 2018 2019 2020 2021 2022 2023 | KTM EXC-F 350 2014 2015 2016 2017 2018 2019 2020 2021 2022 2023 | KTM EXC-F 450 2014 2015 2016 2017 2018 2019 2020 2021 2022 2023 | KTM SX 85 2015 2016 2017 2018 2019 2020 2021 2022 2023 2024 | KTM XC-W 125 2017 2018 2019 | KTM XC-W 150 TPI 2019 2020 2021 2022 2023 | KTM XC-W 250 TPI 2019 2020 2021 2022 2023 | KTM XC-W 300 TPI 2019 2020 2021 2022 2023 | KTM XCF-W 350 2020 2021 2022 2023 | KTM XCF-W 450 2023 | KTM XCF-W 500 2020 2021 2022 2023

PRODUCTS RELATED



268602
FULL PLASTIC KIT FOR KTM

-  011.016  030
-  031  072
-  090  092
-  110  132
-  553  553.019
-  553.020  553.021
-  553.023



CHAIN SLIDER
297937



297937-12

APPLICATIONS

GAS GAS EC 250 2024 | GAS GAS EC 250 F 2024 | GAS GAS EC 300 2024 | GAS GAS EC 350 F 2024 | GAS GAS EC 450 F 2024 | GAS GAS EC 500 F 2024 | GAS GAS EX 250 2024 | GAS GAS EX 250 F 2024 | GAS GAS EX 300 2024 | GAS GAS EX 350 F 2024 | GAS GAS EX 450 F 2024 | GAS GAS MC 125 2024 | GAS GAS MC 250 2024 | GAS GAS MC 250 F 2024 | GAS GAS MC 350 F 2024 | GAS GAS MC 450 F 2024 | HUSQVARNA FC 250 2023 2024 | HUSQVARNA FC 350 2023 2024 | HUSQVARNA FC 450 2023 2024 | HUSQVARNA FE 250 2024 | HUSQVARNA FE 350 2024 | HUSQVARNA FE 350 PRO 2024 | HUSQVARNA FE 350 S 2024 | HUSQVARNA FE 350 W 2024 | HUSQVARNA FE 450 2024 | HUSQVARNA FE 501 2024 | HUSQVARNA FE 501 S 2024 | HUSQVARNA FE 501 W 2024 | HUSQVARNA FX 350 2023 2024 | HUSQVARNA FX 450 2023 2024 | HUSQVARNA TC 125 2023 2024 | HUSQVARNA TC 250 2023 2024 | HUSQVARNA TE 150 2024 | HUSQVARNA TE 250 2024 | HUSQVARNA TE 300 2024 | HUSQVARNA TE 300 PRO 2024 | HUSQVARNA TX 300 2023 2024 | KTM EXC 150 2024 | KTM EXC 250 2024 | KTM EXC 300 2024 | KTM EXC-F 250 2024 | KTM EXC-F 350 2024 | KTM EXC-F 450 2024 | KTM EXC-F 500 2024 | KTM SX 125 2023 2024 | KTM SX 250 2023 2024 | KTM SX 300 2023 2024 | KTM SX-F 250 2023 2024 | KTM SX-F 350 2023 2024 | KTM SX-F 450 2023 2024 | KTM XC 125 2023 2024 | KTM XC 250 2023 2024 | KTM XC 300 2023 2024 | KTM XC-F 250 2023 2024 | KTM XC-F 350 2023 2024 | KTM XC-F 450 2023 2024 | KTM XC-W 150 2024 | KTM XC-W 250 2024 | KTM XC-W 300 2024 | KTM XCF-W 450 2024 | KTM XW-F 350 2024 | KTM XW-F 500 2024



REPLICA CHAIN GUIDE
297938



297938-12

APPLICATIONS

GAS GAS EC 250 2024 | GAS GAS EC 250 F 2024 | GAS GAS EC 300 2024 | GAS GAS EC 350 F 2024 | GAS GAS EC 450 F 2024 | GAS GAS EC 500 F 2024 | GAS GAS EX 250 2024 | GAS GAS EX 250 F 2024 | GAS GAS EX 300 2024 | GAS GAS EX 350 F 2024 | GAS GAS EX 450 F 2024 | GAS GAS MC 125 2024 | GAS GAS MC 250 2024 | GAS GAS MC 250 F 2024 | GAS GAS MC 350 F 2024 | GAS GAS MC 450 F 2024 | HUSQVARNA FC 250 2023 2024 | HUSQVARNA FC 350 2023 2024 | HUSQVARNA FC 450 2023 2024 | HUSQVARNA FE 250 2024 | HUSQVARNA FE 350 2024 | HUSQVARNA FE 350 PRO 2024 | HUSQVARNA FE 350 S 2024 | HUSQVARNA FE 350 W 2024 | HUSQVARNA FE 450 2024 | HUSQVARNA FE 501 2024 | HUSQVARNA FE 501 S 2024 | HUSQVARNA FE 501 W 2024 | HUSQVARNA FX 350 2023 2024 | HUSQVARNA FX 450 2023 2024 | HUSQVARNA TC 125 2023 2024 | HUSQVARNA TC 250 2023 2024 | HUSQVARNA TE 150 2024 | HUSQVARNA TE 250 2024 | HUSQVARNA TE 300 2024 | HUSQVARNA TE 300 PRO 2024 | HUSQVARNA TX 300 2023 2024 | KTM EXC 150 2024 | KTM EXC 250 2024 | KTM EXC 300 2024 | KTM EXC-F 250 2024 | KTM EXC-F 350 2024 | KTM EXC-F 450 2024 | KTM EXC-F 500 2024 | KTM SX 125 2023 2024 | KTM SX 250 2023 2024 | KTM SX 300 2023 2024 | KTM SX-F 250 2023 2024 | KTM SX-F 350 2023 2024 | KTM SX-F 450 2023 2024 | KTM XC 125 2023 2024 | KTM XC 250 2023 2024 | KTM XC 300 2023 2024 | KTM XC-F 250 2023 2024 | KTM XC-F 350 2023 2024 | KTM XC-F 450 2023 2024 | KTM XC-W 150 2024 | KTM XC-W 250 2024 | KTM XC-W 300 2024 | KTM XCF-W 450 2024 | KTM XW-F 350 2024 | KTM XW-F 500 2024

REPLICA CHAIN GUIDE
212564



212564-12

APPLICATIONS

HUSABERG FE 250 2013 2014 | HUSABERG FE 350 2013 2014 | HUSABERG FE 450 2013 2014 | HUSABERG TE 125 2009 2010 2011 2012 2013 2014 | HUSABERG TE 250 2013 2014 | HUSABERG TE 300 2013 2014 | KTM EXC 125 2008 2009 2010 2011 2012 2013 | KTM EXC 200 2008 2009 2010 2011 2012 2013 | KTM EXC 250 2008 2009 2010 2011 2012 2013 | KTM EXC 300 2008 2009 2010 2011 2012 2013 | KTM EXC 380 2T 2008 2009 2010 2011 2012 2013 | KTM EXC-F 250 2008 2009 2010 2011 2012 2013 | KTM EXC-F 350 2008 2009 2010 2011 2012 2013 | KTM EXC-F 400 2008 2009 2010 2011 2012 2013 | KTM EXC-F 450 2008 2009 2010 2011 2012 2013 | KTM EXC-F 500 2007 2008 2009 2010 2011 2012 2013 | KTM EXC-F 520 2008 2009 2010 2011 2012 2013 | KTM SX 125 2007 | KTM SX 150 2007 | KTM SX 200 2007 | KTM SX 250 2007 | KTM SX 85 2007 | KTM SX-F 250 2007 | KTM SX-F 350 2007 | KTM SX-F 450 2007 | KTM SX-F 505 2007

**CHAIN GUIDE FOR
KTM/HUSQVARNA
221506**



221506-12

APPLICATIONS

HUSQVARNA FC 250 2015 2016 2017 2018 2019 2020 2021 2022 | HUSQVARNA FC 350 2015 2016 2017 2018 2019 2020 2021 2022 | HUSQVARNA FC 450 2015 2016 2017 2018 2019 2020 2021 2022 | HUSQVARNA FX 350 2020 2021 2022 2023 2024 | HUSQVARNA FX 450 2020 2021 2022 | HUSQVARNA TC 125 2015 2016 2017 2018 2019 2020 2021 2022 | HUSQVARNA TC 250 2015 2016 2017 2018 2019 2020 2021 2022 | HUSQVARNA TX 300 2020 2021 2022 | KTM SX 125 2008 2009 2010 2011 2012 2013 2014 2015 2016 2017 2018 2019 2020 2021 2022 2023 | KTM SX 150 2011 2012 2013 2014 2015 2016 2017 2018 2019 | KTM SX 200 2011 2012 2013 2014 2015 2016 2017 | KTM SX 250 2008 2009 2010 2011 2012 2013 2014 2015 2016 2017 2018 2019 2020 2021 2022 | KTM SX-F 250 2008 2009 2010 2011 2012 2013 2014 2015 2016 2017 2018 2019 2020 2021 2022 | KTM SX-F 350 2008 2009 2010 2011 2012 2013 2014 2015 2016 2017 2018 2019 2020 2021 2022 | KTM SX-F 450 2008 2009 2010 2011 2012 2013 2014 2015 2016 2017 2018 2019 2020 2021 2022 | KTM SX-F 505 2008 2009 2010 2011 2012 2013 2014 2015 2016 2017 2018 | KTM XC 125 2020 2021 2022 | KTM XC 250 2019 2023 2024 | KTM XC 250 TPI 2020 2021 2022 | KTM XC 300 2019 | KTM XC 300 TPI 2020 2021 2022 | KTM XC-F 250 2019 2020 2021 2022 | KTM XC-F 350 2019 2020 2021 2022 2024 | KTM XC-F 450 2019 2020 2021 2022

MUD FLAP
297936



297936-12

APPLICATIONS

HUSQVARNA FC 250 2023 2024 | HUSQVARNA FC 350 2023 2024 | HUSQVARNA FC 450 2023 2024 | HUSQVARNA FX 350 2023 2024 | HUSQVARNA FX 450 2023 2024 | HUSQVARNA TC 125 2023 2024 | HUSQVARNA TC 250 2023 2024 | HUSQVARNA TX 300 2023 2024 | KTM SX 125 2023 2024 | KTM SX 250 2023 2024 | KTM SX 300 2023 2024 | KTM SX-F 250 2023 2024 | KTM SX-F 350 2023 2024 | KTM SX-F 450 2023 2024 | KTM XC 125 2023 2024 | KTM XC 250 2023 2024 | KTM XC 300 2023 2024 | KTM XC-F 250 2023 2024 | KTM XC-F 350 2023 2024 | KTM XC-F 450 2023 2024

MUD FLAP
297633



297633-12

APPLICATIONS

GAS GAS MC 65 2021 2022 2023 | HUSQVARNA TC 65 2017 2018 2019 2020 2021 2022 2023 | KTM SX 65 2016 2017 2018 2019 2020 2021 2022 2023