

X-POWER FOR
YAMAHA
298621



298621-12



298621-62

FEATURES

Ignition crankcase and clutch crankcase protection kit
Protects against wear, impact, abrasion, mud, sand and debris.
Right side: clutch crankcase protection, water pump and lower crankcase
Left side: ignition crankcase protection
Resistant to high temperatures, numerous air vents prevent overheating

Applies with the original screws adhering perfectly to the clutch crankcase/ignition crankcase.
Mounting kit included
Compatible with Acerbis skid plates
Engraved logo

APPLICATIONS

FANTIC XXF 250 2025 | YAMAHA WR 250 F 2025 | YAMAHA YZ 250 F 2024 2025 | YAMAHA YZ 250 FX 2025



X-POWER FOR
YAMAHA
298187



298187-62



298187-12

FEATURES

Ignition crankcase and clutch crankcase protection kit
Protects against wear, impact, abrasion, mud, sand and debris.
Right side: clutch crankcase protection, water pump and lower crankcase
Left side: ignition crankcase protection
Resistant to high temperatures, numerous air vents prevent overheating

Applies with the original screws adhering perfectly to the clutch crankcase/ignition crankcase.
Mounting kit included
Compatible with Acerbis skid plates
Engraved logo
Weight: 370g

PRODUCT DETAILS

98% Nylon | 2% Brass

Made In: Italy

APPLICATIONS

FANTIC XXF 450 2024 2025 | YAMAHA WR 450 F 2024 2025 | YAMAHA YZ 450 F 2023 2024 2025 | YAMAHA YZ 450 FX 2023 2024 2025

X-POWER YAMAHA
FOR TENERE 700
297617



297617-12

FEATURES

Motor Crankcase and Ignition/Clutch covers that protect against wear from boots, impacts, dirt, mud, and other debris
Right side: provides protection for the clutch cover, water pump, and lower casing
Left side: provides protection to the ignition cover and clutch actuator
Easy to install by utilizing the original crankcase and ignition/clutch cover bolts

Resistant to high temperatures
Numerous vents prevent any form of overheating
Designed not to interfere with boots when using brake and clutch in any condition
Compatible with ACERBIS skid plates

PRODUCT DETAILS

Nylon 96% | Others 4%

Made In: Italy

APPLICATIONS

YAMAHA MT-07 2014 2015 2016 2017 2018 2019 2020 2021 2022 2023 | YAMAHA TENERE 700 2019 2020 2021 2022 2023 2024 | YAMAHA TENERE 700 EXPLORE EDITIO 2023 | YAMAHA TENERE 700 EXTREME EDITIO 2023 2024 | YAMAHA TENERE 700 RALLY EDITION 2020 2021 2022 2023 | YAMAHA TENERE 700 WORLD RAID 2022 2023 2024 | YAMAHA TENERE 700 WORLD RALLY 2023 2024 | YAMAHA TRACER 7 2020 2021 2022 | YAMAHA XSR 700 2021 2022 2023 | YAMAHA XSR 700 LEGACY 2023 | YAMAHA XSR 700 XTRIBUTE 2020 2021 2022 2023

PRODUCTS RELATED



HANDGUARDS ARGON YAM
TT700/T900

- 030 ■ 090
- 209 ▣ 237
- 251 ■ 293
- 349



291147
FUEL TANKS FOR TENERE 700
23L

- 090.700 ■ 110.700
- 120.700



297616
SKID PLATE FOR TENERE 700

- 090



291146
X-GRIP FRAME PROTECTOR
FOR YAMAHA

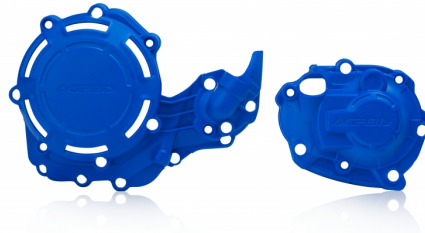
- 090 ▣ 314
- 316 ■ 323



297615
TEKETMAGNET SWING ARM
FOR TENERE 700

- 090

X-POWER FOR
YAMAHA
279169



279169-62



279169-12

FEATURES

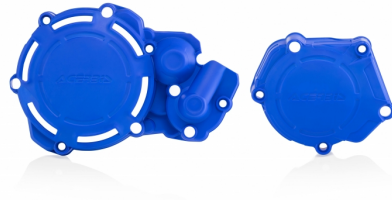
Motor Crankcase and Ignition/Clutch covers that protect against wear from boots, impacts, dirt, mud, and other debris
Right side: provides protection for the clutch cover, water pump, and lower casing
Left side: provides protection to the ignition cover and clutch actuator

Molded openings to access the filter cover and oil cap
Easy to install by utilizing the original crankcase and ignition/clutch cover bolts
Resistant to high temperatures
Designed not to interfere with boots
Compatible with ACERBIS skid plates

APPLICATIONS

FANTIC XEF 450 2021 2022 2023 2024 2025 | YAMAHA YZ 450 F 2018 2019 2020 2021 2022 | YAMAHA YZ 450 FX 2019 2020 2021 2022

X-POWER FOR
YAMAHA
278069



278069-62



278069-12

FEATURES

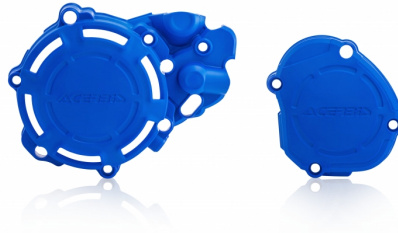
Motor Crankcase and Ignition/Clutch covers that protect against wear from boots, impacts, dirt, mud, and other debris
Right side: provides protection for the clutch cover, water pump, and lower casing
Left side: provides protection to the ignition cover and clutch actuator

Molded openings to access the filter cover and oil cap
Easy to install by utilizing the original crankcase and ignition/clutch cover bolts
Resistant to high temperatures
Designed not to interfere with boots
Compatible with ACERBIS skid plates

APPLICATIONS

FANTIC XX 250 2021 2022 2023 2024 2025 | YAMAHA YZ 250 2005 2006 2007 2008 2009 2010 2011 2012 2013 2014 2015 2016 2017 2018 2019 2020 2021 2022 2023 2024 2025

X-POWER FOR
YAMAHA
278068



278068-62



278068-12

FEATURES

Motor Crankcase and Ignition/Clutch covers that protect against wear from boots, impacts, dirt, mud, and other debris
Right side: provides protection for the clutch cover, water pump, and lower casing
Left side: provides protection to the ignition cover and clutch actuator

Molded openings to access the filter cover and oil cap
Easy to install by utilizing the original crankcase and ignition/clutch cover bolts
Resistant to high temperatures
Designed not to interfere with boots
Compatible with ACERBIS skid plates

APPLICATIONS

FANTIC XE 125 2021 2022 2023 2024 2025 | FANTIC XX 125 2021 2022 2023 2024 2025 | YAMAHA YZ 125 2005 2006 2007 2008 2009 2010 2011 2012 2013 2014 2015 2016 2017 2018 2019 2020 2021 2022 2023 2024 2025