

**X-POWER FOR  
YAMAHA**  
298621



298621-12



298621-62

**FEATURES**

Ignition crankcase and clutch crankcase protection kit  
Protects against wear, impact, abrasion, mud, sand and debris.  
Right side: clutch crankcase protection, water pump and lower crankcase  
Left side: ignition crankcase protection  
Resistant to high temperatures, numerous air vents prevent overheating

Applies with the original screws adhering perfectly to the clutch crankcase/ignition crankcase.  
Mounting kit included  
Compatible with Acerbis skid plates  
Engraved logo

**APPLICATIONS**

YAMAHA WR 250 F 2025 | YAMAHA YZ 250 F 2025 | YAMAHA YZ 250 FX 2025



X-POWER FOR  
YAMAHA  
298187



298187-62



298187-12

## FEATURES

Ignition crankcase and clutch crankcase protection kit  
Protects against wear, impact, abrasion, mud, sand and debris.  
Right side: clutch crankcase protection, water pump and lower crankcase  
Left side: ignition crankcase protection  
Resistant to high temperatures, numerous air vents prevent overheating

Applies with the original screws adhering perfectly to the clutch crankcase/ignition crankcase.  
Mounting kit included  
Compatible with Acerbis skid plates  
Engraved logo  
Weight: 370g

## PRODUCT DETAILS

98% Nylon | 2% Brass

Made In: Italy

## APPLICATIONS

FANTIC XXF 450 2024 2025 | YAMAHA WR 450 F 2024 2025 | YAMAHA YZ 450 F 2023 2024 2025 | YAMAHA YZ 450 FX 2023 2024 2025

X-POWER YAMAHA  
FOR TENERE 700  
297617



297617-12

## FEATURES

Motor Crankcase and Ignition/Clutch covers that protect against wear from boots, impacts, dirt, mud, and other debris  
Right side: provides protection for the clutch cover, water pump, and lower casing  
Left side: provides protection to the ignition cover and clutch actuator  
Easy to install by utilizing the original crankcase and ignition/clutch cover bolts

Resistant to high temperatures  
Numerous vents prevent any form of overheating  
Designed not to interfere with boots when using brake and clutch in any condition  
Compatible with ACERBIS skid plates

## PRODUCT DETAILS

Nylon 96% | Others 4%

Made In: Italy

## APPLICATIONS

YAMAHA MT-07 2014 2015 2016 2017 2018 2019 2020 2021 2022 2023 | YAMAHA TENERE 700 2019 2020 2021 2022 2023 2024 | YAMAHA TENERE 700 EXPLORE EDITIO 2023 | YAMAHA TENERE 700 EXTREME EDITIO 2023 2024 | YAMAHA TENERE 700 RALLY EDITION 2020 2021 2022 2023 | YAMAHA TENERE 700 WORLD RAID 2022 2023 2024 | YAMAHA TENERE 700 WORLD RALLY 2023 2024 | YAMAHA TRACER 7 2020 2021 2022 | YAMAHA XSR 700 2021 2022 2023 | YAMAHA XSR 700 LEGACY 2023 | YAMAHA XSR 700 XTRIBUTE 2020 2021 2022 2023

**PRODUCTS RELATED**



291147  
FUEL TANKS FOR TENERE 700  
23L

- 090.700 ■ 110.700
- 120.700



297616  
SKID PLATE FOR TENERE 700

- 090



291146  
X-GRIP FRAME PROTECTOR  
FOR YAMAHA

- 090 ■ 314
- 316 ■ 323



297615  
TEKETMAGNET SWING ARM  
FOR TENERE 700

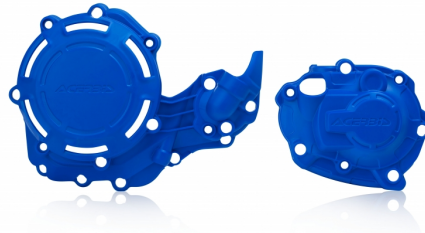
- 090



HANDGUARDS ARGON YAM  
TT700/T900

- 030 ■ 090
- 209 ■ 237
- 251 ■ 293
- 349

X-POWER FOR  
YAMAHA  
279169



279169-62



279169-12

## FEATURES

Motor Crankcase and Ignition/Clutch covers that protect against wear from boots, impacts, dirt, mud, and other debris

Right side: provides protection for the clutch cover, water pump, and lower casing

Left side: provides protection to the ignition cover and clutch actuator

Molded openings to access the filter cover and oil cap

Easy to install by utilizing the original crankcase and ignition/clutch cover bolts

Resistant to high temperatures

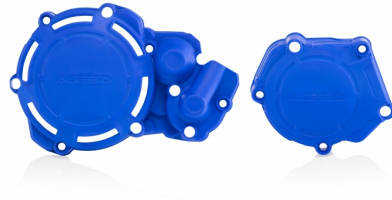
Designed not to interfere with boots

Compatible with ACERBIS skid plates

## APPLICATIONS

FANTIC XEF 450 2021 2022 2023 2024 2025 | YAMAHA YZ 450 F 2018 2019 2020 2021 2022 | YAMAHA YZ 450 FX 2019 2020 2021 2022

X-POWER FOR  
YAMAHA  
278069



278069-62



278069-12

## FEATURES

Motor Crankcase and Ignition/Clutch covers that protect against wear from boots, impacts, dirt, mud, and other debris

Right side: provides protection for the clutch cover, water pump, and lower casing

Left side: provides protection to the ignition cover and clutch actuator

Molded openings to access the filter cover and oil cap

Easy to install by utilizing the original crankcase and ignition/clutch cover bolts

Resistant to high temperatures

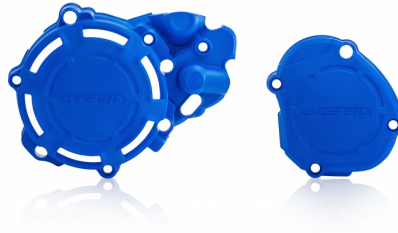
Designed not to interfere with boots

Compatible with ACERBIS skid plates

## APPLICATIONS

FANTIC XX 250 2021 2022 2023 2024 2025 | YAMAHA YZ 250 2005 2006 2007 2008 2009 2010 2011 2012 2013 2014 2015 2016 2017 2018 2019 2020 2021 2022 2023 2024 2025

X-POWER FOR  
YAMAHA  
278068



278068-62



278068-12

## FEATURES

Motor Crankcase and Ignition/Clutch covers that protect against wear from boots, impacts, dirt, mud, and other debris

Right side: provides protection for the clutch cover, water pump, and lower casing

Left side: provides protection to the ignition cover and clutch actuator

Molded openings to access the filter cover and oil cap

Easy to install by utilizing the original crankcase and ignition/clutch cover bolts

Resistant to high temperatures

Designed not to interfere with boots

Compatible with ACERBIS skid plates

## APPLICATIONS

FANTIC XE 125 2021 2022 2023 2024 2025 | FANTIC XX 125 2021 2022 2023 2024 2025 | YAMAHA YZ 125 2005 2006 2007 2008 2009 2010 2011 2012 2013 2014 2015 2016 2017 2018 2019 2020 2021 2022 2023 2024 2025