



X-POWER FOR
KTM/HUSQVARNA
298326



298326-



298326-12



298326-62

FEATURES

Protects against wear, shock, abrasion, mud sand and debris.
Right side: clutch cover protection, water pump and lower crankcase
Left side: ignition cover protection
Resistant to high temperatures, numerous vents prevent overheating

Mounting kit included, fits perfectly on clutch/ignition cover by taking advantage of the original screws
Compatible with Acerbis skid plates
Weight: 375g

PRODUCT DETAILS

90% Plastic | 6% Steel | 4% Others

Made In: Italy

APPLICATIONS

GAS GAS EC 250 F 2024 2025 | GAS GAS EC 350 F 2024 2025 | HUSQVARNA FE 250 2024 2025 | HUSQVARNA FE 350 2024 2025 | HUSQVARNA FE 350 PRO 2024 | HUSQVARNA FE 350 S 2024 2025 | HUSQVARNA FE 350 W 2024 | KTM EXC-F 250 2024 2025 | KTM EXC-F 350 2024 2025 | KTM XW-F 350 2024 2025

SIZES

X-POWER / KTM
X-POWER FOR KTM/HUSQVARNA

ACERBI



**X-POWER FOR
KTM/HUSQVARNA
298323**



298323-00



298323-62



298323-12

FEATURES

Protects against wear, shock, abrasion, mud sand and debris.
Right side: clutch cover protection, water pump and lower crankcase
Left side: ignition cover protection
Resistant to high temperatures, numerous vents prevent overheating

Mounting kit included, fits perfectly on clutch/ignition cover.
Compatible with Acerbis skid plates
Weight: 375g

PRODUCT DETAILS

90% Plastic | 6% Steel | 4% Others

Made In: Italy

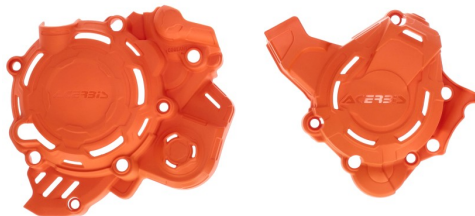
APPLICATIONS

HUSQVARNA TE 250 2024 2025 | HUSQVARNA TE 300 2024 2025 | HUSQVARNA TE 300 PRO 2024 2025 | KTM EXC 250 2024 2025 | KTM EXC 300 2024 2025 | KTM XC-W 250 2024 2025 | KTM XC-W 300 2024 2025

SIZES



X-POWER FOR
KTM/HUSQVARNA
298147



298147-



298147-62



298147-12

FEATURES

Protects against wear, shocks, abrasion, mud sand and debris.
Right side: clutch cover protection, water pump and lower crankcase
Left side: ignition cover protection
Durable to high temperatures, numerous air vents prevent overheating

Applies with the original screws adhering perfectly to the clutch crankcase/ignition.
Mounting kit included
Compatible with acerbis sub-engines
Engraved logo
Weight: 350g

PRODUCT DETAILS

98% Nylon | 2% Brass

Made In: Italy

APPLICATIONS

GAS GAS EC 125 2025 | GAS GAS MC 125 2025 | HUSQVARNA TC 125 2023 2024 2025 | HUSQVARNA TC 150 2025 | HUSQVARNA TE 125 2025 | HUSQVARNA TE 150 2024 2025 | KTM EXC 150 2024 2025 | KTM SX 125 2023 2024 2025 | KTM XC 125 2023 2024 2025 | KTM XC-W 125 2025 | KTM XC-W 150 2024 2025

SIZES

X-POWER / KTM
X-POWER FOR KTM/HUSQVARNA

ACERBI



X-POWER FOR
KTM/HUSQVARNA
298136



298136-62



298136-12



298136-

FEATURES

Protects against wear, shock, abrasion, mud sand and debris
Right side: clutch cover protection, water pump and lower crankcase
Left side: ignition cover protection and ignition cable
Resistant to high temperatures, numerous vents prevent overheating

Attaches with the original screws adhering perfectly to the clutch/ignition cover
Mounting kit included
Compatible with Acerbis sub-engine covers
Engraved logo
Weight: 350g

PRODUCT DETAILS

96% Nylon | 4% Brass

Made In: Italy

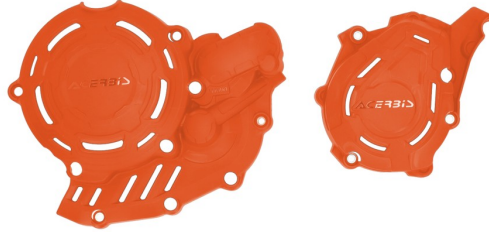
APPLICATIONS

HUSQVARNA TC 250 2023 2024 2025 | HUSQVARNA TX 300 2023 2024 2025 | KTM SX 250 2023 2024 2025 | KTM SX 300 2023 2024 2025 | KTM XC 250 2023 2024 2025 | KTM XC 300 2023 2024 2025

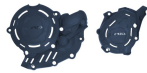
SIZES



**X-POWER FOR
KTM/HUSQVARNA
297943**



297943-



297943-62



297943-12

APPLICATIONS

GAS GAS EC 450 F 2024 2025 | GAS GAS EC 500 F 2024 2025 | GAS GAS EX 450 F 2024 2025 | GAS GAS MC 450 F 2024 2025 | HUSQVARNA FC 450 2023 2024 2025 | HUSQVARNA FE 450 2024 2025 | HUSQVARNA FE 501 2025 | HUSQVARNA FE 501 S 2024 2025 | HUSQVARNA FE 501 W 2024 | HUSQVARNA FX 450 2025 | KTM EXC-F 450 2024 2025 | KTM EXC-F 500 2024 2025 | KTM SX-F 450 2023 2024 2025 | KTM XC-F 450 2023 2024 2025 | KTM XCF-W 450 2024 2025 | KTM XW-F 500 2024 2025

SIZES



X-POWER FOR KTM
297760



297760-62



297760-12



297760-

FEATURES

Motor Crankcase and Ignition/Clutch covers that protect against wear from boots, impacts, dirt, mud, and other debris
Right side: provides protection for the clutch cover, water pump, and lower casing
Left side: provides protection to the ignition cover and clutch actuator
Easy to install by utilizing the original crankcase and ignition/clutch cover bolts

Resistant to high temperatures
Numerous vents prevent any form of overheating
Designed not to interfere with boots when using brake and clutch in any condition
Compatible with ACERBIS skid plates

PRODUCT DETAILS

Nylon 87% | Steel 8% | Brass 5%

Made In: Italy

APPLICATIONS

HUSQVARNA FC 250 2023 2024 2025 | HUSQVARNA FC 350 2023 2024 2025 | HUSQVARNA FX 350 2023 2024 2025 | KTM SX-F 250 2023 2024 2025 | KTM SX-F 350 2023 2024 2025 | KTM XC-F 250 2023 2024 2025 | KTM XC-F 350 2023 2024 2025

SIZES

X-POWER / KTM
X-POWER FOR KTM

ACERBI

**X-POWER FOR
KTM/HUSQVARNA**
264551



264551-



264551-42



264551-12

FEATURES

Motor Crankcase and Ignition/Clutch covers that protect against wear from boots, impacts, dirt, mud, and other debris
Right side: provides protection for the clutch cover, water pump, and lower casing
Left side: provides protection to the ignition cover and clutch actuator

Molded openings to access the filter cover and oil cap
Easy to install by utilizing the original crankcase and ignition/clutch cover bolts
Resistant to high temperatures
Designed not to interfere with boots
Compatible with ACERBIS skid plates

APPLICATIONS

GAS GAS EX 250 2022 2023 | GAS GAS EX 300 2021 2022 2023 | GAS GAS MC 250 2022 2023 | HUSQVARNA TC 250 2019 2020 2021 2022 | HUSQVARNA TE 250I 2020 2021 2022 2023 | HUSQVARNA TE 300I 2020 2021 2022 2023 | HUSQVARNA TX 300 2020 2021 2022 | KTM EXC 250 TPI 2020 2021 2022 2023 | KTM EXC 300 TPI 2020 2021 2022 2023 | KTM SX 250 2019 2020 2021 2022 | KTM XC 250 TPI 2020 2021 2022 | KTM XC 300 TPI 2020 2021 2022 | KTM XC-W 250 TPI 2020 2021 2022 2023 | KTM XC-W 300 TPI 2020 2021 2022 2023

SIZES

**X-POWER FOR
KTM/HUSQVARNA**
273213



273213-42



273213-12

FEATURES

Motor Crankcase and Ignition/Clutch covers that protect against wear from boots, impacts, dirt, mud, and other debris
Right side: provides protection for the clutch cover, water pump, and lower casing
Left side: provides protection to the ignition cover and clutch actuator

Molded openings to access the filter cover and oil cap
Easy to install by utilizing the original crankcase and ignition/clutch cover bolts
Resistant to high temperatures
Designed not to interfere with boots
Compatible with ACERBIS skid plates

APPLICATIONS

GAS GAS EX 250 F 2021 2022 2023 | GAS GAS EX 350 F 2021 2022 2023 | GAS GAS MC 250 F 2021 2022 2023 | GAS GAS MC 350 F 2022 2023 | HUSQVARNA FC 250 2016 2017 2018 2019 2020 2021 2022 | HUSQVARNA FC 350 2016 2017 2018 2019 2020 2021 2022 | HUSQVARNA FX 350 2020 2021 2022 | KTM SX-F 250 2016 2017 2018 2019 2020 2021 2022 | KTM SX-F 350 2016 2017 2018 2019 2020 2021 2022 | KTM XC-F 250 2020 2021 2022 | KTM XC-F 350 2020 2021 2022

SIZES

X-POWER FOR
KTM/HUSQVARNA
273197



273197-



273197-42



273197-12

FEATURES

Motor Crankcase and Ignition/Clutch covers that protect against wear from boots, impacts, dirt, mud, and other debris
Right side: provides protection for the clutch cover, water pump, and lower casing
Left side: provides protection to the ignition cover and clutch actuator

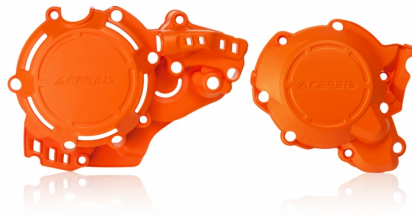
Molded openings to access the filter cover and oil cap
Easy to install by utilizing the original crankcase and ignition/clutch cover bolts
Resistant to high temperatures
Designed not to interfere with boots
Compatible with ACERBIS skid plates

APPLICATIONS

GAS GAS EC 250 F 2021 2022 2023 | GAS GAS EC 350 F 2021 2022 2023 | HUSQVARNA FE 250 2017 2018 2019 2020 2021 2022 2023 | HUSQVARNA FE 350 2017 2018 2019 2020 2021 2022 2023 | HUSQVARNA FE 350 S 2022 2023 | KTM EXC-F 250 2017 2018 2019 2020 2021 2022 2023 | KTM EXC-F 350 2017 2018 2019 2020 2021 2022 2023 | KTM FREERIDE 250 F 2018 2019 2020 | KTM XCF-W 350 2020 2021 2022 2023

SIZES

**X-POWER FOR
KTM/HUSQVARNA**
272684



272684-



272684-42



272684-12

FEATURES

Motor Crankcase and Ignition/Clutch covers that protect against wear from boots, impacts, dirt, mud, and other debris
Right side: provides protection for the clutch cover, water pump, and lower casing
Left side: provides protection to the ignition cover and clutch actuator

Molded openings to access the filter cover and oil cap
Easy to install by utilizing the original crankcase and ignition/clutch cover bolts
Resistant to high temperatures
Designed not to interfere with boots
Compatible with ACERBIS skid plates

APPLICATIONS

HUSQVARNA TC 250 2017 2018 | HUSQVARNA TE 250 2017 | HUSQVARNA TE 250I 2018 2019 | HUSQVARNA TE 300 2017 | HUSQVARNA TE 300I 2018 2019 | KTM EXC 250 2017 | KTM EXC 250 TPI 2018 2019 | KTM EXC 300 2017 | KTM EXC 300 TPI 2018 2019 | KTM SX 250 2017 2018

SIZES

**X-POWER FOR
KTM/HUSQVARNA**
270976



FEATURES

Motor Crankcase and Ignition/Clutch covers that protect against wear from boots, impacts, dirt, mud, and other debris
Right side: provides protection for the clutch cover, water pump, and lower casing
Left side: provides protection to the ignition cover and clutch actuator

Molded openings to access the filter cover and oil cap
Easy to install by utilizing the original crankcase and ignition/clutch cover bolts
Resistant to high temperatures
Designed not to interfere with boots
Compatible with ACERBIS skid plates

APPLICATIONS

GAS GAS EX 450 F 2021 2022 2023 | HUSQVARNA FC 450 2016 2017 2018 2019 2020 2021 2022 | HUSQVARNA FE 450 2017 2018 2019 2020 2021 2022 2023 | HUSQVARNA FE 501 2019 2020 2021 2022 2023 | HUSQVARNA FE 501 S 2022 2023 | HUSQVARNA FX 450 2020 2021 2022 | KTM EXC-F 450 2017 2018 2019 2020 2021 2022 2023 | KTM EXC-F 500 2017 2018 2019 2020 2021 2022 2023 | KTM SX-F 450 2016 2017 2018 2019 2020 2021 2022 | KTM XC-F 450 2020 2021 2022 | KTM XCF-W 450 2023 | KTM XCF-W 500 2020 2021 2022 2023

SIZES