

X-POWER FOR
KTM/HUSQVARNA
298136



298136-62



298136-12



298136-

FEATURES

Protects against wear, shock, abrasion, mud sand and debris
Right side: clutch cover protection, water pump and lower crankcase
Left side: ignition cover protection and ignition cable
Resistant to high temperatures, numerous vents prevent overheating

Attaches with the original screws adhering perfectly to the clutch/ignition cover
Mounting kit included
Compatible with Acerbis sub-engine covers
Engraved logo
Weight: 350g

PRODUCT DETAILS

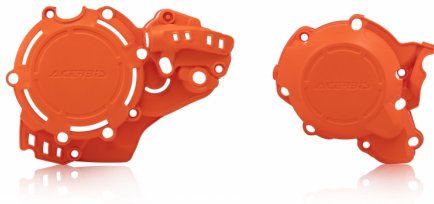
96% Nylon | 4% Brass

Made In: Italy

APPLICATIONS

HUSQVARNA TC 250 2023 2024 2025 | HUSQVARNA TC 300 2025 | HUSQVARNA TX 300 2023 2024 2025 | KTM SX 150 2025 | KTM SX 250 2023 2024 2025 | KTM SX 300 2023 2024 2025 | KTM XC 250 2023 2024 2025 | KTM XC 300 2023 2024 2025

X-POWER FOR
KTM/HUSQVARNA
264551



264551-



264551-42



264551-12

FEATURES

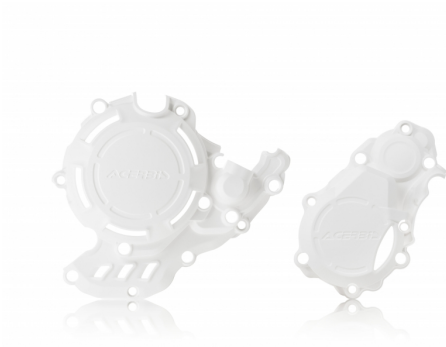
Motor Crankcase and Ignition/Clutch covers that protect against wear from boots, impacts, dirt, mud, and other debris
Right side: provides protection for the clutch cover, water pump, and lower casing
Left side: provides protection to the ignition cover and clutch actuator

Molded openings to access the filter cover and oil cap
Easy to install by utilizing the original crankcase and ignition/clutch cover bolts
Resistant to high temperatures
Designed not to interfere with boots
Compatible with ACERBIS skid plates

APPLICATIONS

GAS GAS EX 250 2022 2023 | GAS GAS EX 300 2021 2022 2023 | GAS GAS MC 250 2022 2023 | HUSQVARNA TC 250 2019 2020 2021 2022 | HUSQVARNA TE 250i 2020 2021 2022 2023 | HUSQVARNA TE 300i 2020 2021 2022 2023 | HUSQVARNA TX 300 2020 2021 2022 | KTM EXC 250 TPI 2020 2021 2022 2023 | KTM EXC 300 TPI 2020 2021 2022 2023 | KTM SX 250 2019 2020 2021 2022 | KTM XC 250 TPI 2020 2021 2022 | KTM XC 300 TPI 2020 2021 2022 | KTM XC-W 250 TPI 2020 2021 2022 2023 | KTM XC-W 300 TPI 2020 2021 2022 2023

X-POWER FOR
KTM/HUSQVARNA
273213



273213-42



273213-12

FEATURES

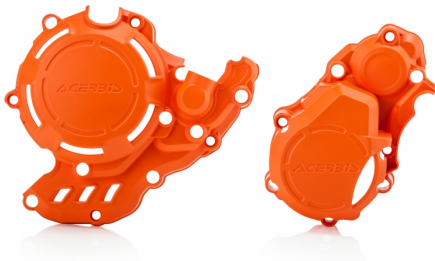
Motor Crankcase and Ignition/Clutch covers that protect against wear from boots, impacts, dirt, mud, and other debris
Right side: provides protection for the clutch cover, water pump, and lower casing
Left side: provides protection to the ignition cover and clutch actuator

Molded openings to access the filter cover and oil cap
Easy to install by utilizing the original crankcase and ignition/clutch cover bolts
Resistant to high temperatures
Designed not to interfere with boots
Compatible with ACERBIS skid plates

APPLICATIONS

GAS GAS EX 250 F 2021 2022 2023 | GAS GAS EX 350 F 2021 2022 2023 | GAS GAS MC 250 F 2021 2022 2023 | GAS GAS MC 350 F 2022 2023 | HUSQVARNA FC 250 2016 2017 2018 2019 2020 2021 2022 | HUSQVARNA FC 350 2016 2017 2018 2019 2020 2021 2022 | HUSQVARNA FX 350 2020 2021 2022 | KTM SX-F 250 2016 2017 2018 2019 2020 2021 2022 | KTM SX-F 350 2016 2017 2018 2019 2020 2021 2022 | KTM XC-F 250 2020 2021 2022 | KTM XC-F 350 2020 2021 2022

X-POWER FOR
KTM/HUSQVARNA
273197



273197-



273197-42



273197-12

FEATURES

Motor Crankcase and Ignition/Clutch covers that protect against wear from boots, impacts, dirt, mud, and other debris
Right side: provides protection for the clutch cover, water pump, and lower casing
Left side: provides protection to the ignition cover and clutch actuator

Molded openings to access the filter cover and oil cap
Easy to install by utilizing the original crankcase and ignition/clutch cover bolts
Resistant to high temperatures
Designed not to interfere with boots
Compatible with ACERBIS skid plates

APPLICATIONS

GAS GAS EC 250 F 2021 2022 2023 | GAS GAS EC 350 F 2021 2022 2023 | HUSQVARNA FE 250 2017 2018 2019 2020 2021 2022 2023 | HUSQVARNA FE 350 2017 2018 2019 2020 2021 2022 2023 | HUSQVARNA FE 350 S 2022 2023 | KTM EXC-F 250 2017 2018 2019 2020 2021 2022 2023 | KTM EXC-F 350 2017 2018 2019 2020 2021 2022 2023 | KTM FREERIDE 250 F 2018 2019 2020 | KTM XCF-W 350 2020 2021 2022 2023

X-POWER FOR
KTM/HUSQVARNA
272684



272684-



272684-42



272684-12

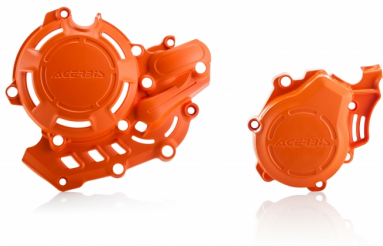
FEATURES

Motor Crankcase and Ignition/Clutch covers that protect against wear from boots, impacts, dirt, mud, and other debris	Molded openings to access the filter cover and oil cap
Right side: provides protection for the clutch cover, water pump, and lower casing	Easy to install by utilizing the original crankcase and ignition/clutch cover bolts
Left side: provides protection to the ignition cover and clutch actuator	Resistant to high temperatures
	Designed not to interfere with boots
	Compatible with ACERBIS skid plates

APPLICATIONS

HUSQVARNA TC 250 2017 2018 | HUSQVARNA TE 250 2017 | HUSQVARNA TE 250I 2018 2019 | HUSQVARNA TE 300 2017 | HUSQVARNA TE 300I 2018 2019 | KTM EXC 250 2017 | KTM EXC 250 TPI 2018 2019 | KTM EXC 300 2017 | KTM EXC 300 TPI 2018 2019 | KTM SX 250 2017 2018

X-POWER FOR
KTM/HUSQVARNA
270976



270976-



270976-



270976-



270976-12

FEATURES

Motor Crankcase and Ignition/Clutch covers that protect against wear from boots, impacts, dirt, mud, and other debris
Right side: provides protection for the clutch cover, water pump, and lower casing
Left side: provides protection to the ignition cover and clutch actuator

Molded openings to access the filter cover and oil cap
Easy to install by utilizing the original crankcase and ignition/clutch cover bolts
Resistant to high temperatures
Designed not to interfere with boots
Compatible with ACERBIS skid plates

APPLICATIONS

GAS GAS EX 450 F 2021 2022 2023 | HUSQVARNA FC 450 2016 2017 2018 2019 2020 2021 2022 | HUSQVARNA FE 450 2017 2018 2019 2020 2021 2022 2023 | HUSQVARNA FE 501 2019 2020 2021 2022 2023 | HUSQVARNA FE 501 S 2022 2023 | HUSQVARNA FX 450 2020 2021 2022 | KTM EXC-F 450 2017 2018 2019 2020 2021 2022 2023 | KTM EXC-F 500 2017 2018 2019 2020 2021 2022 2023 | KTM SX-F 450 2016 2017 2018 2019 2020 2021 2022 | KTM XC-F 450 2020 2021 2022 | KTM XCF-W 450 2023 | KTM XCF-W 500 2020 2021 2022 2023