

X-POWER GASGAS MC450 21

code: **291155**

APPLICATIONS

- GAS GAS MC 450 F 2021 2022



BLACK

.....



KIT X-POWER CRF450R/RX 2021

code: **289571**

APPLICATIONS

- HONDA CRF 450 R 2021 2022
- HONDA CRF 450 RX 2021 2022



BLACK



RED



X-POWER GAS GAS

code: **287287**

DETAILS

- Motor Crankcase and Ignition/Clutch covers that protect against wear from boots, impacts, dirt, mud, and other debris
- Right side: provides protection for the clutch cover, water pump, and lower casing
- Left side: provides protection to the ignition cover and clutch actuator
- Molded openings to access the filter cover and oil cap
- Easy to install by utilizing the original crankcase and ignition/clutch cover bolts
- Resistant to high temperatures
- Designed not to interfere with boots
- Compatible with ACERBIS skid plates



APPLICATIONS

- GAS GAS EC 250 2021 2022
- GAS GAS EC 300 2021 2022

BLACK



RED



KIT X-POWER PROTECTION

code: **285684**

MATERIAL

- 100% nylon

DETAILS

- Motor Crankcase and Ignition/Clutch covers that protect against wear from boots, impacts, dirt, mud, and other debris
- Right side: provides protection for the clutch cover, water pump, and lower casing
- Left side: provides protection to the ignition cover and clutch actuator
- Molded openings to access the filter cover and oil cap
- Easy to install by utilizing the original crankcase and ignition/clutch cover bolts
- Resistant to high temperatures
- Designed not to interfere with boots
- Compatible with ACERBIS skid plates



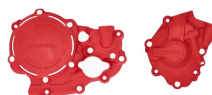
APPLICATIONS

- HONDA CRF 250 R 2018 2019 2020 2021
- HONDA CRF 250 RX 2019 2020 2021
- HONDA CRF 300 RX 2019 2020 2021

BLACK



RED



X-POWER HONDA

code: **279195**

DETAILS

- Motor Crankcase and Ignition/Clutch covers that protect against wear from boots, impacts, dirt, mud, and other debris
- Right side: provides protection for the clutch cover, water pump, and lower casing
- Left side: provides protection to the ignition cover and clutch actuator
- Molded openings to access the filter cover and oil cap
- Easy to install by utilizing the original crankcase and ignition/clutch cover bolts
- Resistant to high temperatures
- Designed not to interfere with boots
- Compatible with ACERBIS skid plates



APPLICATIONS

- HONDA CRF 450 R 2017 2018 2019 2020
- HONDA CRF 450 RX 2019 2020

BLACK



RED

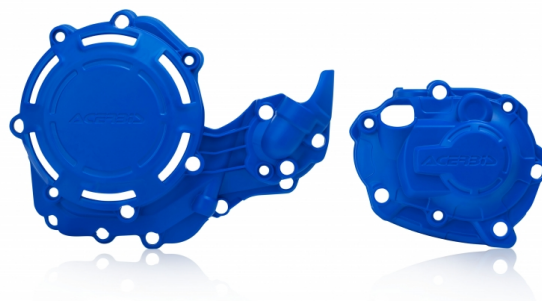


X-POWER YAMAHA

code: 279169

DETAILS

- Motor Crankcase and Ignition/Clutch covers that protect against wear from boots, impacts, dirt, mud, and other debris
- Right side: provides protection for the clutch cover, water pump, and lower casing
- Left side: provides protection to the ignition cover and clutch actuator
- Molded openings to access the filter cover and oil cap
- Easy to install by utilizing the original crankcase and ignition/clutch cover bolts
- Resistant to high temperatures
- Designed not to interfere with boots
- Compatible with ACERBIS skid plates



APPLICATIONS

- YAMAHA YZ 450 F 2018 2019 2020 2021 2022
- YAMAHA YZ 450 FX 2021 2022

BLUE



BLACK

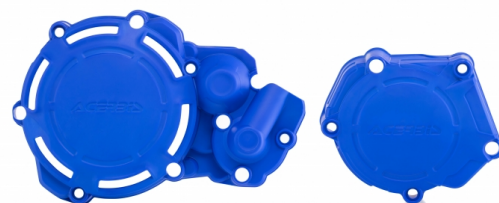


X-POWER YAMAHA

code: **278069**

DETAILS

- Motor Crankcase and Ignition/Clutch covers that protect against wear from boots, impacts, dirt, mud, and other debris
- Right side: provides protection for the clutch cover, water pump, and lower casing
- Left side: provides protection to the ignition cover and clutch actuator
- Molded openings to access the filter cover and oil cap
- Easy to install by utilizing the original crankcase and ignition/clutch cover bolts
- Resistant to high temperatures
- Designed not to interfere with boots
- Compatible with ACERBIS skid plates



APPLICATIONS

- FANTIC XX 250 2021 2022
- YAMAHA YZ 250 2005 2006 2007 2008 2009 2010 2011 2012 2013 2014 2015 2016 2017 2018 2019 2020 2021 2022

BLUE



BLACK

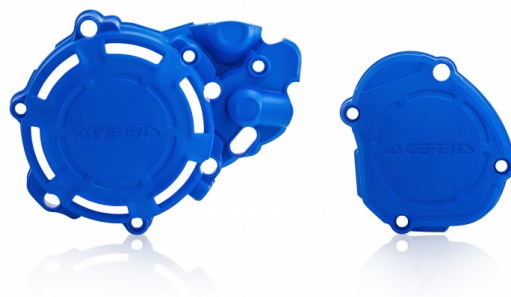


X-POWER YAMAHA

code: **278068**

DETAILS

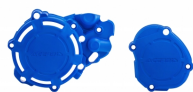
- Motor Crankcase and Ignition/Clutch covers that protect against wear from boots, impacts, dirt, mud, and other debris
- Right side: provides protection for the clutch cover, water pump, and lower casing
- Left side: provides protection to the ignition cover and clutch actuator
- Molded openings to access the filter cover and oil cap
- Easy to install by utilizing the original crankcase and ignition/clutch cover bolts
- Resistant to high temperatures
- Designed not to interfere with boots
- Compatible with ACERBIS skid plates



APPLICATIONS

- FANTIC XE 125 2021 2022
- FANTIC XX 125 2021 2022
- YAMAHA YZ 125 2005 2006 2007 2008 2009 2010 2011 2012 2013 2014 2015 2016 2017 2018 2019 2020 2021 2022

BLUE



BLACK



X-POWER BETA

code: **278067**

DETAILS

- Motor Crankcase and Ignition/Clutch covers that protect against wear from boots, impacts, dirt, mud, and other debris
- Right side: provides protection for the clutch cover, water pump, and lower casing
- Left side: provides protection to the ignition cover and clutch actuator
- Molded openings to access the filter cover and oil cap
- Easy to install by utilizing the original crankcase and ignition/clutch cover bolts
- Resistant to high temperatures
- Designed not to interfere with boots
- Compatible with ACERBIS skid plates



APPLICATIONS

- BETA RR 2T 250 2020 2021 2022
- BETA RR 2T 250 RC 2018 2019 2020 2021 2022
- BETA RR 2T 250 X-TRAINER 2018 2019 2020 2021 2022
- BETA RR 2T 300 2020 2021 2022
- BETA RR 2T 300 RC 2018 2019 2020 2021 2022
- BETA RR 2T 300 X-TRAINER 2018 2019 2020 2021 2022

BLACK



RED



X-POWER KTM/HUSQVARNA

code: **264551**

DETAILS

- Motor Crankcase and Ignition/Clutch covers that protect against wear from boots, impacts, dirt, mud, and other debris
- Right side: provides protection for the clutch cover, water pump, and lower casing
- Left side: provides protection to the ignition cover and clutch actuator
- Molded openings to access the filter cover and oil cap
- Easy to install by utilizing the original crankcase and ignition/clutch cover bolts
- Resistant to high temperatures
- Designed not to interfere with boots
- Compatible with ACERBIS skid plates

APPLICATIONS

- GAS GAS EX 250 2022
- GAS GAS EX 300 2021 2022
- GAS GAS MC 250 2022
- HUSQVARNA TC 250 2019 2020 2021 2022
- HUSQVARNA TE 250i 2020 2021 2022
- HUSQVARNA TE 300i 2020 2021 2022
- HUSQVARNA TX 300 I 2020 2021 2022
- KTM EXC 250 TPI 2020 2021 2022
- KTM EXC 300 TPI 2020 2021 2022
- KTM SX 250 2019 2020 2021 2022
- KTM XC 250 TPI 2020 2021 2022
- KTM XC 300 TPI 2020 2021 2022
- KTM XC-W 250 TPI 2020 2021 2022
- KTM XC-W 300 TPI 2020 2021 2022



SIZES

- 16

ORANGE 016



WHITE



BLACK



X-POWER KTM/HUSQVARNA

code: **273213**

DETAILS

- Motor Crankcase and Ignition/Clutch covers that protect against wear from boots, impacts, dirt, mud, and other debris
- Right side: provides protection for the clutch cover, water pump, and lower casing
- Left side: provides protection to the ignition cover and clutch actuator
- Molded openings to access the filter cover and oil cap
- Easy to install by utilizing the original crankcase and ignition/clutch cover bolts
- Resistant to high temperatures
- Designed not to interfere with boots
- Compatible with ACERBIS skid plates

APPLICATIONS

- GAS GAS EX 250 F 2021 2022
- GAS GAS EX 350 F 2021 2022
- GAS GAS MC 250 F 2021 2022
- GAS GAS MC 350 F 2022
- HUSQVARNA FC 250 2016 2017 2018 2019 2020 2021 2022
- HUSQVARNA FC 350 2016 2017 2018 2019 2020 2021 2022
- HUSQVARNA FX 350 2020 2021 2022
- KTM SX-F 250 2016 2017 2018 2019 2020 2021 2022
- KTM SX-F 350 2016 2017 2018 2019 2020 2021 2022
- KTM XC-F 250 2020 2021 2022
- KTM XC-F 350 2020 2021 2022



SIZES

- 16

ORANGE 016



WHITE



BLACK



RED



X-POWER KTM/HUSQVARNA

code: **273197**

DETAILS

- Motor Crankcase and Ignition/Clutch covers that protect against wear from boots, impacts, dirt, mud, and other debris
- Right side: provides protection for the clutch cover, water pump, and lower casing
- Left side: provides protection to the ignition cover and clutch actuator
- Molded openings to access the filter cover and oil cap
- Easy to install by utilizing the original crankcase and ignition/clutch cover bolts
- Resistant to high temperatures
- Designed not to interfere with boots
- Compatible with ACERBIS skid plates

APPLICATIONS

- GAS GAS EC 250 F 2021 2022
- GAS GAS EC 350 F 2021 2022
- HUSQVARNA FE 250 2017 2018 2019 2020 2021 2022
- HUSQVARNA FE 350 2017 2018 2019 2020 2021 2022
- HUSQVARNA FE 350 S 2022
- KTM EXC-F 250 2017 2018 2019 2020 2021 2022
- KTM EXC-F 350 2017 2018 2019 2020 2021 2022
- KTM FREERIDE 4T 2019 2020
- KTM XCF-W 350 2020 2021 2022



SIZES

- 16

ORANGE 016



WHITE



BLACK

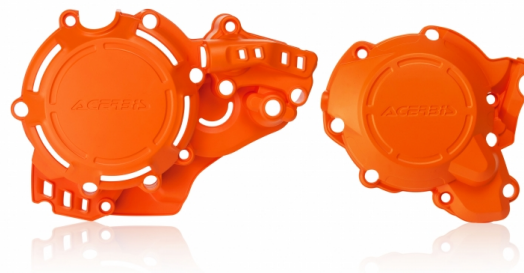


X-POWER KTM/HUSQVARNA

code: **272684**

DETAILS

- Motor Crankcase and Ignition/Clutch covers that protect against wear from boots, impacts, dirt, mud, and other debris
- Right side: provides protection for the clutch cover, water pump, and lower casing
- Left side: provides protection to the ignition cover and clutch actuator
- Molded openings to access the filter cover and oil cap
- Easy to install by utilizing the original crankcase and ignition/clutch cover bolts
- Resistant to high temperatures
- Designed not to interfere with boots
- Compatible with ACERBIS skid plates



APPLICATIONS

- HUSQVARNA TC 250 2017 2018
- HUSQVARNA TE 250 2017
- HUSQVARNA TE 250i 2018 2019
- HUSQVARNA TE 300 2017
- HUSQVARNA TE 300i 2018 2019
- KTM EXC 250 2017
- KTM EXC 250 TPI 2018 2019
- KTM EXC 300 2017
- KTM EXC 300 TPI 2018 2019
- KTM SX 250 2017 2018

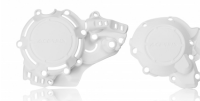
SIZES

- 16

ORANGE 016



WHITE



BLACK



X-POWER KTM/HUSQVARNA

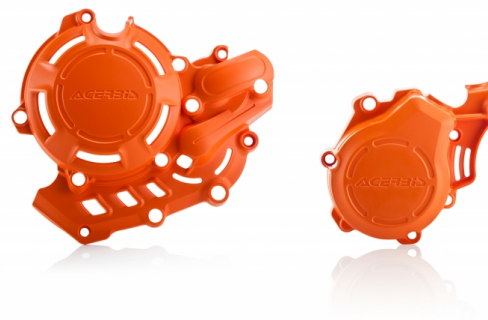
code: **270976**

DETAILS

- Motor Crankcase and Ignition/Clutch covers that protect against wear from boots, impacts, dirt, mud, and other debris
- Right side: provides protection for the clutch cover, water pump, and lower casing
- Left side: provides protection to the ignition cover and clutch actuator
- Molded openings to access the filter cover and oil cap
- Easy to install by utilizing the original crankcase and ignition/clutch cover bolts
- Resistant to high temperatures
- Designed not to interfere with boots
- Compatible with ACERBIS skid plates

APPLICATIONS

- GAS GAS EX 450 F 2021 2022
- HUSQVARNA FC 450 2016 2017 2018 2019 2020 2021 2022
- HUSQVARNA FE 450 2017 2018 2019 2020 2021 2022
- HUSQVARNA FE 450 S 2022
- HUSQVARNA FE 501 2019 2020 2021 2022
- HUSQVARNA FX 450 2020 2021 2022
- KTM EXC-F 450 2017 2018 2019 2020 2021 2022
- KTM EXC-F 500 2017 2018 2019 2020 2021 2022
- KTM SX-F 450 2016 2017 2018 2019 2020 2021 2022
- KTM XC-F 450 2020 2021 2022
- KTM XCF-W 500 2020 2021 2022



SIZES

- 16

ORANGE 016



SILVER



YELLOW 2



BLACK

