



SKID PLATE FOR BETA

298548



298548-32



298548-12

FEATURES

Latest generation sub-engine made of high-strength plastic with integrated fin

Fin designed to protect the shock absorber linkage from impacts, mud and sand allows you to slide easily over natural obstacles (whoops, stones, logs) ensuring a smooth ride

The design ensures maximum adherence to the link

6 mm thickness for maximum protection of the frame and engine

Extended protection areas on the side casings, on the valve adjustment cover and in the footrest frame area

Presence of unloading areas to give more lightness, ventilation and facilitate washing operations inside the sub-engine

Design studied to reduce the entry of mud and debris into the engine

Compatible with simultaneous use of X-POWER

Using the two screws supplied and using the original bike attachments, it is possible to fasten and remove the sub-engine quickly.

Weight: 885g

PRODUCT DETAILS

96% Plastic | 4% Other

Made In: Italy

APPLICATIONS

BETA RR 250 2T RACING 2024 | BETA RR 300 2T RACING 2024

SKID PLATE FOR BETA 280195



280195-12



280195-32

FEATURES

CONSTRUCTION AND DESIGN:

Latest generation sub-engine made of high-strength plastic with integrated fin
Fin designed to protect the shock absorber linkage from impacts, mud and sand allows you to slide easily over natural obstacles (whoops, stones, logs) ensuring a smooth ride
The design ensures maximum adherence to the link
6 mm thickness for maximum protection of the frame and engine
Extended protection areas on the side casings, on the valve adjustment cover and in the footrest frame area

Presence of unloading areas to give more lightness, ventilation and facilitate washing operations inside the sub-engine
Design studied to reduce the entry of mud and debris into the engine
Compatible with simultaneous use of X-POWER
Using the two screws supplied and using the original bike attachments, it is possible to fasten and remove the sub-engine quickly.

PRODUCT DETAILS

NYLON 96% | Others 4%

Made In: Italy

APPLICATIONS

BETA RR 250 2T 2020 2021 2022 2023 2024 | BETA RR 250 2T RACING 2020 2021 2022 2023 | BETA RR 300 2T 2020 2021 2022 2023 2024 |
BETA RR 300 2T RACING 2020 2021 2022 2023



UNIVERSAL SKID
PLATE LINK GUARD
278059



278059-22



278059-62



278059-55



278059-12



278059-32



278059-72

FEATURES

Universal link guard suitable for every Acerbis Skidplate and most of the OEM ones
Printed fin designed to protect the suspension link from impacts, mud and sand
It allows the bike to easily slide over natural obstacles (whoops, rocks, trunks)

Its design ensures the best cover around the link, thus guaranteeing a clean ride
Clamping screws included

SKID PLATE FOR BETA
278058



278058-12



278058-32

APPLICATIONS

BETA RR 250 2T 2018 2019 | BETA RR 300 2T 2018 2019

SKID PLATE FOR BETA
268877



268877-12



268877-32

APPLICATIONS

BETA RR 250 2T 2018 2019 | BETA RR 300 2T 2018 2019



SKID PLATE FOR HONDA TRANSALP 298486



FEATURES

Latest-generation skid plate that allows it to slide smoothly over natural obstacles (whoops, stones, logs) ensuring a smooth ride. It offers maximum protection for the chassis and engine. Extended protection areas on the side crankcases, water pump and footpeg areas of the frame. Presence of exhaust areas to give more lightness, ventilation and facilitate washing operations inside the under-engine

Design to reduce mud and debris ingress
Compatible with simultaneous use of Acerbis x-power (ignition and clutch cover protection)
Mounting kit included
Weight: 2060g
Not compatible with main stand

PRODUCT DETAILS

82% Plastic | 14% Steel | 4% Others

Made In: Italy

APPLICATIONS

HONDA TRANSALP XL750 2023 2024

PRODUCTS RELATED



ENDURANCE-X TRANSALP
HANDGUARDS

■ 090



298341
FUEL TANK FOR HONDA
TRANSALP 23L

■ 090.700



298366
X-GRIP FRAME PROTECTOR
FOR HONDA TRANSALP

■ 090

■ 319

NEW PRODUCTS / NEW PRODUCTS

SKID PLATE FOR HONDA TRANSALP

ACERBIS



298368
X-POWER FOR HONDA
TRANSALP

■ 090



298339
FORK SHOE COVER FOR
HONDA TRANSALP

■ 090



298046
ENDURANCE-X HANDGUARDS

- | | |
|-------|-------|
| ■ 090 | ■ 209 |
| ■ 237 | ■ 245 |
| ■ 279 | ■ 315 |
| ■ 343 | ■ 349 |
| ■ 377 | ■ 848 |



263466
X-FACTORY HANDGUARDS

- | | |
|-------|-------|
| ■ 090 | ■ 203 |
| ■ 209 | ■ 229 |
| ■ 231 | ■ 232 |
| ■ 237 | ■ 239 |
| ■ 245 | ■ 251 |
| ■ 279 | ■ 313 |
| ■ 315 | ■ 321 |
| ■ 323 | ■ 325 |
| ■ 335 | ■ 343 |
| ■ 349 | ■ 377 |

SKID PLATE FOR HONDA 298481



298481-12



298481-32

FEATURES

CONSTRUCTION AND DESIGN:

Latest generation sub-engine made of high-strength plastic with integrated fin

Fin designed to protect the shock absorber linkage from impacts, mud and sand allows you to slide easily over natural obstacles (whoops, stones, logs) ensuring a smooth ride

The design ensures maximum adherence to the link

6 mm thickness for maximum protection of the frame and engine

Extended protection areas on the side casings

Presence of unloading areas to give more lightness, ventilation and facilitate washing operations inside the sub-engine

Design studied to reduce the entry of mud and debris into the engine

Compatible with simultaneous use of X-POWER

Using the two screws supplied and using the original bike attachments, it is possible to fasten and remove the sub-engine quickly.

PRODUCT DETAILS

POLYPROPYLENE 75% | RUBBER 21% | OTHERS 4%

Made In: Italy

APPLICATIONS

HONDA CRF 250 R 2022 2023 2024 | HONDA CRF 250 RX 2022 2023 2024 | HONDA CRF 250 RX ENDURO 2022 2023 2024 | HONDA CRF 250 RX ENDURO SPECIAL 2022 2023 2024 | HONDA CRF 300 RX 2022 2023 2024 | HONDA CRF 300 RX ENDURO SPECIAL 2022 2023 2024

SKID PLATE FOR
HONDA
294528



294528-12



294528-32

FEATURES

CONSTRUCTION AND DESIGN:

Design studied for optimal protection of the frame and engine.
The impact resistant material effectively protects against stones, earth and mud.
Flexible, lightweight plastic reduces vibration and surface damage to the frame and engine.

The air intakes are designed to ensure excellent ventilation of the engine, while reducing the entry of gravel, earth and mud.
Intuitive and quick assembly / disassembly for normal engine maintenance and washing operations.

APPLICATIONS

HONDA CRF 250 L (JAPAN) 2021 2022 2023 2024 | HONDA CRF 300 L 2021 2022 2023 2024

SKID PLATE FOR HONDA 289560



289560-12



289560-32

FEATURES

Last generation skid plate with built-in fin
Printed fin designed to protect the suspension link from impacts, mud and sand. It allows the bike to easily slide over natural obstacles (whoops, rocks, trunks) Its design ensures the best cover around the link, thus guaranteeing a clean ride
Plastic 6mm thick for the best frame and engine protection
Protection areas extended over the engine covers, on the water pump and on the foot peg mounts

Discharge areas to improve lightness and airflow and to ease the cleaning process behind the skid plate
Design developed to reduce the presence of mud and debris around the engine
Possibility to combine its use with X-POWER (clutch and ignition cover protection)
Carbon look refinishing
Easy mounting on the original fastenings of the bike

PRODUCT DETAILS

Polypropylene 75% | Rubber 20% | Altri 5%

Made In: Italy

APPLICATIONS

HONDA CRF 450 R 2021 2022 2023 2024 | HONDA CRF 450 RX 2021 2022 2023 2024

**SKID PLATE FOR
HONDA**
263073



263073-12

FEATURES

Enduro Style

APPLICATIONS

HONDA CRF 250 R 2018 2019 2020 2021 | HONDA CRF 250 RX 2019 2020 2021 | HONDA CRF 300 RX 2019 2020 2021

**SKID PLATE FOR
HONDA**
267618



267618-12

APPLICATIONS

HONDA CRF 250 L-M 2013 2014 2015 2016 2017 2018 2019 2020

**SKID PLATE FOR
HONDA**
216022



216022-12

APPLICATIONS

HONDA CRF 250 R 2010 2011 2012 2013 2014 2015 2016 2017 | HONDA CRF 450 R 2009 2010 2011 2012 2013 2014 2015 2016



**SKID PLATE FOR
HONDA**
218834



APPLICATIONS

HONDA CRF 250 R 2010 2011 2012 2013 2014 2015 2016 2017 | HONDA CRF 450 R 2009 2010 2011 2012 2013 2014 2015 2016

**SKID PLATE FOR
HONDA**
212569



212569-

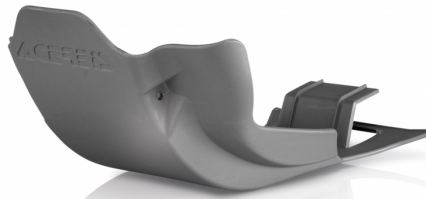


212569-12

APPLICATIONS

HONDA CRF 250 R 2004 2005 2006 2007 2008 2009 | HONDA CRF 250 X 2004 2005 2006 2007 2008 2009 2010 2011 2012 2013 2014 2015 2016 2017

**SKID PLATE FOR
HONDA**
212567



212567-



212567-12

APPLICATIONS

HONDA CRF 450 R 2005 2006 2007 2008 | HONDA CRF 450 X 2005 2006 2007 2008 2009 2010 2011 2012 2013 2014 2015 2016

SKID PLATE FOR
KTM/HUSQVARNA/GAS
GAS
298146



298146-



298146-62



298146-12

FEATURES

Latest generation sub-engine with integrated fin
Co-molded fin designed to protect the shock absorber linkage from impact, mud and sand. Allows easy sliding over natural obstacles (whoops, stones, logs) ensuring a smooth ride.
Design ensures maximum grip on the link
6mm thickness for maximum frame and engine protection
Extended protection areas on the side crankcases, water pump, and in the areas of the frame footrest area
Presence of drainage areas to impart more lightness, aeration, and facilitate washing operations inside the sub-engine

Design studied to reduce the ingress of mud and debris
Compatible with simultaneous use of X-Power (Ignition and Clutch Crankcase Protection)
Protection of the side crankcases, on the water pump and in the areas of the frame footrest area
It is easily mounted by taking advantage of the frame sleeper near the mono-shock absorber and through two supplied screws that use the two original slots in the front
Possibility of simultaneous use with x-power
Two-tone nameplate with logo
Weight: 700g

PRODUCT DETAILS

98% Polypropylene | 2% Other

Made In: Italy

APPLICATIONS

GAS GAS EC 250 2024 | GAS GAS EC 300 2024 | GAS GAS EX 250 2024 | GAS GAS EX 300 2024 | GAS GAS MC 250 2024 | HUSQVARNA TC 250 2023 2024 | HUSQVARNA TE 250 2024 | HUSQVARNA TE 300 2024 | HUSQVARNA TE 300 PRO 2024 | HUSQVARNA TX 300 2023 2024 | KTM SX 250 2023 2024 | KTM SX 300 2023 2024 | KTM XC 250 2023 2024 | KTM XC 300 2023 2024

SIZES

SKID PLATES / HUSQVARNA
SKID PLATE FOR KTM/HUSQVARNA/GAS GAS



SKID PLATE FOR
KTM/HUSQVARNA/GAS
GAS
297761



297761-



297761-62



297761-12

FEATURES

CONSTRUCTION AND DESIGN:

Design designed for optimal protection of the chassis and motor.
Fin designed to protect the shock absorber linkage from impacts, mud and sand. It allows you to easily slide over natural obstacles (Whoops, stones, logs) ensuring a smooth ride. The design ensures maximum adherence to the link
Impact resistant material effectively protects against stones, earth and mud.
Flexible and lightweight plastic reduces vibration and surface damage to chassis and engine
The air intakes are designed to give more lightness, aeration and facilitate the washing operations inside the sub-engine, reducing the entrance of gravel, earth and mud.

Exploiting the original attacks of the bike the assembly/ disassembly is intuitive and to facilitate the normal maintenance and washing of the engine.

Extended protection areas on the side housings, on the water pump and in the chassis areas

Compatible with simultaneous use of X-Power (Ignition and clutch housing protection)

PRODUCT DETAILS

Nyoln 96% | Others 4%

Made In: Italy

APPLICATIONS

GAS GAS EC 250 F 2024 | GAS GAS EC 350 F 2024 | GAS GAS EX 250 F 2024 | GAS GAS EX 350 F 2024 | GAS GAS MC 250 F 2024 | GAS GAS MC 350 F 2024 | HUSQVARNA FC 250 2023 2024 | HUSQVARNA FC 350 2023 2024 | HUSQVARNA FE 250 2024 | HUSQVARNA FE 350 2024 | HUSQVARNA FE 350 PRO 2024 | HUSQVARNA FE 350 S 2024 | HUSQVARNA FE 350 W 2024 | HUSQVARNA FX 350 2023 2024 | KTM SX-F 250 2023 2024 | KTM SX-F 350 2023 2024 | KTM XC-F 250 2023 2024 | KTM XC-F 350 2023 2024

SIZES

16



**SKID PLATE FOR
KTM/HUSQVARNA/GAS
GAS
298327**



298327-



298327-12

FEATURES

Latest generation skid plate with integrated fin
Fin designed to protect the linkage of the shock from impacts, mud and sand. It allows you to easily slide over natural obstacles (Whoops, stones, logs) ensuring a smooth ride. The design ensures maximum adherence to the link
It offers maximum protection to the chassis and motor.
Extended protection areas on the side housings, on the water pump and in the chassis areas
Presence of exhaust areas to give more lightness, ventilation and facilitate the washing operations inside the skid plate

Design designed to reduce the ingress of mud and debris
Protection of the side housings, on the water pump and in the areas of the chassis
Easily mounts thanks the front holes and the original rear seats, with the addition of an additional support guaranteed by two plastic hooks
Two-tone label with logo

APPLICATIONS

GAS GAS ES 700 2022 2023 2024 | GAS GAS SM 700 2022 2023 2024 | HUSQVARNA 701 ENDURO 2016 2017 2018 2019 2020 2021 2022 2023 2024 | HUSQVARNA 701 SUPERMOTO 2016 2017 2018 2019 2020 2021 2022 2023 2024 | KTM 690 ENDURO R 2019 2020 2021 2022 2023 2024 | KTM 690 SMC R 2019 2020 2021 2022 2023 2024

SIZES

SKID PLATE
298145



298145-12



298145-



298145-62

FEATURES

Latest-generation skid plate with integrated fin
Co-moulded fin designed to protect the shock absorber linkage from impacts, mud and sand. It allows easy sliding over natural obstacles (whoops, stones, logs) ensuring a smooth ride. Design ensures maximum linkage grip
6mm thickness for maximum chassis and engine protection
Extended protection areas on the side casings, water pump and footpeg areas of the chassis
Presence of exhaust areas to give more lightness, ventilation and facilitate washing inside the skid plate

Design to reduce mud and debris ingress
Compatible with simultaneous use of X-Power (ignition crankcase and clutch protection)
Protection of the side crankcases, on the water pump and in the frame areas around the footrests
It is easily mounted by using the frame cross-member near the single shock absorber and by means of two supplied screws using the two original slots at the front
Two-tone logo plate
Weight: 700g

PRODUCT DETAILS

98% Polypropylene | 2% Others

Made In: Italy

APPLICATIONS

GAS GAS MC 125 2024 | HUSQVARNA TC 125 2023 2024 | HUSQVARNA TE 150 2024 | KTM SX 125 2023 2024 | KTM XC 125 2023 2024

SIZES

16

**SKID PLATE FOR
HUSQVARNA**
279166



279166-232



279166-315

APPLICATIONS

HUSQVARNA FE 450 2020 2021 2022 2023 | HUSQVARNA FE 501 2020 2021 2022 2023 | HUSQVARNA FE 501 S 2022 2023

**SKID PLATE FOR
HUSQVARNA/GAS GAS**
279165



279165-237



279165-315

APPLICATIONS

GAS GAS EC 250 F 2021 2022 2023 | GAS GAS EC 350 F 2021 2022 2023 | HUSQVARNA FE 250 2020 2021 2022 2023 | HUSQVARNA FE 350 2020 2021 2022 2023 | HUSQVARNA FE 350 S 2022 2023

**SKID PLATE FOR FOR
KTM/HUSQVARNA/GAS
GAS
279167**



279167-315



279167-237

APPLICATIONS

GAS GAS EC 250 2021 2022 2023 | GAS GAS EC 300 2021 2022 2023 | HUSQVARNA TE 250I 2020 2021 2022 2023 | HUSQVARNA TE 300I 2020 2021 2022 2023 | KTM XC-W 150 TPI 2020 2021 2022 2023

**SKID PLATE FOR
KTM/HUSQVARNA/GAS
GAS
273346**



273346-203



273346-232



273346-



273346-315

APPLICATIONS

GAS GAS EX 450 F 2021 2022 2023 | GAS GAS MC 450 F 2021 2022 2023 | HUSQVARNA FC 450 2019 2020 2021 2022 | HUSQVARNA FX 450 2020 2021 2022 | KTM SX-F 450 2019 2020 2021 2022 | KTM XC-F 450 2019 2020 2021 2022

SKID PLATE FOR
KTM/HUSQVARNA/GAS
GAS
273636



273636-



273636-237



273636-



273636-315

FEATURES

Last generation skid plate with built-in fin
Printed fin designed to protect the suspension link from impacts, mud and sand. It allows the bike to easily slide over natural obstacles (whoops, rocks, trunks) Its design ensures the best cover around the link, thus guaranteeing a clean ride
Plastic 6mm thick for the best frame and engine protection
Protection areas extended over the engine covers, on the water pump and on the foot peg mounts

Discharge areas to improve lightness and airflow and to ease the cleaning process behind the skid plate
Design developed to reduce the presence of mud and debris around the engine
Possibility to combine its use with X-POWER (clutch and ignition cover protection)
Carbon look refinishing
Easy mounting on the original fastenings of the bike

PRODUCT DETAILS

Skid plate realised in two joined sections: | Highly impact-resistant plastic skid plate | Fin for suspension link protection: blend rubber + plastic which allows resistance to impacts and better elasticity

Made In: Italy

APPLICATIONS

GAS GAS EX 250 2022 2023 | GAS GAS EX 300 2021 2022 2023 | GAS GAS MC 250 2022 2023 | HUSQVARNA TC 250 2019 2020 2021 2022 | HUSQVARNA TX 300 2020 2021 2022 | KTM SX 250 2019 2020 2021 2022 | KTM XC 250 2019 2023 2024 | KTM XC 250 TPI 2020 2021 2022 | KTM XC 300 2019 | KTM XC 300 TPI 2020 2021 2022

**SKID PLATE FOR
KTM/HUSQVARNA/GAS
GAS
268603**



268603-



268603-42



268603-12

APPLICATIONS

GAS GAS MC 85 2021 2022 2023 2024 | HUSQVARNA TC 85 2018 2019 2020 2021 2022 2023 2024 | KTM SX 85 2018 2019 2020 2021 2022 2023 2024

**SKID PLATE FOR
KTM/HUSQVARNA
268879**



268879-12



268879-42

APPLICATIONS

HUSQVARNA FE 250 2017 2018 2019 | HUSQVARNA FE 350 2017 2018 2019 | KTM EXC-F 250 2017 2018 2019 | KTM EXC-F 350 2017 2018 2019

**SKID PLATE FOR
KTM/HUSQVARNA**
263056



263056-12

APPLICATIONS

HUSQVARNA TC 250 2017 2018 | KTM SX 250 2017 2018

**SKID PLATE FOR
KTM/HUSQVARNA**
263054



263054-42



263054-12

APPLICATIONS

HUSQVARNA TC 85 2014 2015 2016 2017 | KTM SX 85 2013 2014 2015 2016 2017

**SKID PLATE FOR
KTM/HUSQVARNA/GAS
GAS
263057**



263057-12

APPLICATIONS

GAS GAS MC 125 2021 2022 2023 | HUSQVARNA TC 125 2016 2017 2018 2019 2020 2021 2022 | HUSQVARNA TE 150I 2020 2021 2022 2023 | HUSQVARNA TX 125 2017 2018 2019 | KTM EXC 150 TPI 2020 2021 2022 2023 | KTM SX 125 2016 2017 2018 2019 2020 2021 2022 | KTM SX 150 2016 2017 2018 2019 2020 | KTM XC 125 2020 2021 2022 | KTM XC-W 125 2017 2018 2019 | KTM XC-W 150 TPI 2019 2020 2021 2022 2023

**SKID PLATE FOR
KTM/HUSQVARNA
263058**



263058-



263058-42



263058-12

APPLICATIONS

HUSQVARNA TE 250 2017 | HUSQVARNA TE 250I 2018 2019 | HUSQVARNA TE 300 2017 | HUSQVARNA TE 300I 2018 2019 | KTM EXC 250 2017
| KTM EXC 250 TPI 2018 2019 | KTM EXC 300 2017 | KTM EXC 300 TPI 2018 2019 | KTM XC-W 250 TPI 2019 | KTM XC-W 300 TPI 2019

**SKID PLATE FOR
KTM/HUSQVARNA
244942**



244942-



244942-12



244942-



244942-232

APPLICATIONS

HUSQVARNA FC 450 2016 2017 2018 | HUSQVARNA FE 450 2017 2018 2019 | HUSQVARNA FE 501 2017 2018 2019 | KTM SX-F 450 2016 2017 2018

**SKID PLATE FOR
KTM/HUSQVARNA
242116**



242116-



242116-42

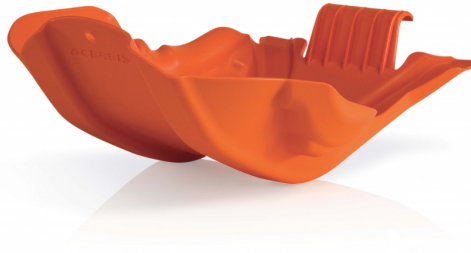


242116-12

APPLICATIONS

HUSQVARNA FC 250 2016 2017 2018 | HUSQVARNA FC 350 2016 2017 2018 | KTM SX-F 250 2016 2017 2018 | KTM SX-F 350 2016 2017 2018

**SKID PLATE FOR
KTM/HUSQVARNA**
225029



225029-22

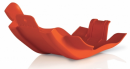
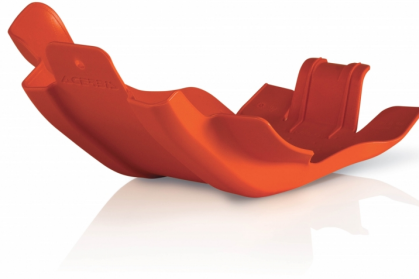


225029-12

APPLICATIONS

HUSQVARNA FC 450 2014 2015 | HUSQVARNA FE 450 2014 2015 2016 | HUSQVARNA FE 501 2014 2015 2016 | KTM EXC-F 450 2012 2013 2014 2015 2016 | KTM EXC-F 500 2012 2013 2014 2015 2016 | KTM SX-F 450 2013 2014 2015

**SKID PLATE FOR
KTM/HUSQVARNA
225027**



225027-22



225027-12

APPLICATIONS

HUSQVARNA FE 250 2014 2015 2016 | HUSQVARNA FE 350 2014 2015 2016 | KTM EXC-F 250 2014 2015 2016 | KTM EXC-F 350 2012 2013 2014 2015 2016

**SKID PLATE FOR
KTM/HUSQVARNA**
224413



224413-12

APPLICATIONS

HUSQVARNA TC 125 2014 2015 | HUSQVARNA TE 125 2014 2015 2016 | KTM EXC 125 2012 2013 2014 2015 2016 | KTM EXC 200 2012 2013 2014 2015 2016 | KTM SX 125 2011 2012 2013 2014 2015 | KTM SX 150 2011 2012 2013 2014 2015

**SKID PLATE FOR
KTM/HUSQVARNA
221504**



221504-22



221504-12

APPLICATIONS

HUSQVARNA FC 250 2014 2015 | HUSQVARNA FC 350 2014 2015 | KTM SX-F 250 2013 2014 2015 | KTM SX-F 350 2011 2012 2013 2014 2015

**SKID PLATE FOR
KTM/HUSQVARNA
216023**



216023-22



216023-12

APPLICATIONS

HUSQVARNA TC 250 2014 2015 2016 | HUSQVARNA TE 250 2014 2015 2016 | HUSQVARNA TE 300 2014 2015 2016 | KTM EXC 250 2006 2007 2008 2009 2010 2011 2012 2013 2014 2015 2016 | KTM EXC 300 2006 2007 2008 2009 2010 2011 2012 2013 2014 2015 2016 | KTM SX 250 2006 2007 2008 2009 2010 2011 2012 2013 2014 2015 2016



**SKID PLATE FOR
KAWASAKI**
298365



298365-72



298365-12

APPLICATIONS

KAWASAKI KX 450 2024 | KAWASAKI KX 450 X 2024

SKID PLATE FOR
KAWASAKI
273492



273492-315



273492-

APPLICATIONS

KAWASAKI KX 250 4T 2021 2022 2023 2024 | KAWASAKI KX 250 X 2021 2022 2023 2024 | KAWASAKI KX 300 X 2024 | KAWASAKI KX 450 2020 2021 2022 2023 | KAWASAKI KX 450 F 2019 | KAWASAKI KX 450 X 2021 2022 2023

PRODUCTS RELATED



273629
FULL PLASTIC KIT FOR
KAWASAKI

- | | |
|----------------------------------|------------------------------|
| <input type="checkbox"/> 030 | <input type="checkbox"/> 070 |
| <input type="checkbox"/> 072 | <input type="checkbox"/> 083 |
| <input type="checkbox"/> 090 | <input type="checkbox"/> 092 |
| <input type="checkbox"/> 130 | <input type="checkbox"/> 132 |
| <input type="checkbox"/> 325 | <input type="checkbox"/> 553 |
| <input type="checkbox"/> 553.020 | |

**SKID PLATE FOR
KAWASAKI**
264246



264246-



264246-12

APPLICATIONS

KAWASAKI KX 250 4T 2020 | KAWASAKI KX 250 F 2017 2018 2019

**SKID PLATE FOR
KAWASAKI**
246602



246602-



246602-12

APPLICATIONS

KAWASAKI KX 450 F 2016 2017 2018

**SKID PLATE FOR
KAWASAKI**
218833



218833-12

APPLICATIONS

KAWASAKI KX 250 4T 2020 | KAWASAKI KX 250 F 2009 2010 2011 2012 2013 2014 2015 2016 2017 2018 2019

**SKID PLATE FOR
KAWASAKI**
216021



216021-12

APPLICATIONS

KAWASAKI KX 450 F 2009 2010 2011 2012 2013 2014 2015

**SKID PLATE FOR
KAWASAKI**
216020



216020-12

APPLICATIONS

KAWASAKI KX 250 F 2009 2010 2011 2012 2013 2014 2015 2016

**SKID PLATE FOR
KAWASAKI/YAMAHA
212568**



212568-12

APPLICATIONS

KAWASAKI KLX 450 2008 2009 2010 2011 2012 2013 2014 2015 2016 2017 2018 | YAMAHA WR 250 F 2007 2008 2009 2010 2011 2012 2013 2014 2015 2016 2017 2018 2019 | YAMAHA WR 450 F 2007 2008 2009 2010 2011 2012 2013 2014 2015 2016 2017 2018



SKID PLATE FOR
SUZUKI
298335



298335-12

FEATURES

Skid plate with integrated fin
Fin designed to protect the shock linkage from impacts, mud and sand. it allows it to glide smoothly over natural obstacles (whoops, rocks, logs) ensuring a smooth ride. the design ensures maximum linkage grip
Offers maximum protection to the chassis and engine.
Extended protection areas on the side crankcases, water pump and footpeg area frame areas

Presence of exhaust areas to give more lightness, aeration and facilitate washing operations inside the under-engine
Design designed to reduce the entry of mud and debris
Compatible with simultaneous use of acerbis x-power (ignition and clutch crankcase protection)
Weight 1000g

PRODUCT DETAILS

98% Plastic | 2% Others

Made In: Italy

APPLICATIONS

SUZUKI DRZ 400 2000 2001 2002 2003 2004 2005 2006 2007 2008 2009 2010 2011 2012 2013 2014 2016 2017 2018 2019 2020 2021 2022 2023 | SUZUKI DRZ 400 SM 2000 2001 2002 2003 2004 2005 2006 2007 2008 2009 2010 2011 2012 2013 2014 2016 2017 2018 2019 2020 2021 2022 2023 | SUZUKI DRZ 400E 2000 2001 2002 2003 2004 2005 2006 2007 2008 2009 2010 2011 2012 2013 2014 2016 2017 2018 2019 2020 2021 2022 2023 | SUZUKI DRZ 400S 2000 2001 2002 2003 2004 2005 2006 2007 2008 2009 2010 2011 2012 2013 2014 2016 2017 2018 2019 2020 2021 2022 2023

**SKID PLATE FOR
SUZUKI**
274267



274267-315

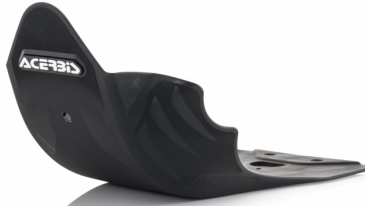


274267-

APPLICATIONS

SUZUKI RM-Z 250 2019 2020 2021 2022 2023 2024

**SKID PLATE FOR
SUZUKI**
268659



268659-12

APPLICATIONS

SUZUKI RM-Z 450 2018 2019 2020 2021 2022 2023 2024

SKID PLATE FOR
SUZUKI
242115



242115-12

APPLICATIONS

SUZUKI DR 650 1996 1997 1998 1999 2000 2001 2002 2003 2004 2005 2006 2007 2008 2009 2010 2011 2012 2013 2014 2015 2016 2017 2018 2019 2020 2021 2022 2023

PRODUCTS RELATED



225036
FUEL TANK FOR SUZUKI 20L

- 030.700
- 040.700
- 070.700
- 090.700
- 120.700

**SKID PLATE FOR
SUZUKI**
221503



221503-12

APPLICATIONS

SUZUKI RM-Z 250 2010 2011 2012 2013 2014 2015 2016 2017 2018

**SKID PLATE FOR
SUZUKI**
221502



221502-12

APPLICATIONS

SUZUKI RM-Z 450 2008 2009 2010 2011 2012 2013 2014 2015 2016 2017



**SKID PLATE FOR
KTM-HUSQUARNA-GAS
GAS 65
298547**



298547-12



298547-

FEATURES

Next-generation skid plate developed to provide maximum protection of the areas of greatest impact.
Allows smooth sliding over obstacles found on motocross tracks (whoops, boulders) ensuring a smooth ride.
Extended protection areas on the side crankcases, water pump and footpeg area

Presence of exhaust areas to give more lightness, aeration and facilitate washing operations inside the skid plate
Designed to reduce the entry of mud and debris
Weight: 400g

PRODUCT DETAILS

78% Plastic | 20% Steel | 2% Other

Made In: Italy

APPLICATIONS

GAS GAS MC 65 2024 | HUSQVARNA TC 65 2024 | KTM SX 65 2024

SIZES

16



SKID PLATE FOR KTM
298324



298324-



298324-12

APPLICATIONS

KTM EXC-F 450 2024 | KTM EXC-F 500 2024 | KTM XCF-W 450 2024 | KTM XW-F 500 2024

SIZES

16



SKID PLATE FOR KTM 298322



298322-



298322-12

FEATURES

Skid plate of the latest generation that allows it to slide smoothly over natural obstacles (whoops, rocks, logs) ensuring a smooth ride. Provides maximum protection for the frame and engine. Extended protection areas on the side crankcases, water pump and footpeg area frame areas. Presence of exhaust areas to give more lightness, aeration and facilitate washing operations inside the under-engine

Designed to reduce mud and debris ingress
Compatible with simultaneous use of Acerbis X-Power (Ignition and clutch crankcase protection)
Easily mounted by taking advantage of the frame crossmember near the single shock and via 2 supplied screws using the two original slots in the front
Weight: 650g

APPLICATIONS

KTM EXC 250 2024 | KTM EXC 300 2024 | KTM XC-W 250 2024 | KTM XC-W 300 2024

SIZES



SKID PLATE FOR KTM
298321



298321-



298321-12

APPLICATIONS

KTM EXC 150 2024 | KTM XC-W 150 2024

SIZES

16

SKID PLATE FOR KTM 298325



298325-



298325-12

FEATURES

Skid plate of the latest generation that allows it to glide smoothly over natural obstacles (stones, logs) ensuring a smooth ride. Provides maximum protection to the frame and engine. Extensive protection areas on the side crankcases, water pump and footpeg area frame areas. Presence of exhaust areas to give more lightness, aeration and facilitate washing operations inside the under-engine.

Designed to reduce mud and debris ingress
Compatible with simultaneous use of Acerbis X-Power (Ignition and clutch housing protection)
Mounts easily by taking advantage of the four original holes on the frame
Weight: 650g

APPLICATIONS

KTM EXC-F 250 2024 | KTM EXC-F 350 2024 | KTM XW-F 350 2024

SIZES

16



**SKID PLATE FOR
KTM/HUSQVARNA/GAS
GAS
298327**



298327-



298327-12

FEATURES

Latest generation skid plate with integrated fin
Fin designed to protect the linkage of the shock from impacts, mud and sand. It allows you to easily slide over natural obstacles (Whoops, stones, logs) ensuring a smooth ride. The design ensures maximum adherence to the link
It offers maximum protection to the chassis and motor.
Extended protection areas on the side housings, on the water pump and in the chassis areas
Presence of exhaust areas to give more lightness, ventilation and facilitate the washing operations inside the skid plate

Design designed to reduce the ingress of mud and debris
Protection of the side housings, on the water pump and in the areas of the chassis
Easily mounts thanks the front holes and the original rear seats, with the addition of an additional support guaranteed by two plastic hooks
Two-tone label with logo

APPLICATIONS

GAS GAS ES 700 2022 2023 2024 | GAS GAS SM 700 2022 2023 2024 | HUSQVARNA 701 ENDURO 2016 2017 2018 2019 2020 2021 2022 2023 2024 | HUSQVARNA 701 SUPERMOTO 2016 2017 2018 2019 2020 2021 2022 2023 2024 | KTM 690 ENDURO R 2019 2020 2021 2022 2023 2024 | KTM 690 SMC R 2019 2020 2021 2022 2023 2024

SIZES

SKID PLATE FOR
KTM/HUSQVARNA/GAS
GAS
298146



298146-



298146-62



298146-12

FEATURES

Latest generation sub-engine with integrated fin
Co-molded fin designed to protect the shock absorber linkage from impact, mud and sand. Allows easy sliding over natural obstacles (whoops, stones, logs) ensuring a smooth ride.
Design ensures maximum grip on the link
6mm thickness for maximum frame and engine protection
Extended protection areas on the side crankcases, water pump, and in the areas of the frame footrest area
Presence of drainage areas to impart more lightness, aeration, and facilitate washing operations inside the sub-engine

Design studied to reduce the ingress of mud and debris
Compatible with simultaneous use of X-Power (Ignition and Clutch Crankcase Protection)
Protection of the side crankcases, on the water pump and in the areas of the frame footrest area
It is easily mounted by taking advantage of the frame sleeper near the mono-shock absorber and through two supplied screws that use the two original slots in the front
Possibility of simultaneous use with x-power
Two-tone nameplate with logo
Weight: 700g

PRODUCT DETAILS

98% Polypropylene | 2% Other

Made In: Italy

APPLICATIONS

GAS GAS EC 250 2024 | GAS GAS EC 300 2024 | GAS GAS EX 250 2024 | GAS GAS EX 300 2024 | GAS GAS MC 250 2024 | HUSQVARNA TC 250 2023 2024 | HUSQVARNA TE 250 2024 | HUSQVARNA TE 300 2024 | HUSQVARNA TE 300 PRO 2024 | HUSQVARNA TX 300 2023 2024 | KTM SX 250 2023 2024 | KTM SX 300 2023 2024 | KTM XC 250 2023 2024 | KTM XC 300 2023 2024

SIZES

SKID PLATES / HUSQVARNA
SKID PLATE FOR KTM/HUSQVARNA/GAS GAS



SKID PLATE
298145



298145-12



298145-



298145-62

FEATURES

Latest-generation skid plate with integrated fin
Co-moulded fin designed to protect the shock absorber linkage from impacts, mud and sand. It allows easy sliding over natural obstacles (whoops, stones, logs) ensuring a smooth ride. Design ensures maximum linkage grip
6mm thickness for maximum chassis and engine protection
Extended protection areas on the side casings, water pump and footpeg areas of the chassis
Presence of exhaust areas to give more lightness, ventilation and facilitate washing inside the skid plate

Design to reduce mud and debris ingress
Compatible with simultaneous use of X-Power (ignition crankcase and clutch protection)
Protection of the side crankcases, on the water pump and in the frame areas around the footrests
It is easily mounted by using the frame cross-member near the single shock absorber and by means of two supplied screws using the two original slots at the front
Two-tone logo plate
Weight: 700g

PRODUCT DETAILS

98% Polypropylene | 2% Others

Made In: Italy

APPLICATIONS

GAS GAS MC 125 2024 | HUSQVARNA TC 125 2023 2024 | HUSQVARNA TE 150 2024 | KTM SX 125 2023 2024 | KTM XC 125 2023 2024

SIZES

16

SKID PLATE
297944



297944-12



297944-62



297944-

FEATURES

Latest generation skid plate with integrated fin
Fin designed to protect the shock absorber linkage from impacts, mud and sand. It allows easy sliding over natural obstacles (whoops, stones, logs) ensuring a smooth ride. Design ensures maximum linkage grip
Offers maximum protection for the chassis and engine.
Extended protection areas on the side casings, water pump and footpeg areas of the frame

Presence of exhaust areas to give more lightness, ventilation and facilitate washing inside the skid plate
Design to reduce mud and debris ingress
Compatible with simultaneous use of Acerbis X-Power (Ignition and clutch cover protection)
Easily mounted using the four original holes in the frame
Two-tone logo plate
Weight: 700g

PRODUCT DETAILS

98% Polypropylene | 2% Other

Made In: Italy

APPLICATIONS

GAS GAS EC 450 F 2024 | GAS GAS EC 500 F 2024 | GAS GAS EX 450 F 2024 | GAS GAS MC 450 F 2024 | HUSQVARNA FC 450 2023 2024 | HUSQVARNA FE 450 2024 | HUSQVARNA FE 501 2024 | HUSQVARNA FE 501 S 2024 | HUSQVARNA FE 501 W 2024 | HUSQVARNA FX 450 2023 2024 | KTM SX-F 450 2023 2024 | KTM XC-F 450 2023 2024

SIZES

SKID PLATE FOR
KTM/HUSQVARNA/GAS
GAS
297761



297761-



297761-62



297761-12

FEATURES

CONSTRUCTION AND DESIGN:

Design designed for optimal protection of the chassis and motor.
Fin designed to protect the shock absorber linkage from impacts, mud and sand. It allows you to easily slide over natural obstacles (Whoops, stones, logs) ensuring a smooth ride. The design ensures maximum adherence to the link
Impact resistant material effectively protects against stones, earth and mud.
Flexible and lightweight plastic reduces vibration and surface damage to chassis and engine
The air intakes are designed to give more lightness, aeration and facilitate the washing operations inside the sub-engine, reducing the entrance of gravel, earth and mud.

Exploiting the original attacks of the bike the assembly/ disassembly is intuitive and to facilitate the normal maintenance and washing of the engine.

Extended protection areas on the side housings, on the water pump and in the chassis areas

Compatible with simultaneous use of X-Power (Ignition and clutch housing protection)

PRODUCT DETAILS

Nyoln 96% | Others 4%

Made In: Italy

APPLICATIONS

GAS GAS EC 250 F 2024 | GAS GAS EC 350 F 2024 | GAS GAS EX 250 F 2024 | GAS GAS EX 350 F 2024 | GAS GAS MC 250 F 2024 | GAS GAS MC 350 F 2024 | HUSQVARNA FC 250 2023 2024 | HUSQVARNA FC 350 2023 2024 | HUSQVARNA FE 250 2024 | HUSQVARNA FE 350 2024 | HUSQVARNA FE 350 PRO 2024 | HUSQVARNA FE 350 S 2024 | HUSQVARNA FE 350 W 2024 | HUSQVARNA FX 350 2023 2024 | KTM SX-F 250 2023 2024 | KTM SX-F 350 2023 2024 | KTM XC-F 250 2023 2024 | KTM XC-F 350 2023 2024

SIZES

16

SKID PLATE FOR KTM 279168



279168-



279168-237



279168-



279168-315

FEATURES

Last generation skid plate with built-in fin
Printed fin designed to protect the suspension link from impacts, mud and sand. It allows the bike to easily slide over natural obstacles (whoops, rocks, trunks) Its design ensures the best cover around the link, thus guaranteeing a clean ride
Plastic 6mm thick for the best frame and engine protection
Protection areas extended over the engine covers, on the water pump and on the foot peg mounts

Discharge areas to improve lightness and airflow and to ease the cleaning process behind the skid plate
Design developed to reduce the presence of mud and debris around the engine
Possibility to combine its use with X-POWER (clutch and ignition cover protection)
Carbon look refinishing
Easy mounting on the original fastenings of the bike

PRODUCT DETAILS

Skid plate realised in two joined sections: | Highly impact-resistant plastic skid plate | Fin for suspension link protection: blend rubber + plastic which allows resistance to impacts and better elasticity

Made In: Italy

APPLICATIONS

HUSQVARNA FC 250 2019 2020 2021 2022 | HUSQVARNA FC 350 2019 2020 2021 2022 | HUSQVARNA FX 350 2020 2021 2022 | KTM SX-F 250 2019 2020 2021 2022 | KTM SX-F 350 2019 2020 2021 2022 | KTM XC-F 250 2019 2020 2021 2022 | KTM XC-F 350 2019 2020 2021 2022

SKID PLATE FOR KTM
279164



279164-203



279164-

APPLICATIONS

KTM EXC-F 450 2020 2021 2022 2023 | KTM EXC-F 500 2020 2021 2022 2023 | KTM XCF-W 450 2023 | KTM XCF-W 500 2020 2021 2022 2023

SKID PLATE FOR KTM
279163



279163-22



279163-12

APPLICATIONS

KTM EXC-F 250 2020 2021 2022 2023 | KTM EXC-F 350 2020 2021 2022 2023 | KTM XCF-W 350 2020 2021 2022 2023

SKID PLATE FOR KTM
278057



278057-22



278057-12

APPLICATIONS

KTM EXC 250 TPI 2020 2021 2022 2023 | KTM EXC 300 TPI 2020 2021 2022 2023 | KTM XC-W 250 TPI 2020 2021 2022 2023 | KTM XC-W 300 TPI 2020 2021 2022 2023

SKID PLATE FOR
KTM/HUSQVARNA/GAS
GAS
273636



273636-



273636-237



273636-



273636-315

FEATURES

Last generation skid plate with built-in fin
Printed fin designed to protect the suspension link from impacts, mud and sand. It allows the bike to easily slide over natural obstacles (whoops, rocks, trunks) Its design ensures the best cover around the link, thus guaranteeing a clean ride
Plastic 6mm thick for the best frame and engine protection
Protection areas extended over the engine covers, on the water pump and on the foot peg mounts

Discharge areas to improve lightness and airflow and to ease the cleaning process behind the skid plate
Design developed to reduce the presence of mud and debris around the engine
Possibility to combine its use with X-POWER (clutch and ignition cover protection)
Carbon look refinishing
Easy mounting on the original fastenings of the bike

PRODUCT DETAILS

Skid plate realised in two joined sections: | Highly impact-resistant plastic skid plate | Fin for suspension link protection: blend rubber + plastic which allows resistance to impacts and better elasticity

Made In: Italy

APPLICATIONS

GAS GAS EX 250 2022 2023 | GAS GAS EX 300 2021 2022 2023 | GAS GAS MC 250 2022 2023 | HUSQVARNA TC 250 2019 2020 2021 2022 | HUSQVARNA TX 300 2020 2021 2022 | KTM SX 250 2019 2020 2021 2022 | KTM XC 250 2019 2023 2024 | KTM XC 250 TPI 2020 2021 2022 | KTM XC 300 2019 | KTM XC 300 TPI 2020 2021 2022

**SKID PLATE FOR
KTM/HUSQVARNA/GAS
GAS
273346**



273346-203



273346-232



273346-



273346-315

APPLICATIONS

GAS GAS EX 450 F 2021 2022 2023 | GAS GAS MC 450 F 2021 2022 2023 | HUSQVARNA FC 450 2019 2020 2021 2022 | HUSQVARNA FX 450 2020 2021 2022 | KTM SX-F 450 2019 2020 2021 2022 | KTM XC-F 450 2019 2020 2021 2022

**SKID PLATE FOR
KTM/HUSQVARNA/GAS
GAS
268603**



268603-



268603-42



268603-12

APPLICATIONS

GAS GAS MC 85 2021 2022 2023 2024 | HUSQVARNA TC 85 2018 2019 2020 2021 2022 2023 2024 | KTM SX 85 2018 2019 2020 2021 2022 2023 2024

**SKID PLATE FOR
KTM/HUSQVARNA
268879**



268879-12



268879-42

APPLICATIONS

HUSQVARNA FE 250 2017 2018 2019 | HUSQVARNA FE 350 2017 2018 2019 | KTM EXC-F 250 2017 2018 2019 | KTM EXC-F 350 2017 2018 2019

**SKID PLATE FOR
KTM/HUSQVARNA**
263056



263056-12

APPLICATIONS

HUSQVARNA TC 250 2017 2018 | KTM SX 250 2017 2018

**SKID PLATE FOR
KTM/HUSQVARNA**
263054



263054-42



263054-12

APPLICATIONS

HUSQVARNA TC 85 2014 2015 2016 2017 | KTM SX 85 2013 2014 2015 2016 2017

**SKID PLATE FOR
KTM/HUSQVARNA/GAS
GAS
263057**



263057-12

APPLICATIONS

GAS GAS MC 125 2021 2022 2023 | HUSQVARNA TC 125 2016 2017 2018 2019 2020 2021 2022 | HUSQVARNA TE 150I 2020 2021 2022 2023 | HUSQVARNA TX 125 2017 2018 2019 | KTM EXC 150 TPI 2020 2021 2022 2023 | KTM SX 125 2016 2017 2018 2019 2020 2021 2022 | KTM SX 150 2016 2017 2018 2019 2020 | KTM XC 125 2020 2021 2022 | KTM XC-W 125 2017 2018 2019 | KTM XC-W 150 TPI 2019 2020 2021 2022 2023

**SKID PLATE FOR
KTM/HUSQVARNA
263058**



263058-



263058-42



263058-12

APPLICATIONS

HUSQVARNA TE 250 2017 | HUSQVARNA TE 250I 2018 2019 | HUSQVARNA TE 300 2017 | HUSQVARNA TE 300I 2018 2019 | KTM EXC 250 2017
| KTM EXC 250 TPI 2018 2019 | KTM EXC 300 2017 | KTM EXC 300 TPI 2018 2019 | KTM XC-W 250 TPI 2019 | KTM XC-W 300 TPI 2019

SKID PLATE FOR KTM
263059



263059-



263059-12

APPLICATIONS

KTM EXC-F 450 2017 2018 2019 | KTM EXC-F 500 2017 2018 2019

**SKID PLATE FOR
KTM/HUSQVARNA
244942**



244942-



244942-12



244942-



244942-232

APPLICATIONS

HUSQVARNA FC 450 2016 2017 2018 | HUSQVARNA FE 450 2017 2018 2019 | HUSQVARNA FE 501 2017 2018 2019 | KTM SX-F 450 2016 2017 2018

**SKID PLATE FOR
KTM/HUSQVARNA
242116**



242116-



242116-42



242116-12

APPLICATIONS

HUSQVARNA FC 250 2016 2017 2018 | HUSQVARNA FC 350 2016 2017 2018 | KTM SX-F 250 2016 2017 2018 | KTM SX-F 350 2016 2017 2018

**SKID PLATE FOR
KTM/HUSQVARNA**
225029



225029-22

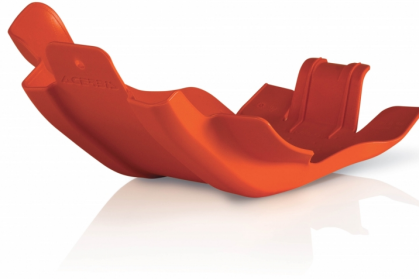


225029-12

APPLICATIONS

HUSQVARNA FC 450 2014 2015 | HUSQVARNA FE 450 2014 2015 2016 | HUSQVARNA FE 501 2014 2015 2016 | KTM EXC-F 450 2012 2013 2014 2015 2016 | KTM EXC-F 500 2012 2013 2014 2015 2016 | KTM SX-F 450 2013 2014 2015

**SKID PLATE FOR
KTM/HUSQVARNA
225027**



225027-22



225027-12

APPLICATIONS

HUSQVARNA FE 250 2014 2015 2016 | HUSQVARNA FE 350 2014 2015 2016 | KTM EXC-F 250 2014 2015 2016 | KTM EXC-F 350 2012 2013 2014 2015 2016

**SKID PLATE FOR
KTM/HUSQVARNA**
224413



224413-12

APPLICATIONS

HUSQVARNA TC 125 2014 2015 | HUSQVARNA TE 125 2014 2015 2016 | KTM EXC 125 2012 2013 2014 2015 2016 | KTM EXC 200 2012 2013 2014 2015 2016 | KTM SX 125 2011 2012 2013 2014 2015 | KTM SX 150 2011 2012 2013 2014 2015

**SKID PLATE FOR
KTM/HUSQVARNA**
221504



221504-22

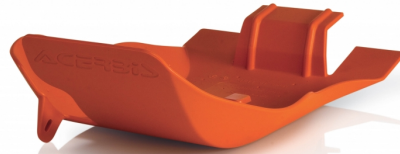


221504-12

APPLICATIONS

HUSQVARNA FC 250 2014 2015 | HUSQVARNA FC 350 2014 2015 | KTM SX-F 250 2013 2014 2015 | KTM SX-F 350 2011 2012 2013 2014 2015

**SKID PLATE FOR
KTM/HUSQVARNA
216023**



216023-22



216023-12

APPLICATIONS

HUSQVARNA TC 250 2014 2015 2016 | HUSQVARNA TE 250 2014 2015 2016 | HUSQVARNA TE 300 2014 2015 2016 | KTM EXC 250 2006 2007 2008 2009 2010 2011 2012 2013 2014 2015 2016 | KTM EXC 300 2006 2007 2008 2009 2010 2011 2012 2013 2014 2015 2016 | KTM SX 250 2006 2007 2008 2009 2010 2011 2012 2013 2014 2015 2016

SKID PLATE FOR KTM
212566



212566-12

APPLICATIONS

KTM EXC-F 450 2008 2009 2010 2011 | KTM EXC-F 500 2008 2009 2010 2011



SKID PLATE FOR YAMAHA 298549



298549-12



298549-62

FEATURES

Next-generation skid plate developed to provide maximum protection of the areas of greatest impact.
Allows smooth sliding over obstacles found on motocross tracks (whoops, boulders) ensuring a smooth ride.
Extended protection areas on the side crankcases, water pump and footpeg area

Presence of exhaust areas to give more lightness, aeration and facilitate washing operations inside the skid plate
Designed to reduce the entry of mud and debris
Weight: 900g

PRODUCT DETAILS

96% Plastic | 4% Steel

Made In: Italy

APPLICATIONS

YAMAHA YZ 250 F 2024

SKID PLATE FOR YAMAHA 298250



298250-62



298250-12

FEATURES

Latest generation skid plate with integrated fin
Fin designed to protect the linkage of the shock from impacts, mud and sand. It allows you to easily slide over natural obstacles (Whoops, stones, logs) ensuring a smooth ride. The design ensures maximum adherence to the link
It offers maximum protection to the chassis and motor.
Extended protection areas on the side housings, on the water pump and in the chassis areas
Presence of exhaust areas to give more lightness, ventilation and facilitate the washing operations inside the skid plate

Design designed to reduce the ingress of mud and debris
Possibility to combine its use with Acerbis X-Power (clutch and ignition cover protection)
Protection of the side housings, on the water pump and in the areas of the chassis
Easily mounts by taking advantage of 2 original holes and an integrated bracket that hugs the frame, making it stable and sturdy mounting
Two-tone label with logo.

APPLICATIONS

FANTIC XXF 450 2024 | YAMAHA WR 450 F 2024 | YAMAHA YZ 450 F 2023 2024 | YAMAHA YZ 450 FX 2024

SKID PLATE FOR TENERE 700 297616



297616-12

FEATURES

CONSTRUCTION AND DESIGN:

Next generation sub-engine made with high strength plastic with integrated fin

Fin designed to protect the shock absorber linkage from impacts, mud and sand. It allows you to slide easily on natural obstacles ensuring a smooth ride. The design ensures maximum adherence to the link

Impact resistant material effectively protects against stones, earth and mud.

Flexible and lightweight plastic reduces vibration and surface damage to chassis and engine

The air intakes are designed to give more lightness, aeration and facilitate the washing operations inside the sub-engine, reducing the entrance of gravel, earth and mud.

Using the original bindings of the bike the assembly/ disassembly is intuitive to facilitate the normal maintenance and washing of the engine.

Extended protection areas on the side housings, on the water pump and in the chassis areas

Compatible with simultaneous use of X-Power (Protection crankcase ignition and clutch)

PRODUCT DETAILS

Nylon 96% | Others 4%

Made In: Italy

APPLICATIONS

YAMAHA TENERE 700 2019 2020 2021 2022 2023 2024 | YAMAHA TENERE 700 EXPLORE EDITIO 2023 2024 | YAMAHA TENERE 700 EXTREME EDITIO 2023 2024 | YAMAHA TENERE 700 RALLY EDITION 2020 2021 2022 2023 2024

PRODUCTS RELATED



291147
FUEL TANKS FOR TENERE 700
23L

- 090.700 ■ 110.700
- 120.700



297617
X-POWER YAMAHA FOR
TENERE 700

- 090



291146
X-GRIP FRAME PROTECTOR
FOR YAMAHA

- 090 ■ 314
- 316 ■ 323



297615
TEKETMAGNET SWING ARM
FOR TENERE 700

- 090



HANDGUARDS ARGON YAM
TT700/T900

- 030 ■ 090
- 209 ■ 237
- 251 ■ 293
- 349

SKID PLATE FOR
YAMAHA TENERE 700
291149



291149-12

FEATURES

CONSTRUCTION AND DESIGN:

Latest generation sub-engine made of high-strength plastic with integrated fin and aluminum stone-guard plate

Fin designed to protect the shock absorber linkage from impacts, mud and sand, it allows you to slide easily over natural obstacles (whoops, stones, logs) ensuring a smooth ride. The design ensures maximum adherence to the link

8 mm thickness for maximum frame and engine protection

Design studied to reduce the entry of mud and debris into the engine
Using the supplied brackets and taking advantage of the original motorcycle attachments, it is possible to easily attach the under-engine

PRODUCT DETAILS

NYLON 72% | Steel 16% | Aluminium 12%

Made In: Italy

APPLICATIONS

YAMAHA TENERE 700 2019 2020

**SKID PLATE FOR
YAMAHA
278060**



278060-237



278060-315



278060-245

APPLICATIONS

FANTIC XE 125 2021 2022 2023 2024 | FANTIC XX 125 2021 2022 2023 2024 | YAMAHA YZ 125 2006 2007 2008 2009 2010 2011 2012 2013 2014 2015 2016 2017 2018 2019 2020 2021 2022 2023 2024

SKID PLATE FOR
YAMAHA
269069



269069-42



269069-62



269069-12

APPLICATIONS

FANTIC XEF 250 2021 2022 2023 2024 | FANTIC XEF 310 2024 | FANTIC XEF 450 2021 2022 2023 2024 | FANTIC XXF 250 2021 2022 2023 2024 | YAMAHA WR 250 F 2020 2021 2022 2023 2024 | YAMAHA WR 450 F 2019 2020 2021 2022 2023 | YAMAHA YZ 250 F 2019 2020 2021 2022 2023 | YAMAHA YZ 250 FX 2019 2020 2021 2022 2023 2024 | YAMAHA YZ 450 F 2018 2019 2020 2021 2022 | YAMAHA YZ 450 FX 2019 2020 2021 2022

PRODUCTS RELATED



273635
FULL PLASTIC KIT FOR
YAMAHA

- | | |
|-----------|-----------|
| □ 030 | ■ 040 |
| ■ 041 | ■ 070 |
| ■ 072 | ■ 083 |
| ■ 090 | ■ 092 |
| ■ 132 | ■ 252 |
| ■ 316 | ■ 553 |
| ■ 553.021 | ■ 553.023 |
| ■ 714 | |



297959
FULL PLASTIC KIT FOR
YAMAHA

- | | |
|-------|-------|
| □ 030 | ■ 040 |
| ■ 090 | ■ 252 |
| ■ 316 | ■ 322 |
| ■ 336 | ■ 553 |
| ■ 714 | |

**SKID PLATE FOR
YAMAHA**
244971



244971-62



244971-12

APPLICATIONS

FANTIC XE 300 2024 | FANTIC XX 250 2021 2022 2023 2024 | YAMAHA YZ 250 2005 2006 2007 2008 2009 2010 2011 2012 2013 2014 2015 2016 2017 2018 2019 2020 2021 2022 2023 2024

**SKID PLATE FOR
YAMAHA**
237423



237423-12

APPLICATIONS

YAMAHA YZ 250 F 2014 2015 2016 2017 2018 | YAMAHA YZ 450 F 2014 2015 2016 2017

**SKID PLATE FOR
KAWASAKI/YAMAHA**
212568



212568-12

APPLICATIONS

KAWASAKI KLX 450 2008 2009 2010 2011 2012 2013 2014 2015 2016 2017 2018 | YAMAHA WR 250 F 2007 2008 2009 2010 2011 2012 2013 2014 2015 2016 2017 2018 2019 | YAMAHA WR 450 F 2007 2008 2009 2010 2011 2012 2013 2014 2015 2016 2017 2018

SKID PLATE
298145



298145-12



298145-



298145-62

FEATURES

Latest-generation skid plate with integrated fin
Co-moulded fin designed to protect the shock absorber linkage from impacts, mud and sand. It allows easy sliding over natural obstacles (whoops, stones, logs) ensuring a smooth ride. Design ensures maximum linkage grip
6mm thickness for maximum chassis and engine protection
Extended protection areas on the side casings, water pump and footpeg areas of the chassis
Presence of exhaust areas to give more lightness, ventilation and facilitate washing inside the skid plate

Design to reduce mud and debris ingress
Compatible with simultaneous use of X-Power (ignition crankcase and clutch protection)
Protection of the side crankcases, on the water pump and in the frame areas around the footrests
It is easily mounted by using the frame cross-member near the single shock absorber and by means of two supplied screws using the two original slots at the front
Two-tone logo plate
Weight: 700g

PRODUCT DETAILS

98% Polypropylene | 2% Others

Made In: Italy

APPLICATIONS

GAS GAS MC 125 2024 | HUSQVARNA TC 125 2023 2024 | HUSQVARNA TE 150 2024 | KTM SX 125 2023 2024 | KTM XC 125 2023 2024

SIZES

SKID PLATE FOR
KTM/HUSQVARNA/GAS
GAS
298146



298146-



298146-62



298146-12

FEATURES

Latest generation sub-engine with integrated fin
Co-molded fin designed to protect the shock absorber linkage from impact, mud and sand. Allows easy sliding over natural obstacles (whoops, stones, logs) ensuring a smooth ride.
Design ensures maximum grip on the link
6mm thickness for maximum frame and engine protection
Extended protection areas on the side crankcases, water pump, and in the areas of the frame footrest area
Presence of drainage areas to impart more lightness, aeration, and facilitate washing operations inside the sub-engine

Design studied to reduce the ingress of mud and debris
Compatible with simultaneous use of X-Power (Ignition and Clutch Crankcase Protection)
Protection of the side crankcases, on the water pump and in the areas of the frame footrest area
It is easily mounted by taking advantage of the frame sleeper near the mono-shock absorber and through two supplied screws that use the two original slots in the front
Possibility of simultaneous use with x-power
Two-tone nameplate with logo
Weight: 700g

PRODUCT DETAILS

98% Polypropylene | 2% Other

Made In: Italy

APPLICATIONS

GAS GAS EC 250 2024 | GAS GAS EC 300 2024 | GAS GAS EX 250 2024 | GAS GAS EX 300 2024 | GAS GAS MC 250 2024 | HUSQVARNA TC 250 2023 2024 | HUSQVARNA TE 250 2024 | HUSQVARNA TE 300 2024 | HUSQVARNA TE 300 PRO 2024 | HUSQVARNA TX 300 2023 2024 | KTM SX 250 2023 2024 | KTM SX 300 2023 2024 | KTM XC 250 2023 2024 | KTM XC 300 2023 2024

SIZES

SKID PLATES / HUSQVARNA
SKID PLATE FOR KTM/HUSQVARNA/GAS GAS



SKID PLATE FOR
KTM/HUSQVARNA/GAS
GAS
297761



297761-



297761-62



297761-12

FEATURES

CONSTRUCTION AND DESIGN:

Design designed for optimal protection of the chassis and motor.
Fin designed to protect the shock absorber linkage from impacts, mud and sand. It allows you to easily slide over natural obstacles (Whoops, stones, logs) ensuring a smooth ride. The design ensures maximum adherence to the link
Impact resistant material effectively protects against stones, earth and mud.
Flexible and lightweight plastic reduces vibration and surface damage to chassis and engine
The air intakes are designed to give more lightness, aeration and facilitate the washing operations inside the sub-engine, reducing the entrance of gravel, earth and mud.

Exploiting the original attacks of the bike the assembly/ disassembly is intuitive and to facilitate the normal maintenance and washing of the engine.

Extended protection areas on the side housings, on the water pump and in the chassis areas

Compatible with simultaneous use of X-Power (Ignition and clutch housing protection)

PRODUCT DETAILS

Nyoln 96% | Others 4%

Made In: Italy

APPLICATIONS

GAS GAS EC 250 F 2024 | GAS GAS EC 350 F 2024 | GAS GAS EX 250 F 2024 | GAS GAS EX 350 F 2024 | GAS GAS MC 250 F 2024 | GAS GAS MC 350 F 2024 | HUSQVARNA FC 250 2023 2024 | HUSQVARNA FC 350 2023 2024 | HUSQVARNA FE 250 2024 | HUSQVARNA FE 350 2024 | HUSQVARNA FE 350 PRO 2024 | HUSQVARNA FE 350 S 2024 | HUSQVARNA FE 350 W 2024 | HUSQVARNA FX 350 2023 2024 | KTM SX-F 250 2023 2024 | KTM SX-F 350 2023 2024 | KTM XC-F 250 2023 2024 | KTM XC-F 350 2023 2024

SIZES

16

SKID PLATE 297944



297944-12



297944-62



297944-

FEATURES

Latest generation skid plate with integrated fin
Fin designed to protect the shock absorber linkage from impacts, mud and sand. It allows easy sliding over natural obstacles (whoops, stones, logs) ensuring a smooth ride. Design ensures maximum linkage grip
Offers maximum protection for the chassis and engine.
Extended protection areas on the side casings, water pump and footpeg areas of the frame

Presence of exhaust areas to give more lightness, ventilation and facilitate washing inside the skid plate
Design to reduce mud and debris ingress
Compatible with simultaneous use of Acerbis X-Power (Ignition and clutch cover protection)
Easily mounted using the four original holes in the frame
Two-tone logo plate
Weight: 700g

PRODUCT DETAILS

98% Polypropylene | 2% Other

Made In: Italy

APPLICATIONS

GAS GAS EC 450 F 2024 | GAS GAS EC 500 F 2024 | GAS GAS EX 450 F 2024 | GAS GAS MC 450 F 2024 | HUSQVARNA FC 450 2023 2024 | HUSQVARNA FE 450 2024 | HUSQVARNA FE 501 2024 | HUSQVARNA FE 501 S 2024 | HUSQVARNA FE 501 W 2024 | HUSQVARNA FX 450 2023 2024 | KTM SX-F 450 2023 2024 | KTM XC-F 450 2023 2024

SIZES

**SKID PLATE FOR
HUSQVARNA/GAS GAS**
279165



279165-237



279165-315

APPLICATIONS

GAS GAS EC 250 F 2021 2022 2023 | GAS GAS EC 350 F 2021 2022 2023 | HUSQVARNA FE 250 2020 2021 2022 2023 | HUSQVARNA FE 350 2020 2021 2022 2023 | HUSQVARNA FE 350 S 2022 2023

**SKID PLATE FOR FOR
KTM/HUSQVARNA/GAS
GAS
279167**



279167-315



279167-237

APPLICATIONS

GAS GAS EC 250 2021 2022 2023 | GAS GAS EC 300 2021 2022 2023 | HUSQVARNA TE 250I 2020 2021 2022 2023 | HUSQVARNA TE 300I 2020 2021 2022 2023 | KTM XC-W 150 TPI 2020 2021 2022 2023

**SKID PLATE FOR
KTM/HUSQVARNA/GAS
GAS
273346**



273346-203



273346-232



273346-



273346-315

APPLICATIONS

GAS GAS EX 450 F 2021 2022 2023 | GAS GAS MC 450 F 2021 2022 2023 | HUSQVARNA FC 450 2019 2020 2021 2022 | HUSQVARNA FX 450 2020 2021 2022 | KTM SX-F 450 2019 2020 2021 2022 | KTM XC-F 450 2019 2020 2021 2022

SKID PLATE FOR
KTM/HUSQVARNA/GAS
GAS
273636



273636-



273636-237



273636-



273636-315

FEATURES

Last generation skid plate with built-in fin
Printed fin designed to protect the suspension link from impacts, mud and sand. It allows the bike to easily slide over natural obstacles (whoops, rocks, trunks) Its design ensures the best cover around the link, thus guaranteeing a clean ride
Plastic 6mm thick for the best frame and engine protection
Protection areas extended over the engine covers, on the water pump and on the foot peg mounts

Discharge areas to improve lightness and airflow and to ease the cleaning process behind the skid plate
Design developed to reduce the presence of mud and debris around the engine
Possibility to combine its use with X-POWER (clutch and ignition cover protection)
Carbon look refinishing
Easy mounting on the original fastenings of the bike

PRODUCT DETAILS

Skid plate realised in two joined sections: | Highly impact-resistant plastic skid plate | Fin for suspension link protection: blend rubber + plastic which allows resistance to impacts and better elasticity

Made In: Italy

APPLICATIONS

GAS GAS EX 250 2022 2023 | GAS GAS EX 300 2021 2022 2023 | GAS GAS MC 250 2022 2023 | HUSQVARNA TC 250 2019 2020 2021 2022 | HUSQVARNA TX 300 2020 2021 2022 | KTM SX 250 2019 2020 2021 2022 | KTM XC 250 2019 2023 2024 | KTM XC 250 TPI 2020 2021 2022 | KTM XC 300 2019 | KTM XC 300 TPI 2020 2021 2022

**SKID PLATE FOR
KTM/HUSQVARNA/GAS
GAS
263057**



263057-12

APPLICATIONS

GAS GAS MC 125 2021 2022 2023 | HUSQVARNA TC 125 2016 2017 2018 2019 2020 2021 2022 | HUSQVARNA TE 150I 2020 2021 2022 2023 | HUSQVARNA TX 125 2017 2018 2019 | KTM EXC 150 TPI 2020 2021 2022 2023 | KTM SX 125 2016 2017 2018 2019 2020 2021 2022 | KTM SX 150 2016 2017 2018 2019 2020 | KTM XC 125 2020 2021 2022 | KTM XC-W 125 2017 2018 2019 | KTM XC-W 150 TPI 2019 2020 2021 2022 2023

**SKID PLATE FOR
KTM/HUSQVARNA/GAS
GAS
268603**



268603-



268603-42



268603-12

APPLICATIONS

GAS GAS MC 85 2021 2022 2023 2024 | HUSQVARNA TC 85 2018 2019 2020 2021 2022 2023 2024 | KTM SX 85 2018 2019 2020 2021 2022 2023 2024

SKID PLATE FOR GAS GAS 273637



273637-



273637-237



273637-



273637-315

FEATURES

Last generation skid plate with built-in fin
Printed fin designed to protect the suspension link from impacts, mud and sand. It allows the bike to easily slide over natural obstacles (whoops, rocks, trunks) Its design ensures the best cover around the link, thus guaranteeing a clean ride
Plastic 6mm thick for the best frame and engine protection
Protection areas extended over the engine covers, on the water pump and on the foot peg mounts

Discharge areas to improve lightness and airflow and to ease the cleaning process behind the skid plate
Design developed to reduce the presence of mud and debris around the engine
Possibility to combine its use with X-POWER (clutch and ignition cover protection)
Carbon look refinishing
Easy mounting on the original fastenings of the bike

PRODUCT DETAILS

Skid plate realised in two joined sections: | Highly impact-resistant plastic skid plate | Fin for suspension link protection: blend rubber + plastic which allows resistance to impacts and better elasticity

Made In: Italy

APPLICATIONS

GAS GAS EX 250 F 2021 2022 2023 | GAS GAS EX 350 F 2021 2022 2023 | GAS GAS MC 250 F 2021 2022 2023 | GAS GAS MC 350 F 2022 2023